

8

7

6

5

4

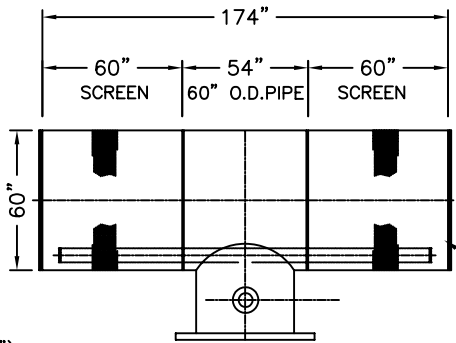
3

1

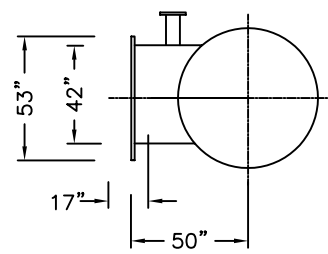
DWG. NO.	SH. REV.
07	A

REVISIONS		8-15-07	RAC
07	A	AMENDED TO REFLECT APPROPRIATE CAPACITY	

SHEET REVISION STATUS	
	SHEET NO.
	REV. LEVEL



6" ABSS PIPE
W/ANSI 150# RFSS FLANGE



CAPACITY: 26,036 GPM (58 CFS)
MEAN APPROACH VELOCITY: 0.37 FPS

SCREENS:
WIRE SIZE: 90 (0.09" x 0.156")
SLOT OPENING: 0.069"
FOA: 43.4%
WEIGHT: 2500 LBS

FLAT COVER PLATE (TYP)

NOTE:

1. MATERIAL : 304 SST, JACQUELYN COATED
2. 58 CFS CAPACITY EACH, TYPICAL OF 5

THIS DOCUMENT IS CONFIDENTIAL AND IS THE PROPERTY OF COOK LEGACY, INC. IT CONTAINS INFORMATION WHICH IS PROPRIETARY. IT SHALL NOT BE USED, DISCLOSED, DUPLICATED, REPRODUCED, OR TRANSFERRED WITHOUT PRIOR WRITTEN PERMISSION OF COOK LEGACY, INC.

THIS DRAWING SUPERSEDES ALL PRIOR CONTRACTUAL INFORMATION AND IS THE SOLE BASIS FOR PRODUCT DESCRIPTION. ONLY THOSE TOLERANCES AND ACCEPTANCE CRITERIA SPECIFICALLY DETAILED HEREIN SHALL APPLY UNLESS THIS DRAWING SPECIFICALLY REFERS TO OTHER CRITERIA. NO IMPLIED OR EXPRESS WARRANTY IS MADE OTHER THAN THOSE DETAILED HEREIN AND THE LIMITS OF REMEDY ARE ONLY THE REPLACEMENT OF THE PRODUCT F.O.B. SELLER.

QTY.	REQD.	SYM.	NOMENCLATURE OR DESCRIPTION	CODE IDENT.	PART OR IDENTIFYING NO.	SPECIFICATION	MATERIAL OR NOTE	ITEM NO.
UNLESS OTHERWISE SPECIFIED DIMENSIONS ARE IN INCHES			DRAWN BY JPM	8/8/07	COOK LEGACY INC. 2795 GREENROCK TRAIL ATLANTA, GEORGIA 30340			
FABRICATION			CHECKED RC	8/14/07	TITLE			
0 - 80 +/- 1/8"			ENG	-	TEE SCREEN SUBMITTAL DRAWING			
60 - 120 +/- 1/4"			APPROVED	-	FOR			
OVER 120 +/- 1/2"			ESTIMATED NET WEIGHT	-	CHELAN TAILRACE PUMP STATION			
MACHINING - DECIMALS			MATERIAL:	-	SCALE: 1:1			
2 - FLANGE +/- 0.05"			TDB	-	DWG. NO. T-01			
3 - FLANGE +/- 0.015"			FINISH:	-	REV A			
ANGLES +/- 0.2°			CONTRACT NO.	-	SHEET 1 OF 1			

D
C
B
A

C
C
E
A

8

7

6

5

4

3

2

1