



PUBLIC UTILITY DISTRICT NO. 1 of CHELAN COUNTY
P.O. Box 1231, Wenatchee, WA 98807-1231 • 327 N. Wenatchee Ave., Wenatchee, WA 98801
(509) 663-8121 • Toll free 1-888-663-8121 • www.chelanpud.org

November 6, 2007

VIA ELECTRONIC FILING

Honorable Kimberly D. Bose, Secretary
FEDERAL ENERGY REGULATORY COMMISSION
888 First Street, NE
Washington, DC 20426

Re: **Lake Chelan Hydroelectric Project No. 637-022**
Article 406 – Final Lake Chelan Wildlife Plan dated November 6, 2007

Dear Secretary Bose:

The Federal Energy Regulatory Commission (Commission) issued the “Order on Offer of Settlement and Issuing New License”¹ (License) and “Order on Rehearing”² for the Lake Chelan Hydroelectric Project (Project) on November 6, 2006, and April 19, 2007, respectively. License Article 406 requested the Public Utility District No. 1 of Chelan County, Washington (Chelan PUD or Licensee), to file the following plan for Commission approval.

- Article 406. *Lake Chelan Wildlife Plan.*

Within one year of the issuance date of the license, the licensee shall file for Commission approval, a Wildlife Habitat Plan for upland habitat improvements in the Lake Chelan basin, and riparian habitat improvements in the Lake Chelan basin. The plan shall be updated and filed for Commission approval, at a minimum, every five years thereafter. In addition to the funding measures set forth in Article 9, the plan shall contain the measures set forth below.

(a) *Upland Habitat Improvements.* The Wildlife Habitat Plan shall include a detailed description of the upland habitat improvement measures that will be implemented over the first five years of the license. The plan shall include: (1) a detailed description of the habitat improvement measures, including the methods to be used, (2) a detailed description of the location where the improvements will occur, including maps and drawings, (3) a description of any annual or periodic maintenance and monitoring

¹ 117 FERC ¶ 62,129

² 119 FERC ¶ 61,055

needed to ensure the success of the measures, and (4) a detailed implementation schedule. All lands requiring annual or periodic maintenance to ensure the success of the habitat improvements shall be brought into the project boundary and shown on the exhibit drawings filed pursuant to Article 301. The 90-day deadline for filing the revised exhibits stipulated in Article 301 shall be referenced to the completion date of the measures.

The plan shall also include provisions and a schedule for maintaining upland bird feeders, conducting annual winter mule deer and mountain goat surveys and bald eagle surveys, and reporting the results to the Washington Department of Fish and Wildlife. The annual wildlife surveys shall be conducted in coordination with the Washington Department of Fish and Wildlife and may be altered upon agreement with the Washington Department of Fish and Wildlife.

(b) *Riparian Habitat Improvements.* The Wildlife Habitat Plan shall include a detailed description of the measures for improving riparian habitats on lands in the project area, including: (1) a description of the lands subject to riparian habitat enhancements, (2) a detailed description of the measures to be implemented and any annual or periodic maintenance and monitoring required to ensure the success of the measures, and (3) a schedule for conducting the improvements. All lands requiring annual or periodic maintenance to ensure that the success of the habitat improvements shall be brought into the project boundary (if not already in the project boundary) and shown on the exhibit drawings filed pursuant to Article 301. The 90-day deadline for filing the revised exhibits stipulated in Article 301 shall be referenced to the completion date of the measures.

The plan shall include provisions for filing with the updated Wildlife Habitat Plan a summary of the upland habitat improvement measures and riparian habitat improvement measures implemented during the previous five years, as well as the measures proposed for the next five years. It shall also contain a summary of the results of the wildlife surveys and a report of any deviations from the approved wildlife survey protocols.

The Wildlife Habitat Plan shall be developed in consultation with the U.S. National Park Service (Park Service), U.S. Forest Service (Forest Service), U.S. Fish and Wildlife Service, Washington Department of Fish and Wildlife, Confederated Tribes of the Colville Reservation, the Yakama Nation, the Wenatchee Sportsman's Association, Lake Chelan Sportsman's Association, the NCW Mule Deer Foundation, the Foundation for North American Wild Sheep, the Audubon Society, and the National Wild Turkey Federation. The licensee shall include with the plan documentation of consultation, copies of recommendations on the completed plan after it has been prepared and provided to the above entities, and specific descriptions of how the entities' comments are accommodated by the plan. The licensee shall allow a minimum of 30 days for the entities to comment and to make recommendations before filing the plan with the Commission. If the licensee does not adopt a recommendation, the filing shall include the licensee's reasons, based on project-specific information.

*Ms. Kimberly D. Bose, Secretary
Federal Energy Regulatory Commission*

The Commission reserves the right to require changes to the plan. Upon Commission approval the licensee shall implement the plan, including any changes required by the Commission.

In accordance with the above License requirements, Chelan PUD hereby files the Final Lake Chelan Wildlife Plan dated November 6, 2007. Appendix A provides a record of consultation with the entities mentioned above during the development of the plan.

Please do not hesitate to contact me or Jeff Osborn (509-661-4176) of my office regarding any questions or comments regarding this plan.

Sincerely,



Michelle Smith
Licensing and Compliance Manager
michelle.smith@chelanpud.org
(509) 661-4180

cc: Erich Gaedeke, FERC-PRO

WILDLIFE HABITAT PLAN

LICENSE ARTICLE 406

Final

**LAKE CHELAN HYDROELECTRIC PROJECT
FERC Project No. 637**

November 6, 2007



**Public Utility District No. 1 of Chelan County
Wenatchee, Washington**

TABLE OF CONTENTS

EXECUTIVE SUMMARY 1

SECTION 1: INTRODUCTION 2

SECTION 2: UPLAND HABITAT IMPROVEMENTS 4

 2.1 Conservation Easement Acquisition4

 2.2 Funding for USDA Forest Service Upland Habitat Improvements7

 2.2.1 USDA Forest Service Habitat and Wildlife Enhancement: 2008-2011 ongoing projects/programs7

 2.2.2 USDA Forest Service Habitat and Wildlife Enhancement: 2008-2011 habitat improvement projects..8

 2.2.3 USDA Forest Service Noxious Weed Control..... 13

 2.3 Washington Department of Fish and Wildlife 13

SECTION 3: RIPARIAN HABITAT IMPROVEMENTS..... 15

 3.1 Funding for National Park Service Riparian Habitat Improvements 15

 3.2 Funding for USDA Forest Service Riparian Habitat Improvements 15

 3.3 Funding for Washington Department of Fish and Wildlife Habitat Improvements..... 16

SECTION 4: IMPLEMENTATION SCHEDULE..... 18

 Reporting..... 18

SECTION 5: FUNDING 19

 Chelan PUD and Agency Payment Agreement..... 19

SECTION 6: LITERATURE CITED 20

APPENDIX A: CONSULTATION WITH STAKEHOLDERS 21

 Lake Chelan Wildlife Forum Meeting Agendas and Minutes

 30 Day Comments

LIST OF FIGURES

Figure 1: Lake Chelan Hydroelectric Project Area..... 6

Figure 2: Lake Chelan Habitat Improvement Projects..... 10

EXECUTIVE SUMMARY

The Federal Energy Regulatory Commission (FERC) Order on Offer of Settlement and Issuing New License (License) and Order on Rehearing for the Lake Chelan Hydroelectric Project No. 637 (Project) were issued November 6, 2006, and April 19, 2007, respectively, to the Public Utility District No. 1 of Chelan County (Chelan PUD). Article 406 of the new Project License requires Chelan PUD to submit to FERC a Wildlife Habitat Plan by November 6, 2007. This plan describes the methods and schedule used to implement upland habitat improvements in the Lake Chelan basin, and riparian habitat improvements in the Lake Chelan basin, as specified in the License articles, and the Lake Chelan Comprehensive Settlement Agreement, October 8, 2003 (Settlement Agreement). Included in this plan are provisions for acquiring conservation easements and providing habitat enhancement on private lands on the north shore of Lake Chelan, upland habitat improvements for the USDA Forest Service and Washington Department of Fish and Wildlife (WDFW), noxious weed control, wildlife surveys, and riparian habitat improvements on USDA Forest Service and National Park Service (NPS) lands surrounding Lake Chelan.

SECTION 1: INTRODUCTION

License Article 406 requires Chelan PUD, within one year of the license issuance date, to file with FERC a Wildlife Habitat Plan (WHP) addressing both upland habitat improvements and riparian habitat improvements in the Lake Chelan basin.

Implementation of the WHP, as specified in Article 406 and Appendix A of the License, entails Chelan PUD providing funds for: 1) upland habitat improvements consisting of conservation easement acquisition, upland habitat improvements, noxious weed control; and 2) riparian habitat improvements. Additionally, Chelan PUD will conduct wildlife surveys in the Lake Chelan basin. Ordering Paragraphs (D) and (E) of the Project License both provide that Settlement Agreement Article 9 (WHP) is made part of the license.

As to upland habitat improvements, Article 406(a) provides that the plan shall include: (1) a detailed description of the habitat improvement measures, including the methods to be used, (2) a detailed description of the location where the improvements will occur, including maps and drawings, (3) a description of any annual or periodic maintenance and monitoring needed to ensure the success of the measures, and (4) a detailed implementation schedule. It goes on to require that all lands requiring annual or periodic maintenance to ensure the success of the habitat improvements be brought into the project boundary.

None of the upland habitat improvement measures require annual or periodic maintenance to ensure their success: therefore, no upland habitat lands need be brought into the project boundary. Section 2 of this WHP addresses the other three points identified in the previous paragraph by describing the habitat improvement measures and methods, the location where the improvements will occur, and providing an implementation schedule. However, the level of detail available at this time is somewhat limited due to, among other things, the dynamic nature of the Chelan basin environment (e.g., uncertainty regarding the location and extent of future wildfires) and the adaptive management practices to be used in implementing the measures contained in the plan. Further detail will become available as implementation progresses over the next few years, and will be provided in the updated version of this plan that Chelan PUD is required to submit to FERC within five years.

Similarly, as to riparian habitat improvements, Article 406(b) provides that the plan shall include: (1) a description of the lands subject to riparian habitat enhancements, (2) a detailed description of the measures to be implemented and any annual or periodic maintenance and monitoring required to ensure the success of the measures, and (3) a schedule for conducting the improvements. As with the upland habitat lands, no riparian lands need be brought into the project boundary because none of the riparian improvements require annual or periodic maintenance to ensure their success. Section 3 of this plan addresses the other points regarding riparian habitat improvements, subject to the same practical limitations regarding the level of detail available at this time.

The WHP was developed in consultation with the Lake Chelan Wildlife Forum (LCWF), which includes the National Park Service, USDA Forest Service, U.S. Fish and Wildlife Service, Washington Department of Fish and Wildlife, Confederated Tribes of the Colville Reservation,

Yakama, Nation, Wenatchee Sportsman's Association, Lake Chelan Sportsman's Association, NCW Mule Deer Foundation, Foundation for North American Wildlife Sheep, Audubon Society, and National Wild Turkey Federation. Documentation of the consultation that occurred during development of this plan is attached as Appendix A.

The WHP supersedes and is a revised version of Chapter 9: Wildlife Habitat Plan of the Lake Chelan Comprehensive Plan that was submitted as part of the Lake Chelan Settlement Agreement. Revisions include a rewrite of the WHP to: 1) provide the FERC with proposed actions, schedules, and methods; 2) provide the FERC with as much detail as possible regarding future plans for implementing license measures for Lake Chelan wildlife; and 3) to preserve the background and intent of the Settlement Agreement in order to guide the LCWF during the later years of license implementation.

Funds allocated under the WHP will be expended on resources that are most valuable to wildlife and most compatible with wildlife land use in Chelan County. Those lands will include key habitat types, migration corridors, and shrub steppe, grassland, and riparian/wetland habitats that offer restoration or improvement opportunities. The primary goal of the WHP is to enhance wildlife habitat within portions of Chelan County bordering Lake Chelan to:

- i) Restore, maintain, or improve ecological quality and diversity;
- ii) Restore, maintain, or increase habitat for key indicator wildlife species; and
- iii) Provide for public use compatible with the ecological quality, diversity, and carrying capacity for key wildlife species goals.

Primary wildlife indicator species for purposes of the WHP include: 1) mule deer and bighorn sheep; 2) threatened, endangered, sensitive, species of concern, or survey and management species; and 3) riparian and wetland indicator bird and amphibian species.

The WHP focuses primarily on big game species because the LCWF places a high value on protecting and enhancing habitat for species that overwinter in the Chelan Basin, which are mule deer, bighorn sheep, and mountain goats (Eldred, pers. com.). However, it was important to the LCWF that the same measures implemented for the benefit of big game also benefit a broad community of terrestrial wildlife, including avian species. Most of acreage surrounding Lake Chelan is shrub-steppe and riparian habitat; hence, the plan emphasizes enhancement projects for these types of habitats.

SECTION 2: UPLAND HABITAT IMPROVEMENTS

Implementation of upland habitat improvements, as specified in License Article 406 and Appendix A of the License, entails Chelan PUD providing funds for conservation easement acquisition, habitat improvements, and noxious weed control. Additionally, Chelan PUD will conduct wildlife surveys in the Lake Chelan basin. Ordering Paragraphs (D) and (E) of the Project License both provide that Settlement Article 9 (WHP) is made part of the license.

None of the upland habitat improvement measures described in this section require annual or periodic maintenance to ensure their success: therefore, no upland habitat lands need be brought into the project boundary.

2.1 Conservation Easement Acquisition

Appendix A of the Project License and Article 9 of the Settlement Agreement describe (FPA section 4(e)) for making funds available for acquiring conservation easements on private lands on the north shore of Lake Chelan.

(a) **Wildlife Habitat Restoration.** (1) Chelan PUD shall make available \$220,000 to the Chelan-Douglas Land Trust, for the acquisition of conservation easements in perpetuity on privately-owned lands located on the north shore of Lake Chelan (Figure 1). For purposes of this Chapter, all references to the Chelan-Douglas Land Trust refer to the Chelan-Douglas Land Trust or another organization selected pursuant to paragraph (a)(6) of Proposed License Article 9. The goal is to secure easements on 400 acres of land, and priority shall be given to easements on lands between elevations 1,100 and 1,400 ft.

(2) Chelan PUD shall make available additional funding of up to 15 percent of the cost of easement acquisition (not to exceed \$33,000) to the Chelan-Douglas Land Trust, for fees associated with easement acquisition. Associated fees include administrative costs, appraisals, baseline inventories, escrow fees, hazardous substance assessments, legal fees, recording fees, stewardship fees, surveys, and fees relating to title reports and insurance.

(3) Chelan PUD shall make available \$32,000 to the Chelan-Douglas Land Trust, for shrub-steppe/mule deer winter-range habitat restoration efforts on the lands, if any, for which an easement is acquired under paragraph (a)(1) of this subsection. Beyond making the \$32,000 available, Chelan PUD shall have no responsibility for the success of the restoration efforts to be carried out by the Chelan-Douglas Land Trust, in coordination with WDFW. In its contract with the Chelan-Douglas Land Trust, Chelan PUD shall require the Chelan-Douglas Land Trust to coordinate with WDFW in order to assure the highest likelihood of habitat restoration success.

Background for conservation easement acquisition

Winter is the most difficult season for resident wildlife survival in north central Washington. Because snow depth decreases with elevation, wildlife concentrate at lower elevations and lesser snow depth. The area of primary focus for acquisition of conservation easements on private lands is located on the north shore, Lower Basin Zone, between Gold Creek and Camas Creek (Figure

1.) at elevations between 1100 and 1400 ft MSL (i.e., from lake level to approximately 300 ft above). Information gathered from Chelan PUD wildlife surveys shows habitat in these areas to be critical to mule deer and big horn sheep overwinter survival and includes crucial big horn sheep lambing habitat. Wildlife surveys indicate that about 25 percent of mule deer observed during surveys congregate in this five mile reach of private ownership in severe winters. According to WDFW wildlife staff, securing conservation easements to prevent development on these lands, other than land close to the Lake Chelan shoreline, will protect lower elevation wildlife habitat that is contiguous with and additional to USDA Forest Service lands.

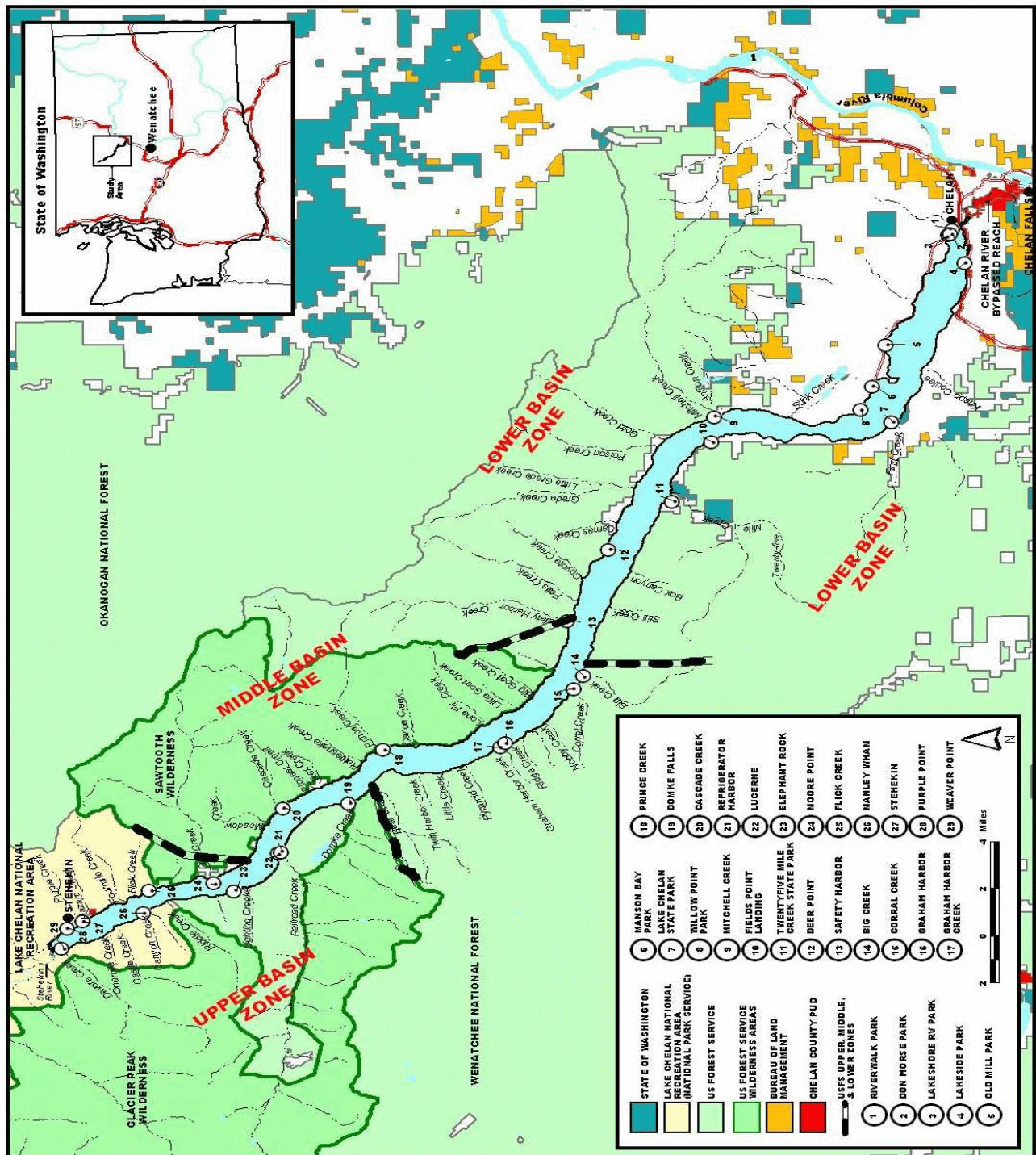


Figure 1: Lake Chelan Hydroelectric Project Area

2.2 Funding for USDA Forest Service Upland Habitat Improvements

Appendix A of the Project License and Article 9 of the Settlement Agreement describe Chelan PUD's requirement (FPA section 4(e)) for making funds available for USDA Forest Service habitat and wildlife enhancement measures:

(1) Within 180 days of the effective date of the New License, and by January 31st of each subsequent year, Chelan PUD shall make available to the USDA Forest Service \$20,000 per year during the term of the New License, and any subsequent annual licenses, for habitat and wildlife enhancement measures identified in section 3 of Chapter 9 of the Comprehensive Plan.

The following are USDA Forest Service upland habitat improvement projects planned to be implemented with that Chelan PUD funding.

Projects include native plant seed collection and propagation, thermal cover planting, habitat restoration through planting and thinning, and prescribed burning. Prescribed burning is a treatment method used extensively by the USDA Forest Service for forest restoration (USFS 2002), illustrated by projects described in section 2.2. Prescribed burning provides benefits to all species dependent on shrub steppe habitat by reducing the amount of available fuels and, therefore, the severity of summer wildfires. Prescribed burning also rejuvenates plant communities that have evolved with fire, thereby improving habitat conditions for all species dependent on shrub steppe and grassland habitats. Recent USDA Forest Service research has focused on the benefits to, and responses of, avian species from prescribed burns (Lyons et al. 2007; Gaines et al. 2007). Additionally, prescribed burning provides acceleration of a sustainable dry late-successional ponderosa pine forest and the species dependent on this type of forest such as pileated woodpeckers, marten, white-headed woodpeckers, pygmy nuthatch, Western gray squirrel and spotted owls.

2.2.1 USDA Forest Service Habitat and Wildlife Enhancement: 2008-2011 ongoing projects/programs

Native Plant/Seed Propagation and Increase Program. Initiate native seed collection and propagation for use in habitat improvement projects. Native seed to be collected and increased would include blue bunch wheatgrass, low elevation cedar, and perhaps yarrow and lupine. Estimate \$2000 in 2008 and \$1,000 per year thereafter to produce seed for 5-20 acres (cost effectiveness will increase as yields increase over time). Seeding native species to compete with non-native invasives will be essential mitigations to prescribed burning conducted for habitat improvement in some portions of the winter range, and in themselves, constitute an improvement in habitat by improving forage for wildlife. Project may be conducted in conjunction with propagation of native plants for PUD funded erosion control which could include shrubs and trees such as bitterbrush and dogwood.

2.2.2 USDA Forest Service Habitat and Wildlife Enhancement: 2008-2011 habitat improvement projects

The following projects are largely placed in order of project priority. However, due to the changing nature of our fire prone landscape, and the unpredictability of opportunities to partner these projects with both internal and external funding sources, the priority order of these projects is likely to change as conditions and circumstances warrant.

4th of July Mountain Winter Range Thermal Cover Planting – Approximately 110 acres on the north side of 4th of July Mountain burned with high severity in the 2002 Deer Point Fire, consuming a relatively dense stand of trees that had been planted after the 1968/70 fires (Figure 2.). The entire stand is located in mapped Key Winter Range and, prior to the Deer Point Fire, provided winter thermal cover for mule deer, as well as snow-intercept cover in some portions of the area. It is also located adjacent to a key riparian area at Antilon Lake that provides fawning habitat. As such the stand also has the potential to offer summer thermal cover, making this area one of very few areas in the lower north shore that can support deer year round. Estimated costs in 2006 dollars: \$24,000. Does not include costs for layout, and contract prep which have already been accounted for. This project is ready to go for 2008.

Lucerne Late-Successional Reserve Restoration - When the first draft of this plan was prepared, the Lucerne LSR (total of 8420 acres) was the only LSR on the Chelan Ranger District that had experienced high severity wildfire during the last 10 years, and had seen very little fire in the previous 99 years. However, on the evening of August 5, 2007, lightning ignited a fire that quickly spread to 50 acres, and is greater than 12,000 acres as of this writing. Prior to the fire, the USDA Forest Service was proposing to use habitat improvement funds to prepare 2 prescribed burn plans (for the Domke Mountain and Lightning Ridge areas) that could be used with either planned or natural ignition to implement low severity burning within the LSR to reduce accumulated fuels, and the risk of stand replacement fire. It was estimated that 95% of the LSR was at high risk of high severity wildfire and at high risk of ignition. The fire is currently burning with variable severity (due to relatively moderate fire weather) and retention of key late-successional elements such as large trees will depend on the severity of post burn insect attack.

Due to the uncertainty of the outcome of the fire, the USDA Forest Service is proposing at this time to use approximately \$20,000 to distribute anti-aggregant bark beetle pheromones (MCH) to reduce post-fire beetle attack, and improve the likelihood of retaining large diameter Douglas-fir within the fire area. The USDA Forest Service also proposes using some future funds to prepare burn plans for any unburned portions of the LSR (currently Lightning Ridge is unburned), and to prepare burn plans (at approximately \$5000 each) for the portion of the LSR that is within the fire area for burning within the next 5-10 years as post fire fuels begin to accumulate on the ground. Using prescribed fire at appropriate intervals to manage fuel accumulations will help retain remaining late-successional features of the area, encourage development of late-successional habitat features in the future, and return the area to a fire adapted, sustainable ecosystem.

Coyote Creek Prescribed Burning (Road-less winter range) – Complete prescribed burns planned in the North Shore Restoration CE including 2 lakeshore units on either side of Coyote Creek (695 acres up lake and 169 acres down lake). These 2 units are located in the unburned

strip between the Rex Creek and Deer Point Fires. In the six years since the last fire, grasses and shrubs in the adjacent burned areas have regenerated sufficiently to allow burning of these relatively small units without unduly impacting forage availability for mule deer or bighorn sheep. Both units would be accomplished using aerial ignition by helicopter at an average of \$46 per acre (2006 costs). Total estimated cost for both units would be \$39,744. Fewer acres may be burned (minimum 500 to maintain cost efficiency of helicopter operation) to remain within annual budget, and/or funds may be supplemented through natural fuels program. Prescribed burning benefits all species dependent on shrub steppe habitat by reducing fuels and, therefore, the severity of summer wildfires. Prescribed burning also rejuvenates plant communities that have evolved with fire, thereby improving habitat conditions for all species dependent on shrub steppe and grassland habitats on the North Shore.

Prescribed burning elsewhere on the North shore between Safety Harbor and Antilon Creek – A 5-10 year fire return cycle begins in 2007 (Deer Point Fire in 2002). This area supports road less and un-roaded winter range (11,650 acres). Many of the potential prescribed burn units in this area will require weed control. In some areas where weed infestations are determined to be lower, post-burn seeding may be sufficient to mitigate for noxious weed concerns. There are also some limited areas where noxious weeds are not present and implementation could begin as soon as the area is determined to be weed free. Cost per acre in 2006 dollars ranges from an average of \$46 per acre (500 acre minimum) for aerial ignition to approximately \$85 per acre for hand lighting. As with the Coyote Creek Prescribed Burning project described above, burning will improve habitat conditions for mule deer, bighorn sheep and other species dependent on shrub steppe and grassland habitats.

North 25 (Shady Pass Late-Successional Reserve) Restoration – High severity fire has burned almost entirely through the Chelan side of the Shady Pass LSR. Some areas, particularly in the North Fork of 25-Mile Creek, will require planting to accelerate reestablishment of a forest that can again support species dependent on late-successional habitats. Pre-commercial thinning in areas where seed sources are abundant or remnant “dog-hair” stands remain will also help accelerate development of late-successional habitat. Funds for planting and thinning are limited in availability through standard National Forest programs due to the non-commercial nature of this land allocation. The North 25 planning area is approximately 4140 acres, with approximately 100 acres of planting and 100 acres of thinning needs currently identified. Additionally, more and more acres each year are becoming ready for the reintroduction of fire (see also 25-Mile Creek key winter range prescribed burning). Trees for planting will be available as soon as 2008. Remaining needs are being assessed currently. Preliminary cost estimates for the first 200 acres of planting and thinning are approximately \$46,000. Additional acres may be identified and treated by partnering with Forest Service reforestation and/or watershed improvement funds if they become available. Acceleration of a sustainable dry late-successional forest would benefit many late-successional species known to occur in the area including pileated woodpeckers, marten, white-headed woodpeckers, and spotted owls.

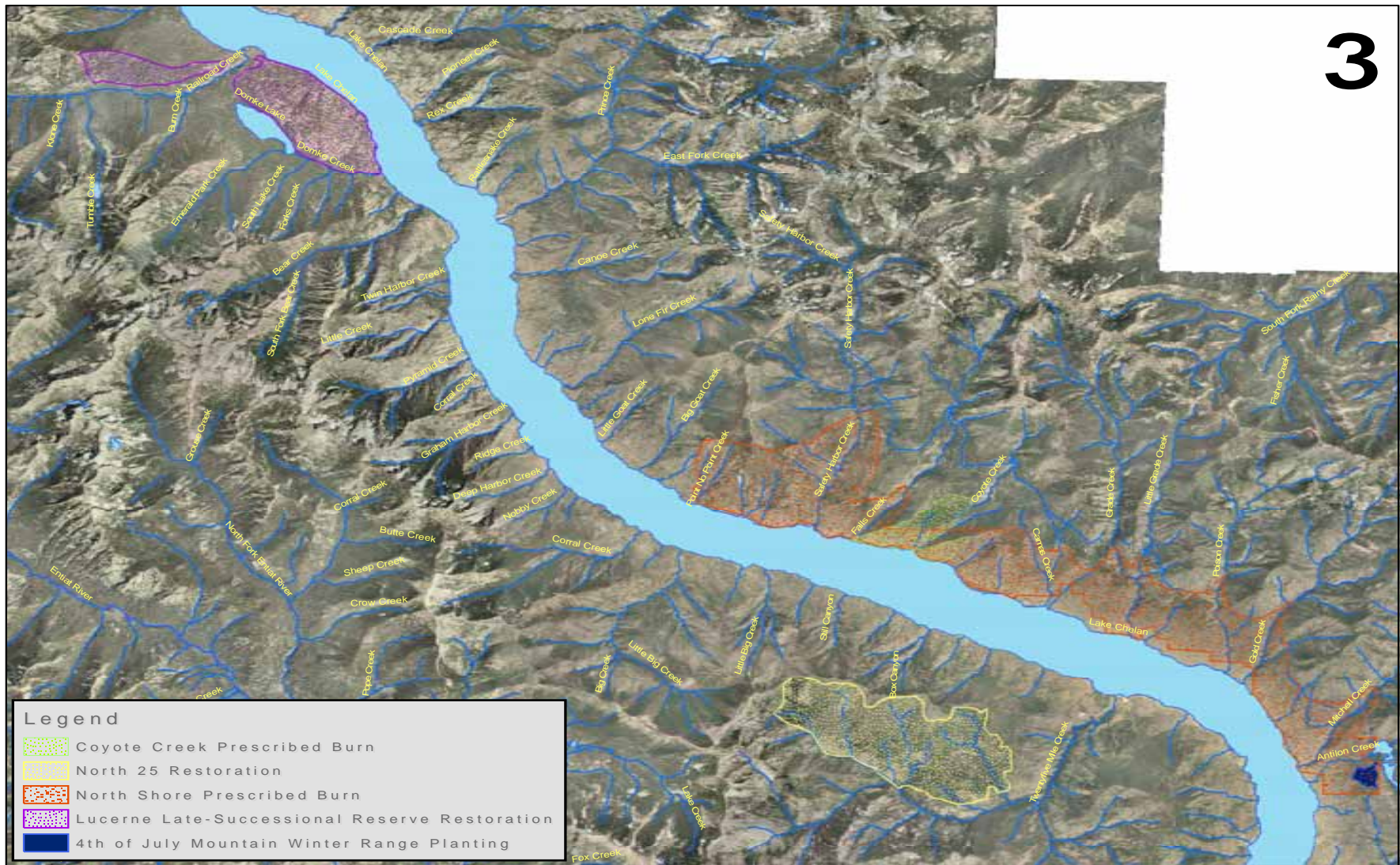


Figure 2: Lake Chelan Habitat Improvement Projects

Contingency Projects

The following list of projects are contingency projects that could be implemented, instead of those projects described previously in this section, as USDA Forest Service funding becomes available and/or priorities change in the future. However, these projects are not intended to be funded or implemented at the present time.

Bear Mountain Thinning – Key Winter Range – Thinning would be focused on reducing ladder fuels and reducing risk of losing snow-intercept/thermal cover to wildfire. Thinning would also speed development of larger trees and canopies, and reduce potential loss of thermal cover to insects and disease. Prescribed burning is not currently an option due to proximity to private residences. Winter range treatments would cover approximately 162 acres. Costs to thin, prune and pile are variable but range around \$250 - \$350 per acre, for a project total of \$40,500 - \$56,700, though costs could vary considerably due to size of material being removed (potential cost share with natural fuels and/or timber programs). Treatments would improve the condition and sustainability of thermal cover and snow intercept cover for mule deer, and would benefit all species dependent on mature to late-successional dry Douglas-fir and ponderosa pine forest.

25-Mile Creek Key Winter Range Prescribed burning – A 5 year fire return interval for this area following the 2004 Pot Peak and Deep Harbor Fires starts in 2009 for prescribed burning (approximately 2182 acres in the Box Canyon area and 454 acres in the Grouse Mountain area). Some limited areas did not burn in the 2004 and 1998 wildfires, or in prescribed burns conducted in the mid-late 1990s. These areas would be available for immediate prescribed burning implementation (700 acres in 2 potential burn units). These projects will likely involve some level of weed control mitigation. Costs are estimated at \$85 per acre for hand lighting and a total of \$29,750 each for the 2 units that remain unburned. Benefits are as described for other winter range improvement projects except that this area does not support bighorn sheep, and supports more mid to late successional ponderosa pine forest, and the species dependent on this type of forest (e.g. white-headed woodpecker, pygmy nuthatch, Western gray squirrel).

Antilon Lake – Remove old fences that are a hazard to wildlife (up to 1100 feet), enhance aspen stands, close roads (implement new USDA Forest Service travel management plan), and possible use of funds to rehabilitate riparian sites and locate new non-riparian recreation sites when Recreation Facilities Master Plan is completed. Implementation of this project will depend upon the completion of both the plans mentioned above.

Echo Ridge Forest Recovery – This 12,000 acre area continues to suffer the adverse effects of severe stand replacement fire. The severity of the fire removed most of the nutrients and organic matter in the soil, which has limited the establishment and growth of the young forest. Restoration activities include micro-site planting of conifers to establish seed sources in key areas, soil amendments to boost soils depleted by the severity of past fires, and pre-commercial thinning and burning activities to improve forest growth and reduce the risk of losing the recovering forests and additional soil nutrients to future wildfires. Restoration of the ponderosa pine and Douglas-fir dry forest in this area will improve habitat conditions for many key species of concern in the area, particularly those dependent on ponderosa pine ecosystems (e.g. white-headed woodpeckers and Western gray squirrels).

WhiteBark Pine Habitat Protection and Enhancement – Whitebark pine on the Chelan Ranger District has recently been under attack by the mountain pine beetle and blister rust. This high elevation habitat is extremely important to ecosystem function, and to several key species such as the Grizzly Bear. Research is currently underway to determine the effectiveness of aerial application of Verbenone, an anti-aggregant pheromone that causes mountain pine beetles to avoid treated areas. Application of Verbenone by helicopter to areas that would otherwise be inaccessible to treatment will protect an ecologically important tree species and the wildlife species dependent on it. Similar technology may also be used to treat late-successional Douglas fir stands with MCH (another naturally occurring anti-aggregant pheromone) following forest fires. Seed collection, propagation, and planting of blister resistant strains of whitebark pine are also potential enhancement measures that are planned in future years.

***Crupina* Control on wilderness winter range** – Continued *crupina* control and native grass seeding. Though this project is partially funded through the separate weed funds made available through the license, the intent of that funding was to address weed control in TES plant populations. *Crupina*, which is a Class A noxious weed that requires eradication, infests the majority of the winter range that lies within the Lake Chelan Sawtooth Wilderness. Eradication of this weed, and restoration of the native plant community, will result in restoration of a wilderness winter range for both mule deer and mountain goats. Winter range protected by wilderness status is extremely rare and valuable, as it has the capability of providing for ungulates as well as their predators, including threatened and endangered species such as the grizzly bear and gray wolf that require remote habitat conditions for security. Control and eventual eradication of this noxious weed population (the only known *crupina* infestation in the State of Washington) will protect the productivity and functionality of shrub steppe habitats throughout the Lake Chelan Basin, and the state. The project is currently partnered with the Washington Conservation Corp, the Washington State Department of Agriculture, various land owners, and various research entities. Funds may be used in any increment of \$8000 (the cost of 1 WCC crew per tour, or the cost of Forest Supervision and boat support per tour).

North Shore Winter Range Weed Control Program – Use of an integrated weed management (IWM) program to effectively reduce weed infestations on the north shore will require NEPA review to engage in herbicide application. The development of an IWM that includes herbicides is a precursor to initiation of any effective weed control projects on the winter range. Weed control is an essential mitigation to other habitat improvement activities such as prescribed burning. The USDA Forest Service may be able to cover this activity with new forest wide EA by end of first 5 year planning cycle, but funding the project through or in conjunction with the PUD habitat improvement funds will expedite effective weed control. Estimate \$20,000 for EA to treat weeds on all or a part of the north shore winter range (Planning area 11,971 acres). Weed control on winter range would benefit mule deer and big horn sheep, as well as carnivores dependent on these ungulates, and other species dependent on shrub steppe and grassland habitats.

Weed control for activities – On-going in all project areas, but may be stand alone projects in areas where prescribed burning is either not an option (e.g. near private land), or is not needed. Treatment areas will be determined during the environmental analysis process to develop an integrated weed management plan for the winter range.

2.2.3 USDA Forest Service Noxious Weed Control

Appendix A to the Project License and Article 9 of the Settlement Agreement describe Chelan PUD's requirement (FPA section 4(e)) for making funds available to the USDA Forest Service for noxious weed control:

(2) Within 180 days of the effective date of the New License, and by January 31st of each subsequent year, Chelan PUD shall make available to the USDA Forest Service \$5,000 per year for years one through three of the New License for noxious weed control at Threatened, Endangered, and Sensitive (TES) plant locations.

The following are USDA Forest Service noxious weed control projects planned to be implemented with those Chelan PUD funds.

2008-2011: Ongoing projects/programs

Weed Control: \$5000 for crew leadership and boat support in areas where *crupina* infests rare plant populations. Projects will begin in April 2008.

2.3 Washington Department of Fish and Wildlife

Appendix A to the Project License and Article 9 of the Settlement Agreement describe Chelan PUD's requirement (FPA section 4(e)) to conduct wildlife surveys:

(3) Chelan PUD, in coordination with WDFW, shall continue to conduct wildlife surveys similar to those conducted during the second FERC license for the Project, maintain upland bird feeders, and/or conduct habitat improvement projects for a cost not to exceed \$10,000 per year during the term of the New License, and any subsequent annual licenses. Chelan PUD shall provide an annual wildlife survey report to WDFW.

Methods and Background

Chelan PUD has been conducting big game surveys along Lake Chelan annually since the winter of 1982-83 (Fielder and McKay 1984). Each year, the results are documented in a Lake Chelan Big Game Status Report, which is provided to WDFW, the U.S. Fish and Wildlife Service (USFWS), USDA Forest Service, and the NPS.

During the winter of 2005-2006, Chelan PUD biologists surveyed the Lake Chelan shores for mule deer (*Odocoileus hemionus*), and mountain goats (*Oreamnos americanus*), as well as bighorn sheep (*Ovis canadensis*), coyotes (*Canus latrans*), bald eagles (*Haliaeetus leucocephalus*) and golden eagles (*Aquila chrysaetos*). A total of 12 surveys were conducted: 3 each in early winter (November 22-December 8); mid-winter (December 20-January 4); late winter (February 4-24), and early spring (March 14-29). A minimum of two people conducted the surveys from an open top, 21 foot boat. The boat was driven at a slow speed, usually within 100 yards of shore. The same area (Lake Chelan State Park to Stehekin) was observed each survey. The shores traveled on the up-lake and down-lake trips were alternated every survey to equalize morning and afternoon sighting opportunities along each shore. These same survey

methods will be employed during big game surveys conducted by Chelan PUD, unless otherwise recommended by the Lake Chelan Wildlife Forum (LCWF), during the term of the new license.

Based on recommendation from the LCWF, Chelan PUD will also include observations of all wildlife, such as waterfowl (ducks, grebes, etc.) and eagles (bald, golden), during winter surveys conducted along the lake shores and Stehekin area. The intent of the LCWF is to change the emphasis of the surveys from a winter big game survey to a more comprehensive winter wildlife survey on Lake Chelan. As provided in Article 406(a), Chelan PUD is coordinating wildlife surveys with WDFW and will be reporting annual results to WDFW.

As noted earlier, Article 406 (a)(2) requires a “detailed description of the location where improvements will occur, including maps and drawings...” In this case, Figure 2 provides as much detail as possible due to the fact that the location of controlled burns cannot be stated exactly at this time due to uncertainties regarding future natural fire events.

SECTION 3: RIPARIAN HABITAT IMPROVEMENTS

As specified in License Article 406 and Appendix A of the License, Chelan PUD will provide funds for riparian habitat improvements. Ordering Paragraphs (D) and (E) of the Project License both provide that Settlement Article 9 (WHP) is made part of the license.

None of the riparian habitat improvement measures described in this section require annual or periodic maintenance to ensure their success; therefore, no riparian habitat lands need be brought into the project boundary.

3.1 Funding for National Park Service Riparian Habitat Improvements

Appendix A of the Project License and Article 9(c) of the Settlement Agreement describe Chelan PUD requirement (FPA section 4(e)) for making funds available to the NPS for riparian habitat improvements:

(1) Within 180 days of the effective date of the New License, and by January 31st of each subsequent year, Chelan PUD shall make available to the NPS \$20,000 per year for the first five years of the New License, then \$10,000 per year for the remainder of the New License term, and any subsequent annual licenses, for Stehekin area habitat improvements.

(2) Within 180 days of the effective date of the New License, Chelan PUD shall make available:

(B) \$50,000 to the NPS to enhance riparian habitat in the Lake Chelan basin.

Many of the habitat improvements to be implemented on NPS land under Article 406(b) and Article 9(c) overlap and interrelate with measures to be implemented in the Stehekin area pursuant to Article 403 and Article 4. Consequently, to provide FERC with a single, complete picture regarding NPS-related measures, the NPS and Chelan PUD have agreed to combine the description of all such measures in the Stehekin Area Implementation Monitoring Plan.

3.2 Funding for USDA Forest Service Riparian Habitat Improvements

Appendix A of the Project License and Article 9(c) of the Settlement Agreement describe Chelan PUD requirement (FPA section 4(e)) for making funds available to the USDA Forest Service for riparian habitat improvements:

(2) Within 180 days of the effective date of the New License, Chelan PUD shall make available:

(A) \$50,000 to the USDA Forest Service to enhance riparian habitat in the Lake Chelan basin;

The following list includes activities within the Lake Chelan basin associated with riparian habitat enhancement for the USDA Forest Service:

- 510 cedar trees available for riparian planting, 2 days, 3 people - \$1600-\$2000. Will be accomplished in mid-elevation areas along streams as no seed has yet been collected from the low elevation, lakeshore areas.
- Seed for low elevation cedar will need to be collected in order to have seedlings available by 2009. Collection would occur in August or September. Planting in some mid-elevation zones will occur (approximately 510 trees) in 2007 as trees can not be held over.
- Low elevation cedar seed collection and propagation. 2 people plus boat and operator for 2-3 days, est. \$3000. Seed processing and management: \$500. Total 2007 cost: \$3500. Planned to begin in August and September 2008.
- Begin planting low elevation cedar. Likely to be able to plant 2-3 sites per day at a cost of approximately \$1000 per day including boat transportation. Costs will continue to accrue to continue cedar propagation. Additional species (cottonwood, dogwood, various shrubs, and ponderosa pine for lakeshore perching habitat) may be added as needs are identified.
- Continue propagation of cedar seed collected in 2007. May need additional seed collection if 2007 proves to be a poor seed production year. Identify areas for planting in 2009, and subsequent years. \$3500 for seed collection and processing. \$1500 for planting site identification. Total = \$5000.
- High grade woody debris stockpiled at Prince Creek from log boom flood debris. Identify and reserve structural material that may be used for future riparian habitat improvements. May involve barging excavator to site. Can be done in conjunction with identification and reserve of woody material that could be used for erosion work covered under Chapter 1 of the Lake Chelan Comprehensive Plan. Identify riparian habitats that may be improved with large woody debris.
- Move and place woody debris in areas identified above. Barge supported heavy equipment likely needed to move and place woody debris. May be completed in conjunction with PUD funded erosion repair near riparian sites, and costs will depend on contracts and share agreements.

As noted earlier, Article 406 (b)(2) requires a “description of the lands subject to riparian habitat enhancements ...” In this case, the proceeding list provides as much detail as possible due to the fact that the location of riparian enhancements cannot be stated exactly at this time due to future changes in environmental conditions.

3.3 Funding for Washington Department of Fish and Wildlife Habitat Improvements

Appendix A of the Project License and Article 9(c) of the Settlement Agreement describe Chelan PUD requirement (FPA section 4(e)) for making funds available to the WDFW for habitat improvements:

(c)(2) Within 180 days of the effective date of the New License, Chelan PUD shall make available:

(C) \$35,000 to the WDFW to enhance habitat in the Lake Chelan basin.

WDFW biological staff recommend reserving expenditure of these funds until after conservation easements are acquired. As noted in section 2.1, the area of primary focus for acquisition of conservation easements on private lands is located on the north shore, Lower Basin Zone,

between Gold Creek and Camas Creek (Figure 1.) at elevations between 1100 and 1400 ft MSL (i.e., from lake level to approximately 300 ft above). Once easements are acquired, funding from this source could be used to provide additional habitat restoration or enhancement activities on lands where easements are acquired, or for other habitat enhancements projects in the Chelan basin. Due to the uncertainty at this time of the precise location of lands where restoration efforts would be most valuable, WDFW desires that Chelan PUD retain this funding at this time until such time as specific habitat enhancement needs and projects are identified.

SECTION 4: IMPLEMENTATION SCHEDULE

Article 406 requires this plan to include a schedule for conducting improvements. Projects contained in this plan are placed in order of priority. However, due to the changing nature of our fire prone landscape, the unpredictability of opportunities to partner, projects having both internal and external funding sources, and the desire to implement projects with the greatest potential benefit to wildlife and habitats, the priority of these projects will change as conditions and circumstances warrant. Estimated dates of project implementation are included previously in project descriptions in sections 2 and 3 of this plan.

Reporting

Annual Report

As required by Article 406(a), Chelan PUD will provide an annual report of the results of winter wildlife surveys conducted under section 2.3 of this plan to WDFW by April 30 of each year. Additionally, Chelan PUD will provide the annual report of the results of winter wildlife surveys to the U.S. Fish and Wildlife Service (USFWS), USDA Forest Service, and the NPS.

Five Year Wildlife Habitat Plan Update

As required by Article 406(b), the Wildlife Habitat Plan shall be updated and filed for Commission approval, at a minimum, of every five years after approval of this plan. The updated plan shall include a summary of upland and riparian habitat improvement measures implemented during the previous five years and measures projected to be implemented in the next five years. The plan shall also contain a summary of the results of the wildlife surveys conducted for WDFW, the U.S. Fish and Wildlife Service (USFWS), USDA Forest Service, and the NPS.

SECTION 5: FUNDING

Chelan PUD and Agency Payment Agreement

All payments for work conducted by the USDA Forest Service, NPS, and WDFW will be in accordance with Section 19 of the Settlement Agreement. See Appendix B. Funding will be provided on a reimbursement basis within (90) ninety days of the Agency submitting a quarterly invoice/variance form and only after review and approval by Chelan PUD. As a condition of payment for any work performed under the Settlement Agreement, the USDA Forest Service, NPS, and WDFW must submit a certification that the work was performed in a manner consistent with the Settlement Agreement, as well as annual planning reports no later than January 31 of each year. The annual planning reports must document all work that was completed during the preceding year, and the actual cost of that work. In addition, they must contain a detailed description of the work to be undertaken in the current year, a general description of the work to be undertaken in the following year, and the estimated costs of that work. Planned and completed work provided by the USDA Forest Service, NPS, and WDFW will be summarized annually and included in an Annual Report submitted to the Commission by Chelan PUD.

SECTION 6: LITERATURE CITED

Eldred, T. E. 2007. Lake Chelan Wildlife Forum meeting, July 10, 2007.

Fielder, P.C. and C.E. McKay, Jr. 1984. Lake Chelan wildlife studies with emphasis on mountain goats and mule deer. Technical report of the Public Utility District No. 1 of Chelan County and the WA. Dept. of Game, Wenatchee, WA.

Gaines, W.L., M. Haggard, J. F. Lehmkuhl, A.L. Lyons, and R.J. Harrod. 2007. Short-term response of land birds to ponderosa pine restoration. In Press, *Journal of Restoration Ecology*.

Lyons, A.L., W.L. Gaines, J.F. Lehmkuhl, and R.J. Harrod. 2007. Short term effects of fire and fire surrogate treatments on foraging tree selection by cavity-nesting birds in dry forests of central Washington. In Review, *Forest Ecology and Management*.

USFS 2002. Okanogan and Wenatchee National Forests Fire Management Plan, Chapter III, Section E - Fire Regimes and Disturbance Processes, Resource Benefits (pages 16-52).

APPENDIX A: CONSULTATION WITH STAKEHOLDERS

Article 406 of the Project License requires that the Wildlife Habitat Plan (WHP):

“... be developed in consultation with the U.S. National Park Service (Park Service), U.S. Forest Service (Forest Service), U.S. Fish and Wildlife Service, Washington Department of Fish and Wildlife, Confederated Tribes of the Colville Reservation, Yakama Nation, the Wenatchee Sportsman’s Association, the Lake Chelan Sportsman’s Association, the NCW Mule Deer Foundation, the Foundation for North American Wild Sheep, the Audubon Society, and the National Wild Turkey Federation. The licensee shall include with the plan documentation of consultation, copies of recommendations on the completed plan after it has been prepared and provided to the above entities, and specific descriptions of how the entities’ comments are accommodated by the plan. The licensee shall allow a minimum of 30 days for the entities to comment and to make recommendations before filing the plan with the Commission. If the licensee does not adopt a recommendation, the filing shall include the licensee’s reasons, based on project-specific information.”

Chelan PUD has completed the consultation requirements, beginning January 30, 2007 by consulting with the Lake Chelan Wildlife Forum (LCWF) on the outline for the WHP. The LCWF met on the following dates in 2007 to develop the WHP: January 30, April 25, July 10, and August 29. The draft plan was provided to the members of the LCWF, listed below, on September 28, 2007 and comments were received through October 29, 2007. Agendas and meeting minutes for LCWF meetings are attached in the following section.

LCWF Membership List

Washington State Department of Fish and Wildlife
United States Department of Agriculture Forest Service
National Park Service
United States Fish and Wildlife Service
Confederated Tribes of the Colville Reservation (CCT)
Confederated Tribes of the Umatilla Indian Reservation (CTUIR)
Yakama Nation
Wenatchee Sportsman’s Association
Lake Chelan Sportsman’s Association
NCW Mule Deer Foundation
Foundation for North American Wild Sheep
Audubon Society
National Wild Turkey Federation.

Lake Chelan Wildlife Forum Meeting Agendas and Minutes

Lake Chelan Wildlife Forum (LCWF) Meeting

Date: January 30, 2007
 Time: 9:00 am – 12:00 noon
 Location: Chelan PUD Headquarters, Wenatchee, WA
 Engineering Services Library

Call in number: (509)661-4844, Password is 4000.

Meeting called by: Jeff Osborn,
Chelan PUD

Type of meeting: LCWF Meeting

Note taker: Tracy Dunning

LCWF Members

<u>Name</u>	<u>Agency</u>	<u>Phone</u>	<u>Email</u>
Tony Eldred	WDFW	509-662-0452	eldredte@dfw.wa.gov
Beau Patterson	WDFW	509-662-0452	pattebap@dfw.wa.gov
Carmen Andonaegui	WDFW	509-679-4159	andonca@dfw.wa.gov
Curt Leigh	WDFW	360-902-2422	leighcsl@dfw.wa.gov
Alex Martinez	USDA-FS	509-662-4335	ramartinez@fs.fed.us
Joe Kastenholz	USDA-FS	509-682-2576 x214	jkastenholz@fs.fed.us
Mallroy Lenz	USDA-FS	509-682-2577	mlenz01@fs.fed.us
Steve Lewis	USFWS	509-665-3508 x14	Stephen.Lewis@fws.gov
Von Pope	Chelan PUD	509-661-4625	von.pope@chelanpud.org
Jeff Osborn	Chelan PUD	509-661-4176	jeffa@chelanpud.org
Bob Kuntz	NPS	360-856-5700 x368	Robert.Kuntz@nps.gov
Jack Oelfke	NPS	360-856-5700 x376	Jack.Oelfke@nps.gov
Jerry Marco	CCT	509-634-2114	jerry.marco@colvilletribes.com
Mark Oswood	NCW Audubon	509-662-9087	info.@ncwaududon.org
Jon Soest	NCW Audubon	509-763-1030	jfs.seanet.com
Dan McKinley	Nat. Wild Turkey	509-448-5690	nwtdan@hotmail.com
Gary Denniston	LCSA	509-687-4078	geedee@cablespeed.com
Mike Montgomery	NCW Mule Deer	509-665-0524	
Glen Landrus	Found. Wild Sheep	509-243-4151	ramslam@hotmail.com
Ron Bruno	Wen. Sports. Assoc.	509-884-9639	ron.bruno@verizon.net

Meeting Purpose: First meeting of the Lake Chelan Wildlife Forum to initiate Lake Chelan license implementation

Agenda

<u>Task</u>	<u>Time</u>	<u>Discussion Lead</u>
Welcome and Introductions	9:00 to 9:10	Jeff Osborn
Review Lake Chelan Wildlife Forum ground rules, goals and objectives	9:10 to 9:45	Michelle Smith, Forum
Review License Order conditions <ul style="list-style-type: none"> Implementation plan outline review 	9:45 to 10:15	Jeff Osborn, Forum
Review Wildlife Project schedules	10:15 to 10:30	Janel Duffy, Forum
Discuss and provide input on Wildlife Habitat Plan development	10:30 to 11:45	NPS; USDA-FS; WDFW; Forum
Next Steps <ul style="list-style-type: none"> Review Action Items Schedule future LCWF meetings 	11:45 to 12:00	Jeff Osborn, Forum

Additional Information

Handouts: forum goals and objectives; project schedules; License documents (FERC License Order; Settlement Agreement; License articles; Comprehensive Plans); implementation plan outline.

Lake Chelan Wildlife Forum (LCWF) Meeting

Date: January 30, 2007
 Time: 9:00 am – 12:00 noon
 Location: Chelan PUD Headquarters, Wenatchee, WA
 Engineering Services Library

Call in number: (509)661-4844, Password is 4000.

Meeting called by: Jeff Osborn, Chelan PUD
 Type of meeting: LCWF Meeting
 Note taker: Tracy Dunning

LCWF Members

<u>Name</u>	<u>Agency</u>	<u>Phone</u>	<u>Email</u>
Tony Eldred	WDFW	509-662-0452	eldredte@dfw.wa.gov
Beau Patterson	WDFW	509-662-0452	pattebap@dfw.wa.gov
Carmen Andonaegui	WDFW	509-679-4159	andonca@dfw.wa.gov
Curt Leigh	WDFW	360-902-2422	leighcsl@dfw.wa.gov
Alex Martinez	USDA-FS	509-662-4335	ramartinez@fs.fed.us
Joe Kastenholz	USDA-FS	509-682-2576 x214	jkastenholz@fs.fed.us
Mallroy Lenz	USDA-FS	509-682-2577	mlenz01@fs.fed.us
Steve Lewis	USFWS	509-665-3508 x14	Stephen.Lewis@fws.gov
Von Pope	Chelan PUD	509-661-4625	von.pope@chelanpud.org
Jeff Osborn	Chelan PUD	509-661-4176	Jeff.Osborn@chelanpud.org
Bob Kuntz – via conference phone	NPS	360-856-5700 x368	Robert.Kuntz@nps.gov
Jack Oelfke	NPS	360-856-5700 x376	Jack.Oelfke@nps.gov
Jerry Marco	CCT	509-634-2114	jerry.marco@colvilletribes.com
Mark Oswood	NCW Audubon	509-662-9087	info.@ncwaududon.org
Jon Soest	NCW Audubon	509-763-1030	jfs.seanet.com
Dan McKinley	Nat. Wild Turkey	509-448-5690	nwtdan@hotmail.com
Gary Denniston	LCSA	509-687-4078	geedee@cablespeed.com
Mike Montgomery	NCW Mule Deer	509-665-0524	
Glen Landrus	Found. Wild Sheep	509-243-4151	ramslam@hotmail.com
Ron Bruno	Wen. Sports. Assoc.	509-884-9639	ron.bruno@verizon.net
Rosana Sokolowski	Chelan PUD	509-661-4175	Rosana.Sokolowski@chelanpud.org
Janel Duffy	Chelan PUD	509-661-4400	Janel.Duffy@chelanpud.org

Meeting Purpose: First meeting of the Lake Chelan Wildlife Forum to initiate Lake Chelan license implementation

Agenda

<u>Tasks</u>	<u>Discussion</u>	<u>Action Items</u>
Introductions		Attendees listed in bold above.
Lake Chelan Wildlife Forum meeting ground rules and goals and objectives.	Ground rules and goals & objectives were distributed and discussed	
Review License Order conditions	Implementation plan outline was discussed. <ul style="list-style-type: none"> • Upland Habitat Improvements 	

- Riparian Habitat Improvements

Wildlife Project schedules

Janel reviewed Wildlife Project schedules.

Wildlife Habitat Plan development

Forum discussed Wildlife Habitat Plan development.

Next Steps

- Bob Kuntz: Mail Skagit Project Wildlife Implementation Plan to Jeff.
- Jeff - Questions for Chelan-Douglas Land Trust: Will normal USDA-FS land management practices (controlled burn, weed control, seeding, etc.) be allowed with WDFW permission on easement lands? Will revocation language be included in the easements?
- Jeff: Pursue internal PUD view on using funding to prepare an EA for noxious weed control measures.
- Forum members are asked have implementation plan draft language submitted to Jeff by April 5. He will have draft compiled by next meeting.
- Jeff will add subsections to the Wildlife Plan Outline (Forest Service, Department of Wildlife, and National Park Services).

Future meetings are scheduled for:

- April 25, 2007, 9 a.m. – 12 p.m.
- July 10, 2007, 9 a.m. – 12 p.m.
- August 29, 2007, 9 a.m. – 12 p.m.

Handouts:

- | | |
|---|--|
| <ul style="list-style-type: none"> • Ground Rules for Forum Participation • Forum Goals and Objectives • Project Schedules | <ul style="list-style-type: none"> • License documents (FERC License Order; Settlement Agreement; License articles; Comprehensive Plans) • Implementation Plan Outline |
|---|--|

Parking Lot items:

Lake Chelan Wildlife Forum (LCWF) Meeting

Date: April 25, 2007
 Time: 9:00 am – 12:00 noon
 Location: Chelan PUD Headquarters, Wenatchee, WA
 Second Floor Conference Room

Call in number: (509)661-4844, Password is 4000.

Meeting called by: Jeff Osborn,
Chelan PUD

Type of meeting: LCWF Meeting

Note taker: Tracy Dunning

LCWF Members

<u>Name</u>	<u>Agency</u>	<u>Phone</u>	<u>Email</u>
Tony Eldred	WDFW	509-662-0452	eldredte@dfw.wa.gov
Beau Patterson	WDFW	509-662-0452	pattebap@dfw.wa.gov
Carmen Andonaegui	WDFW	509-679-4159	andonca@dfw.wa.gov
Curt Leigh	WDFW	360-902-2422	leighcsl@dfw.wa.gov
Alex Martinez	USDA-FS	509-662-4335	ramartinez@fs.fed.us
Joe Kastenholz	USDA-FS	509-682-2576 x214	jkastenholz@fs.fed.us
Mallroy Lenz	USDA-FS	509-682-2577	mlenz@fs.fed.us
Steve Lewis	USFWS	509-665-3508 x14	Stephen.Lewis@fws.gov
Von Pope	Chelan PUD	509-661-4625	von.pope@chelanpud.org
Jeff Osborn	Chelan PUD	509-661-4176	jeffa@chelanpud.org
Bob Kuntz	NPS	360-856-5700 x368	Robert.Kuntz@nps.gov
Jack Oelfke	NPS	360-856-5700 x376	Jack.Oelfke@nps.gov
Jerry Marco	CCT	509-634-2114	jerry.marco@colvilletribes.com
Mark Oswood	NCW Audubon	509-662-9087	info.@ncwaududon.org
Jon Soest	NCW Audubon	509-763-1030	jfs.seanet.com
Dan McKinley	Nat. Wild Turkey	509-448-5690	nwtdan@hotmail.com
Gary Denniston	LCSA	509-687-4078	geedee@cablespeed.com
Mike Montgomery	NCW Mule Deer	509-665-0524	
Glen Landrus	Found. Wild Sheep	509-243-4151	ramslam@hotmail.com
Ron Bruno	Wen. Sports. Assoc.	509-884-9639	ron.bruno@verizon.net

Meeting Purpose: Lake Chelan Wildlife Forum meeting to continue Lake Chelan license implementation

Agenda

<u>Task</u>	<u>Time</u>	<u>Discussion Lead</u>
Welcome and Introductions	9:00 to 9:10	Jeff Osborn
Review January 30, 2007 Lake Chelan Wildlife Forum meeting minutes	9:10 to 9:45	Jeff Osborn, Forum
Conservation easement update	9:45 to 10:15	Jeff Osborn, Forum
Review draft Wildlife Habitat Plan	10:15 to 11:45	NPS; USDA-FS; WDFW; Forum
Next Steps	11:45 to 12:00	Jeff Osborn, Forum
<ul style="list-style-type: none"> • Review Action Items • Provide comments for second draft Wildlife Habitat Plan 		

Additional Information

Handouts: agenda, January 30 LCWF meeting minutes, draft Wildlife Habitat Plan.

Lake Chelan Wildlife Forum (LCWF) Meeting

Date: April 25, 2007
 Time: 9:00 am – 12:00 noon
 Location: Chelan PUD Headquarters, Wenatchee, WA
 Second Floor Conference Room

Call in number: (509)661-4844, Password is 4000.

Meeting called by: Jeff Osborn,
Chelan PUD

Type of meeting: LCWF Meeting

Note taker: Tracy Dunning

LCWF Members

<u>Name</u>	<u>Agency</u>	<u>Phone</u>	<u>Email</u>
Tony Eldred	WDFW	509-662-0452	eldredte@dfw.wa.gov
Beau Patterson	WDFW	509-662-0452	pattebap@dfw.wa.gov
Carmen Andonaegui	WDFW	509-679-4159	andonca@dfw.wa.gov
Curt Leigh	WDFW	360-902-2422	leighcsl@dfw.wa.gov
Alex Martinez	USDA-FS	509-662-4335	ramartinez@fs.fed.us
Joe Kastenholz	USDA-FS	509-682-2576 x214	jkastenholz@fs.fed.us
Mallory Lenz	USDA-FS	509-682-2577	mlenz@fs.fed.us
Steve Lewis	USFWS	509-665-3508 x14	Stephen.Lewis@fws.gov
Von Pope	Chelan PUD	509-661-4625	von.pope@chelanpud.org
Jeff Osborn	Chelan PUD	509-661-4176	jeffa@chelanpud.org
Bob Kuntz	NPS	360-856-5700 x368	Robert.Kuntz@nps.gov
Jack Oelfke	NPS	360-856-5700 x376	Jack.Oelfke@nps.gov
Jerry Marco	CCT	509-634-2114	jerry.marco@colvilletribes.com
Mark Oswood	NCW Audubon	509-662-9087	info.@ncwaududon.org
Jon Soest	NCW Audubon	509-763-1030	jfs.seanet.com
Dan McKinley	Nat. Wild Turkey	509-448-5690	nwtdan@hotmail.com
Gary Denniston	LCSA	509-687-4078	geedee@cablespeed.com
Mike Montgomery	NCW Mule Deer	509-665-0524	
Glen Landrus	Found. Wild Sheep	509-243-4151	ramslam@hotmail.com
Ron Bruno	Wen. Sports. Assoc.	509-884-9639	ron.bruno@verizon.net
Rosana Sokolowski	Chelan PUD	509-661-4175	Rosana.Sokolowski@chelanpud.org
Michelle Smith	Chelan PUD	509-661-4180	Michelle.Smith@chelanpud.org

Attendees listed in bold above.

Agenda

<u>Task</u>	<u>Discussion</u>	<u>Action Items</u>
Welcome and Introductions		
Reviewed previous meeting forum meeting minutes.		
Update on rehearing order	<ul style="list-style-type: none"> Liability protection-FERC ruled that PUD must go ahead with 3-year test program on kayaking the Chelan River Gorge without waiting to resolve all liability concerns. Enforce agreed upon cost caps – FERC declined to impose the caps in about half the instances and accepted the other half. Expansion of project boundary for certain wildlife habitats and recreation improvements – FERC ruled that the District may be required to bring certain lands into the project 	<ul style="list-style-type: none"> Jeff will check into Statement of Agreement for delaying funding. Jeff will arrange meeting to discuss implementation plans for Article 4 and Article 9 (NPS measures).

boundary, depending on what is contained in a wildlife habitat plan to be submitted later. But FERC said lands requiring only one-time actions by the PUD and required recreational enhancements for the NPS and FS would not require those lands to be added to the project boundary.

Conservation easement update

Gordon Congdon sent a letter to landowners but only received a few responses.

- Jeff will arrange a meeting with Chelan Douglas Land Trust.

Review draft Wildlife Habitat Plan

Forum members provided input to plan.

- Comments due May 9 (both meeting minutes and Wildlife Habitat Plan).
- Mallory will send an electronic version of map of habitat improvement projects to Von and Jeff for inclusion in plan.
- Jeff will discuss language with legal department regarding invoices and set payments made annually versus quarterly.
- Agency members will check with agency management on whether payments can be made annually versus quarterly.
- Von will check on number of bird feeders and Tony will report to group decision on whether to continue feeding.
- Next meeting is July 10, 2007.

Parking Lot Items

Lake Chelan Wildlife Forum (LCWF) Meeting

Date: July 10, 2007
 Time: 9:00 am – 12:00 noon
 Location: Chelan PUD Headquarters, Wenatchee, WA
 Second Floor Conference Room

Call in number: (509)661-4844, Password is 4000.

Meeting called by: Jeff Osborn,
Chelan PUD

Type of meeting: LCWF Meeting

Note taker: Pat Smith

LCWF Members

<u>Name</u>	<u>Agency</u>	<u>Phone</u>	<u>Email</u>
Tony Eldred	WDFW	509-662-0452	eldredte@dfw.wa.gov
Beau Patterson	WDFW	509-662-0452	pattebap@dfw.wa.gov
Carmen Andonaegui	WDFW	509-679-4159	andonca@dfw.wa.gov
Curt Leigh	WDFW	360-902-2422	leighcsl@dfw.wa.gov
Alex Martinez	USDA-FS	509-662-4335	ramartinez@fs.fed.us
Joe Kastenholz	USDA-FS	509-682-2576 x214	jkastenholz@fs.fed.us
Mallory Lenz	USDA-FS	509-682-2577	mlenz@fs.fed.us
Steve Lewis	USFWS	509-665-3508 x14	Stephen.Lewis@fws.gov
Von Pope	Chelan PUD	509-661-4625	von.pope@chelanpud.org
Jeff Osborn	Chelan PUD	509-661-4176	jeffa@chelanpud.org
Bob Kuntz	NPS	360-856-5700 x368	Robert.Kuntz@nps.gov
Jack Oelfke	NPS	360-856-5700 x376	Jack.Oelfke@nps.gov
Jerry Marco	CCT	509-634-2114	jerry.marco@colvilletribes.com
Mark Oswood	NCW Audubon	509-662-9087	info.@ncwaududon.org
Jon Soest	NCW Audubon	509-763-1030	jfs.seanet.com
Dan McKinley	Nat. Wild Turkey	509-448-5690	nwtdan@hotmail.com
Gary Denniston	LCSA	509-687-4078	geedee@nwi.net
Mike Montgomery	NCW Mule Deer	509-665-0524	
Glen Landrus	Found. Wild Sheep	509-243-4151	ramslam@hotmail.com
Ron Bruno	Wen. Sports. Assoc.	509-884-9639	ron.bruno@verizon.net

Meeting Purpose: Lake Chelan Wildlife Forum meeting to continue Lake Chelan license implementation

Agenda

<u>Task</u>	<u>Time</u>	<u>Discussion Lead</u>
Welcome and Introductions	9:00 to 9:05	Jeff Osborn
Review April 25, 2007 Lake Chelan Wildlife Forum meeting minutes	9:05 to 9:20	Jeff Osborn, Forum
Conservation easement update	9:20 to 9:40	Jeff Osborn, Forum
Review draft Wildlife Habitat Plan <ul style="list-style-type: none"> • Jon Soest comments • Tony Eldred comments • Bird feeder replacement • NPS sections • Additional edits 	9:40 to 11:45	NPS; USDA-FS; WDFW; Forum
Next Steps <ul style="list-style-type: none"> • Review Action Items • Provide comments for second draft Wildlife Habitat Plan 	11:45 to 12:00	Jeff Osborn, Forum

Additional Information

Handouts: agenda, April 25 LCWF meeting minutes, second draft Wildlife Habitat Plan.

Lake Chelan Wildlife Forum (LCWF) Meeting		Date: July 10, 2007 Time: 9:00 am – 11:30 am Location: Chelan PUD Headquarters, Wenatchee, WA Second Floor Conference Room		
Call in number: (509)661-4844, Password is 4000.				
Meeting called by:	Jeff Osborn, Chelan PUD	Type of meeting:	LCWF Meeting	
		Note taker:	Pat Smith	
LCWF Members				
Name	Agency	Phone	Email	Attendance
Tony Eldred	WDFW	509-662-0452	eldredte@dfw.wa.gov	
Beau Patterson	WDFW	509-662-0452	pattebap@dfw.wa.gov	In Person
Carmen Andonaegui	WDFW	509-679-4159	andonca@dfw.wa.gov	
Curt Leigh	WDFW	360-902-2422	leighcsl@dfw.wa.gov	
Alex Martinez	USDA-FS	509-662-4335	ramartinez@fs.fed.us	
Joe Kastenholz	USDA-FS	509-682-2576 x214	jkastenholz@fs.fed.us	
Mallory Lenz	USDA-FS	509-682-2577	mlenz@fs.fed.us	In Person
Steve Lewis	USFWS	509-665-3508 x14	Stephen.Lewis@fws.gov	
Von Pope	Chelan PUD	509-661-4625	von.pope@chelanpud.org	In Person
Jeff Osborn	Chelan PUD	509-661-4176	jeffa@chelanpud.org	In Person
Bob Kuntz	NPS	360-856-5700 x368	Robert.Kuntz@nps.gov	By Phone
Jack Oelfke	NPS	360-856-5700 x376	Jack.Oelfke@nps.gov	
Jerry Marco	CCT	509-634-2114	jerry.marco@colvilletribes.com	
Mark Oswood	NCW Audubon	509-662-9087	info.@ncwaududon.org	
Jon Soest	NCW Audubon	509-763-1030	jfs.seanet.com	
Dan McKinley	Nat. Wild Turkey	509-448-5690	nwtdan@hotmail.com	
Gary Denniston	LCSA	509-687-4078	geedee@nwi.net	
Mike Montgomery	NCW Mule Deer	509-665-0524		
Glen Landrus	Found. Wild Sheep	509-243-4151	ramslam@hotmail.com	
Ron Bruno	Wen. Sports. Assoc.	509-884-9639	ron.bruno@verizon.net	
Members present shown in bold type.				
Meeting Purpose:	Lake Chelan Wildlife Forum meeting to continue Lake Chelan license implementation			
MINUTES				
<u>Task</u>	<u>Discussion</u>	<u>Action Items</u>		
Welcome and Introductions				
Review April 25, 2007 Lake Chelan Wildlife Forum meeting minutes	Reviewed minutes	Approved as presented		
Conservation easement update	Progress has been slowed because: <ul style="list-style-type: none"> ▪ Change of CDLT Directorship ▪ Rising land prices versus funds allocated ▪ Uncertainty of responses by landowners contacted 	Jeff Osborn will contact Myra Barker in a search for matching funds and meet with new head of the Land Trust, Bob Bugert.		
Review draft Wildlife Habitat Plan <ul style="list-style-type: none"> • Jon Soest comments 	With regard to Jon Soest's comments the group agreed that the Plan did indeed address peripherally bird populations and many other species.	Mallory Lenz will supply a copy of a Forest Service bibliography she developed extensively outlining the effects of fire. Citation: USFS 2002. Okanogan and Wenatchee National Forests Fire Management Plan, Chapter III, Section E - Fire Regimes and Disturbance Processes, Resource Benefits (pages 16-52).		

<ul style="list-style-type: none"> • Tony Eldred comments • Bird feeder replacement • NPS sections • Additional edits 	<p>The group also felt the Forum's focus is on "over winter" species because other species are migratory. They pointed out the residual benefits to the migratory population.</p> <p>Von Pope indicated the PUD would like to begin building the three bird feeder replacements as soon as he is told we have an agreement on the sites for their placement.</p> <p>Reviewed NPS suggested changes.</p> <p>Payment Agreements</p>	<p>Jeff agreed to contact Jon, discuss with him his issues, and add a paragraph to the Plan indicating some of those benefits, as appropriate.</p> <p>Mallory will review the Memorandum of Understanding from the past to see if it will carry forward to the present.</p> <p>Von Pope will send Mallory a list of sites for the three bird feeders.</p> <p>Jeff will edit this section in the next draft per Bob Kunz recommendation: basically See Stehekin Area Plan.</p> <p>Jeff will check on the status of the Payment Agreements.</p>
<p>Next Steps</p> <ul style="list-style-type: none"> • Review Final Draft of the Wildlife Habitat Plan prior to 8/29 meeting • Send out for 30-day comment period after 8/29 meeting 		
<p>Additional Information: Next Meeting August 29, 2007</p>		

Lake Chelan Wildlife Forum (LCWF) Meeting

Date: August 29, 2007

Time: 9:00 am – 12:00 noon

Location: Chelan PUD Headquarters, Wenatchee, WA
Second Floor Conference Room

Call in number: (509)661-4844, Password is 4000.

Meeting called by: Jeff Osborn,
Chelan PUD

Type of meeting: LCWF Meeting

Note taker: Pat Smith

LCWF Members

<u>Name</u>	<u>Agency</u>	<u>Phone</u>	<u>Email</u>
Tony Eldred	WDFW	509-662-0452	eldredte@dfw.wa.gov
Carmen Andonaegui	WDFW	509-679-4159	andonca@dfw.wa.gov
Curt Leigh	WDFW	360-902-2422	leighcsl@dfw.wa.gov
Alex Martinez	USDA-FS	509-662-4335	ramartinez@fs.fed.us
Joe Kastenholz	USDA-FS	509-682-2576 x214	jkastenholz@fs.fed.us
Mallory Lenz	USDA-FS	509-682-2577	mlenz@fs.fed.us
Steve Lewis	USFWS	509-665-3508 x14	Stephen.Lewis@fws.gov
Von Pope	Chelan PUD	509-661-4625	von.pope@chelanpud.org
Jeff Osborn	Chelan PUD	509-661-4176	jeffa@chelanpud.org
Bob Kuntz	NPS	360-856-5700 x368	Robert.Kuntz@nps.gov
Jack Oelfke	NPS	360-856-5700 x376	Jack.Oelfke@nps.gov
Jerry Marco	CCT	509-634-2114	jerry.marco@colvilletribes.com
Mark Oswood	NCW Audubon	509-662-9087	info@ncwaududon.org
Jon Soest	NCW Audubon	509-763-1030	jfs.seanet.com
Dan McKinley	Nat. Wild Turkey	509-448-5690	nwtdan@hotmail.com
Gary Denniston	LCSA	509-687-4078	geedee@nwi.net
Mike Montgomery	NCW Mule Deer	509-665-0524	
Glen Landrus	Found. Wild Sheep	509-243-4151	ramslam@hotmail.com
Ron Bruno	Wen. Sports. Assoc.	509-884-9639	ron.bruno@verizon.net

Meeting Purpose: Lake Chelan Wildlife Forum meeting to finalize Wildlife Habitat Plan

Agenda

<u>Task</u>	<u>Time</u>	<u>Discussion Lead</u>
Welcome and Introductions	9:00 to 9:05	Jeff Osborn
Review July 10, 2007 Lake Chelan Wildlife Forum meeting minutes	9:05 to 9:20	Jeff Osborn, Forum
Conservation easement update	9:20 to 9:40	Jeff Osborn, Forum
Review draft Wildlife Habitat Plan	9:40 to 11:45	NPS; USDA-FS; WDFW; Forum
<ul style="list-style-type: none"> Bird feeder replacement update Jon Soest comments Additional edits 		Von Pope Forum Forum
Next Steps	11:45 to 12:00	Jeff Osborn, Forum
<ul style="list-style-type: none"> Review Action Items Provide comments for final Wildlife Habitat Plan 		Forum members

Additional Information

Handouts: agenda, July 10 LCWF meeting minutes, draft final Wildlife Habitat Plan.

30 Day Comments

No comments received.