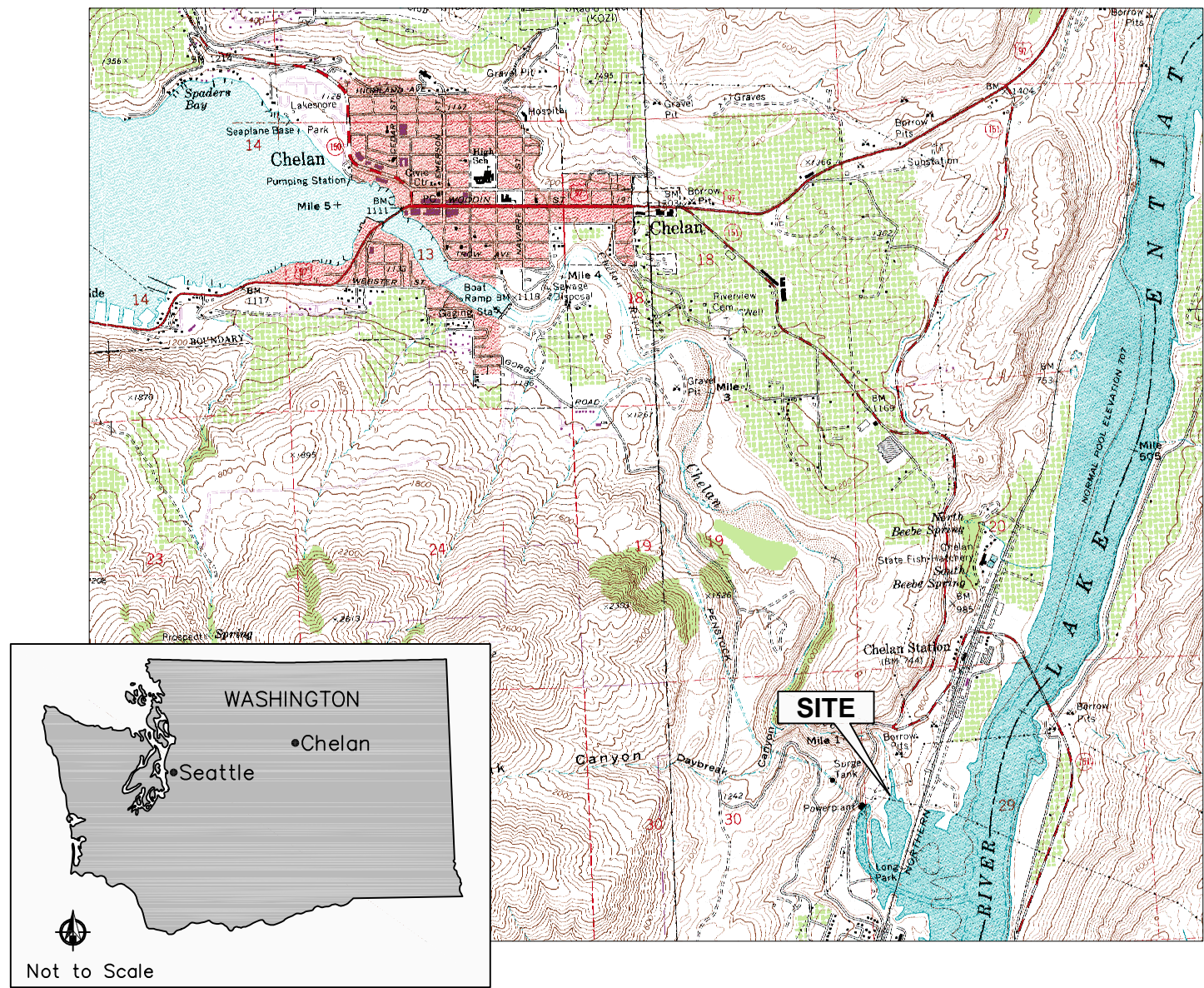


PUBLIC UTILITY DISTRICT NUMBER 1 OF CHELAN COUNTY


# HABITAT RESTORATION OF THE CHELAN RIVER REACH 4 AND TAILRACE

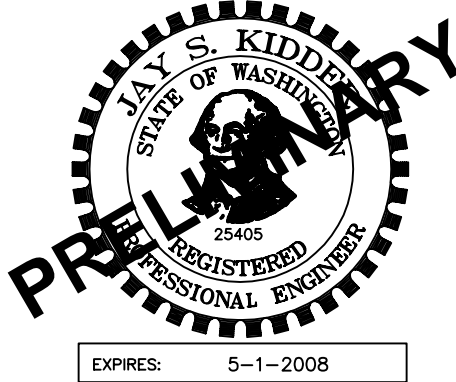
30% DESIGN SUBMITTAL

SHEET	DRAWING LIST	PDF FILE NAME
1	COVER AND INDEX	FERC-COVER AND INDEX
2	ABBREVIATIONS AND SYMBOLS	FERC-ABBREVIATIONS AND SYMBOLS
3	OVERALL SITE PLAN DESIGN TOPOGRAPHY AND ALL ALIGNMENTS	Chelan Falls design alignment PLAN1 (1)
4	OVERALL SITE PLAN DESIGN ALIGNMENTS	<not provided>
5	SITE PLAN AND HABITAT IMPROVEMENTS	Chelan Falls design alignment PLAN1 (3) (1)
6	PLAN AND PROFILE HABITAT CHANNEL TO HYDRAULIC CONTROL STRUCTURE	<not provided>
7	DETAILED SITE PLAN HABITAT CHANNEL POOLS AND RIFFLES	FERC-DETAILED SITE PLAN
8	DETAILED PROFILES HABITAT CHANNEL TYPICAL POOLS AND RIFFLES	Chelan Falls design alignment HAB CHANNEL PRO (1)
9	PLAN SECTIONS AND DETAILS HABITAT CHANNEL	<not provided>
10	PLAN, SECTIONS, AND DETAIL LOG STRUCTURES	FERC-DETAILS
11	PLAN SECTIONS AND DETAILS ROCK STRUCTURES	<not provided>
12	DETAILED SITE PLAN AND PROFILE TAILRACE HABITAT IMPROVEMENTS	Chelan Falls design alignment DETAIL PLAN (2) (1)
13	SECTIONS AND DETAILS TAILRACE HABITAT IMPROVEMENTS	<not provided>
14	SECTIONS AND DETAILS TAILRACE HABITAT IMPROVEMENTS DOWNSTREAM	<not provided>
15	TAILRACE SPAWNING AREA SECTIONS	<not provided>
16	TAILRACE SPAWNING AREA DETAILS	<not provided>
17	DETAILED PLAN HYDRAULIC CONTROL STRUCTURE AND INLET POOL	Chelan Falls design alignment DETAIL PLAN (1)
18	HYDRAULIC CONTROL STRUCTURE SECTIONS	<not provided>
19	HYDRAULIC CONTROL STRUCTURE SECTIONS AND DETAILS	Chelan Falls design alignment SECTIONS1 (1)
20	HYDRAULIC CONTROL STRUCTURE SECTIONS AND DETAILS	Chelan Falls design alignment SECTIONS2 (1)
21	HYDRAULIC CONTROL STRUCTURE SECTIONS AND DETAILS	<not provided>



VICINITY MAP  
1"=3000'

REV	DATE	DESCRIPTION	DRFT	DRWN	CHK'D
EXHIBIT C-X			SHEET 1 OF X		
PUBLIC UTILITY DISTRICT NO. 1 OF CHELAN COUNTY WENATCHEE, WASHINGTON					
CHELAN RIVER HABITAT RESTORATION					
COVER AND INDEX					
FERC. PROJECT NO.: 637			DATE: MARCH 19, 2007		
<div><b>ANCHOR</b> ENVIRONMENTAL, L.L.C. 1423 3RD AVENUE, SUITE 300 SEATTLE, WA 98101 (206) 287-9130</div>					





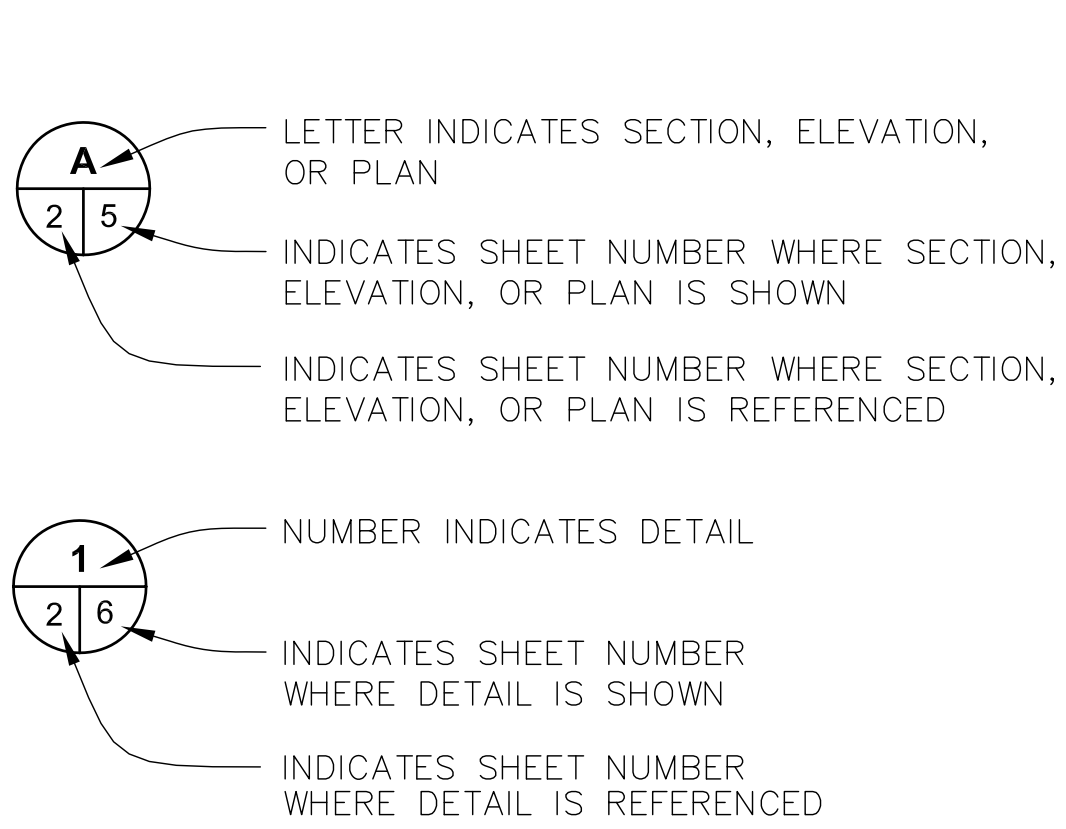
ABBREVIATIONS:

Δ	TOTAL CURVE ANGLE
'	FEET, MINUTES
"	INCHES, SECONDS
°	DEGREES
CB	CATCH BASIN
CML	CONCRETE MORTAR LINED
CMU	CONCRETE MASONRY UNIT
CONC.	CONCRETE
CPE	CORRUGATED POLYETHYLENE PIPE
D	DRAIN
DNR	WASHINGTON STATE DEPARTMENT OF NATURAL RESOURCES
DOE	WASHINGTON STATE DEPARTMENT OF ECOLOGY
E	EASTING
EL., ELEV.	ELEVATION
EX., EXIST.	EXISTING
FCA	FLANGED COUPLING ADAPTER
FF	FINISHED FLOOR
FG	FINISHED GRADE
FL	FLANGE, FLANGED
FT	FOOT, FEET
GALV.	GALVANIZED
GV	GATE VALVE
HDPE	HIGH-DENSITY POLYETHYLENE
HGL	HYDRAULIC GRADE LINE
HOR.	HORIZONTAL
I.E.	INVERT ELEVATION
IN.	INCHES
L	LENGTH
LF	LINEAR FEET
L.G.E.	LICENSED ENGINEERING GEOLOGIST
MAX.	MAXIMUM
MH	MANHOLE
MIN.	MINIMUM
N	NORTHING
NO.	NUMBER
OVF	OVERFLOW
P	POWER
PC	POINT OF CURVE
P.E.	PROFESSIONAL ENGINEER
PT	POINT OF TANGENCY
PVC	POLYVINYL CHLORIDE, POINT OF VERTICAL CURVE
PE	PLAIN END, PROFESSIONAL ENGINEER
PLS	PROFESSIONAL LAND SURVEYOR
PR., PROP.	PROPOSED
R, RAD.	RADIUS
ROW	RIGHT OF WAY
S	SLOPE, SANITARY SEWER
SD	STORM DRAIN
STA.	STATION
TESC	TEMPORARY EROSION/SEDIMENT CONTROL
TOW	TOP OF WALL
TYP	TYPICAL
VERT.	VERTICAL
W	WATER
WDFW	WASHINGTON STATE DEPARTMENT OF FISH AND WILDLIFE
WSDOT	WASHINGTON STATE DEPARTMENT OF TRANSPORTATION
W.S.E.	WATER SURFACE ELEVATION

LEGEND:


	DITCH
	FENCE
	RIGHT-OF-WAY
	INTERVAL CONTOUR
	INDEX CONTOUR
	OVERHEAD POWER LINE
	PROPERTY LINE
	LOG JAM
	LOG VANES
	TEST PIT LOCATION
	LIGHT
	SURVEY CONTROL POINT
	SURVEY MONUMENT

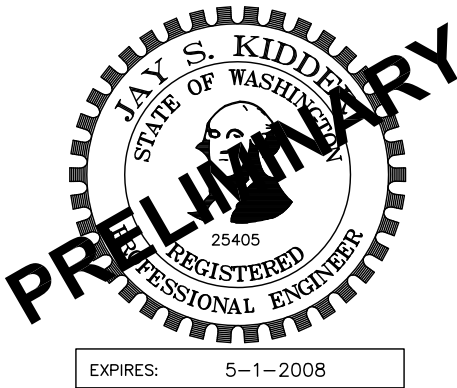
DETAIL/SECTION DESIGNATION:



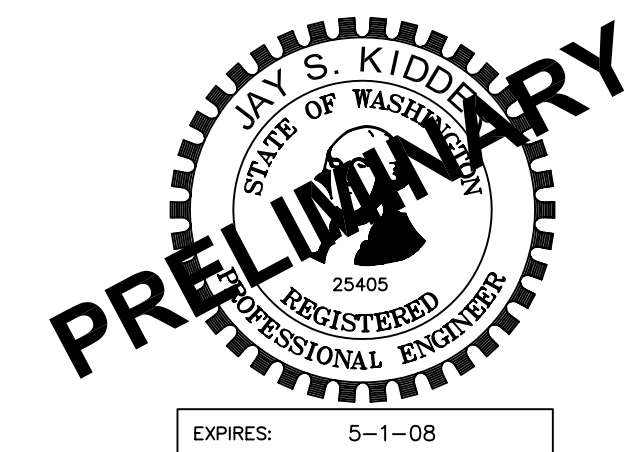
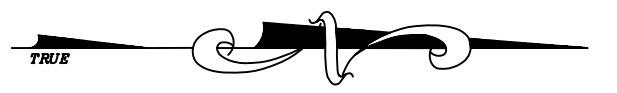
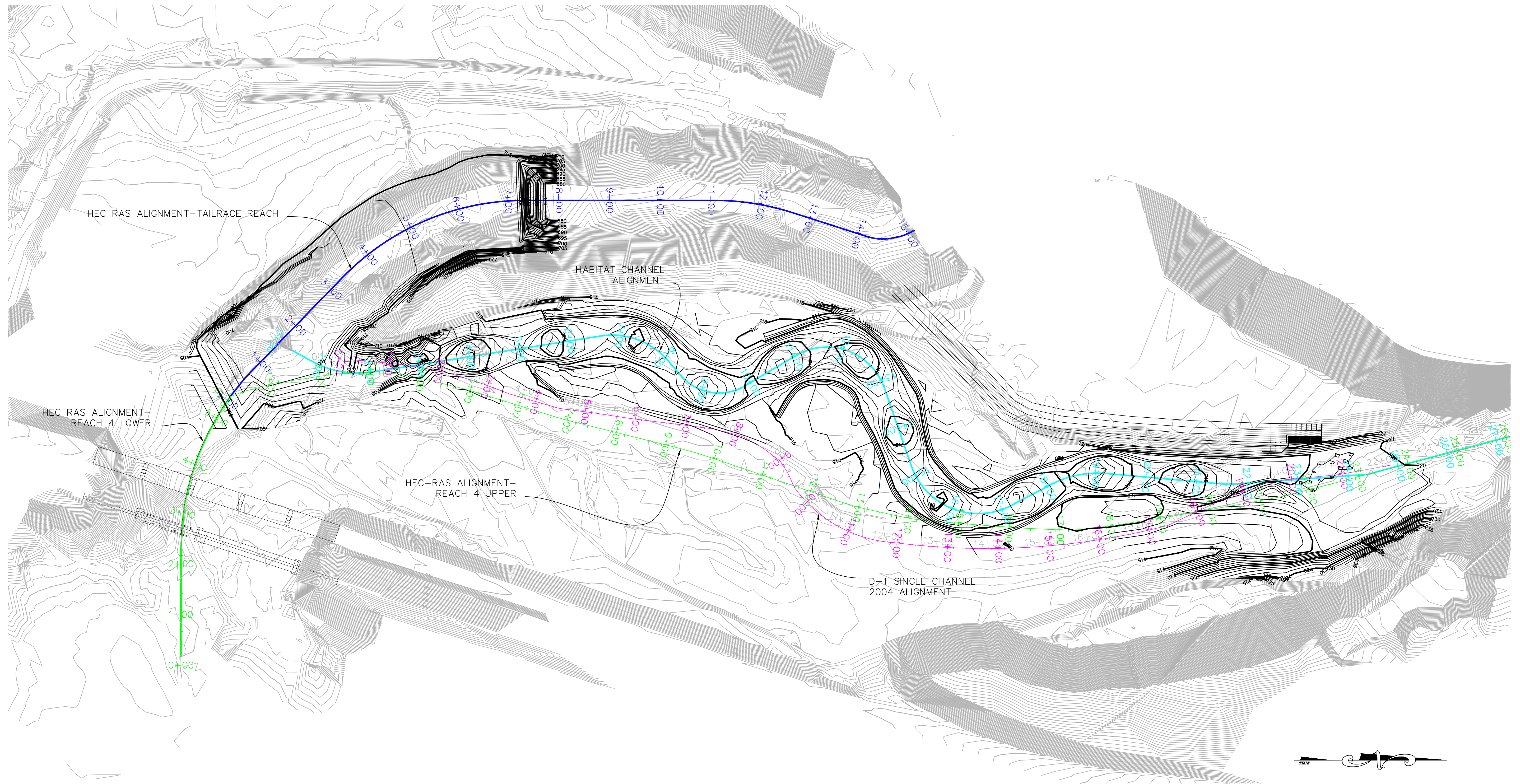
DATUM:


HORIZONTAL DATUM: NAD 83 SP WA NORTH  
VERTICAL DATUM: NGVD-29

REV	DATE	DESCRIPTION	DRFT	DRWN	CHK'D
EXHIBIT C-X			SHEET 1 OF X		
PUBLIC UTILITY DISTRICT NO. 1 OF CHELAN COUNTY WENATCHEE, WASHINGTON					
CHELAN RIVER					
ABBREVIATIONS AND SYMBOLS					
FERC. PROJECT NO.: 637			DATE: MARCH 19, 2007		
<div><b>ANCHOR</b> ENVIRONMENTAL, L.L.C. 1423 3RD AVENUE, SUITE 300 SEATTLE, WA 98101 (206) 287-9130</div>					

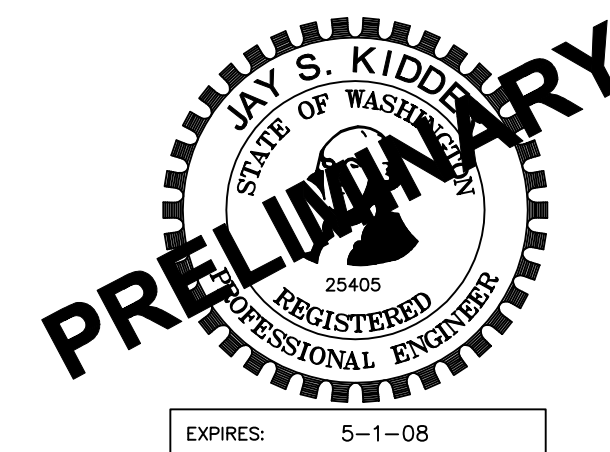
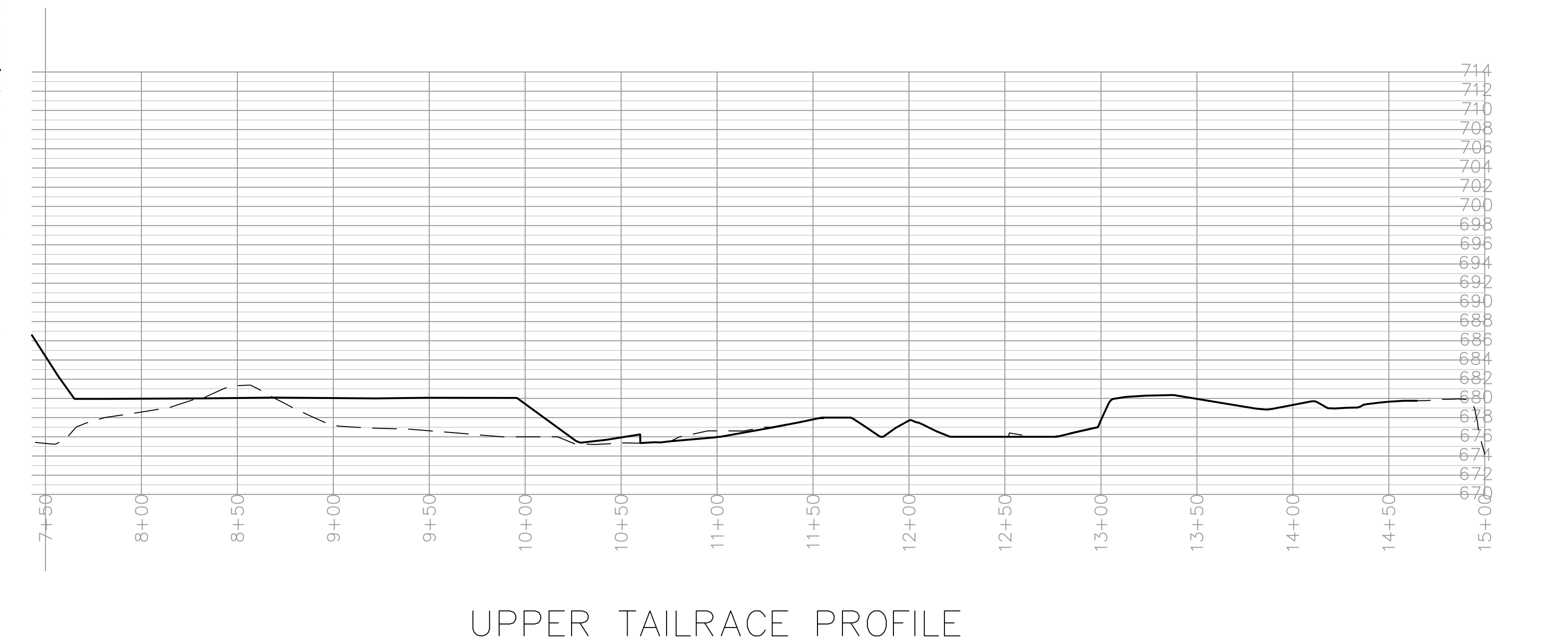
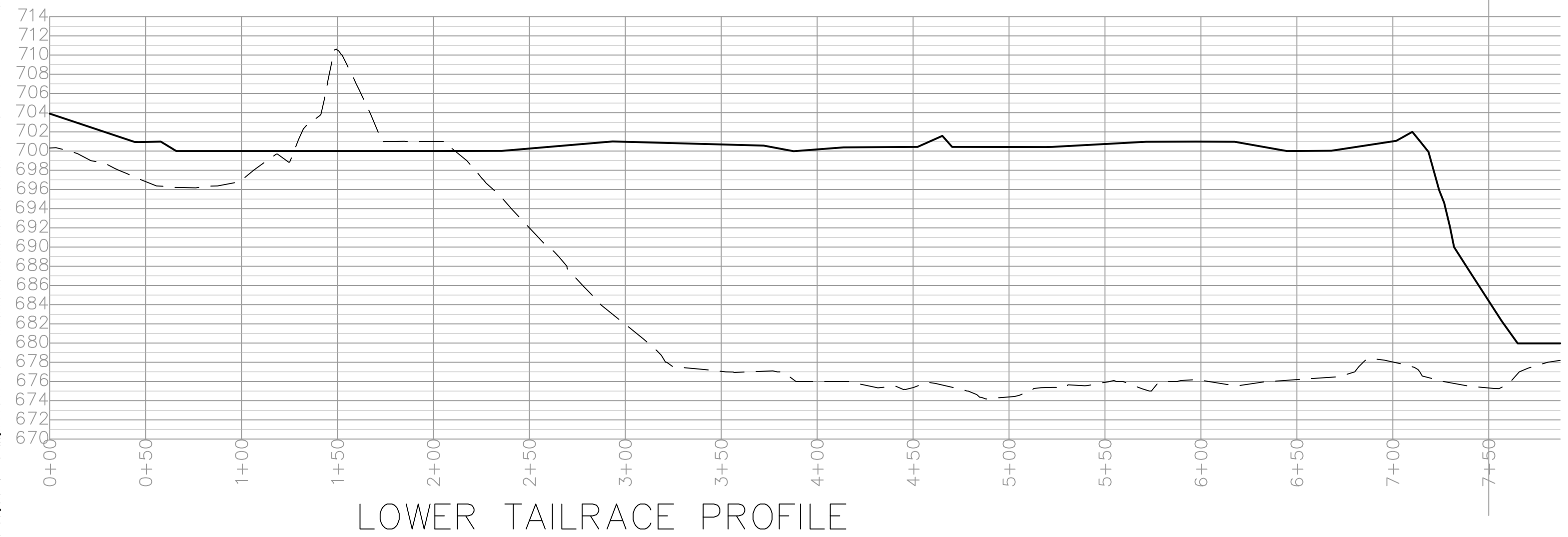
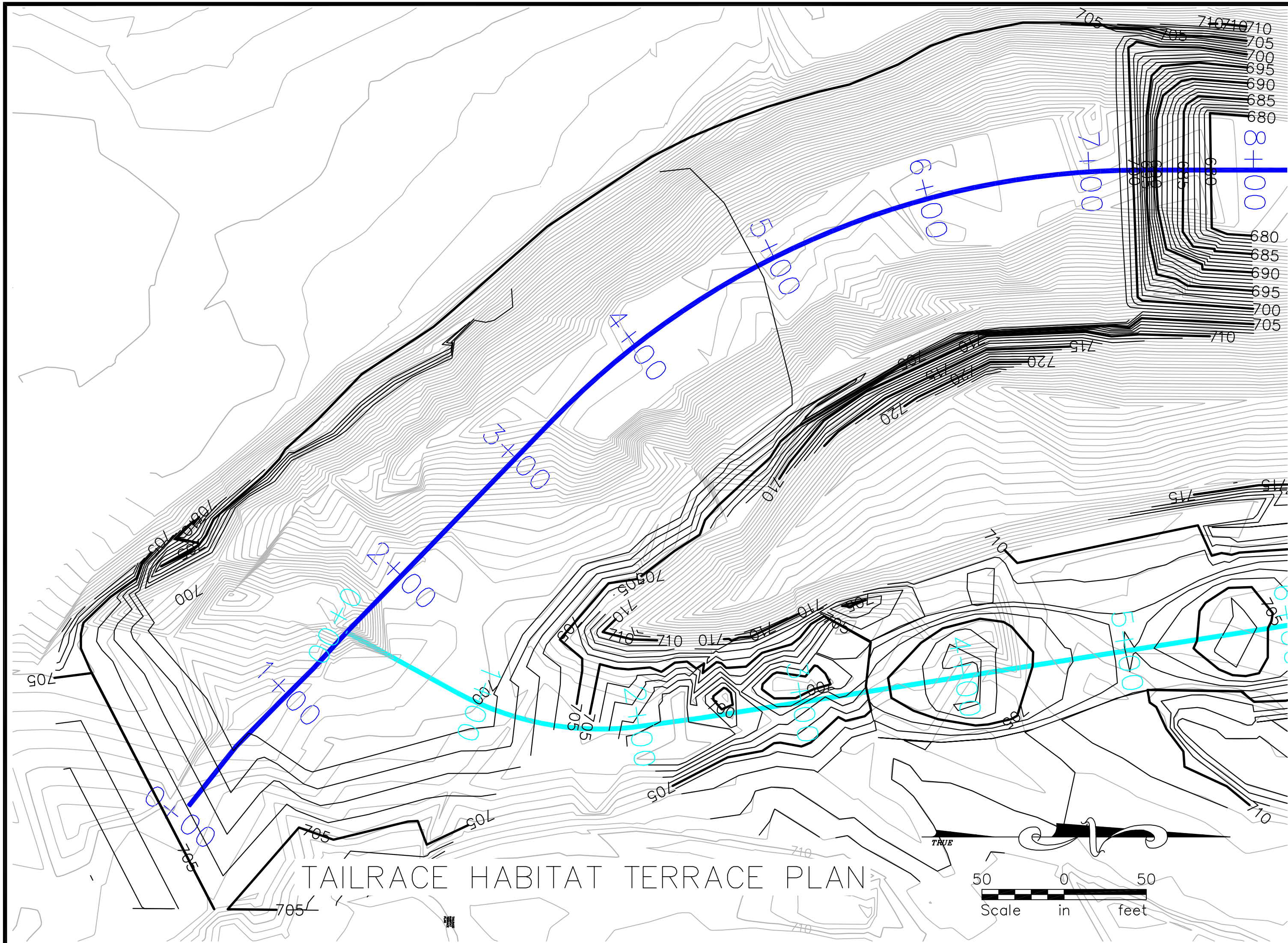







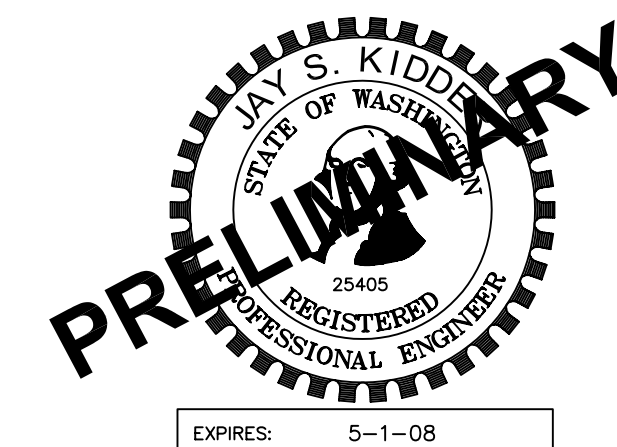
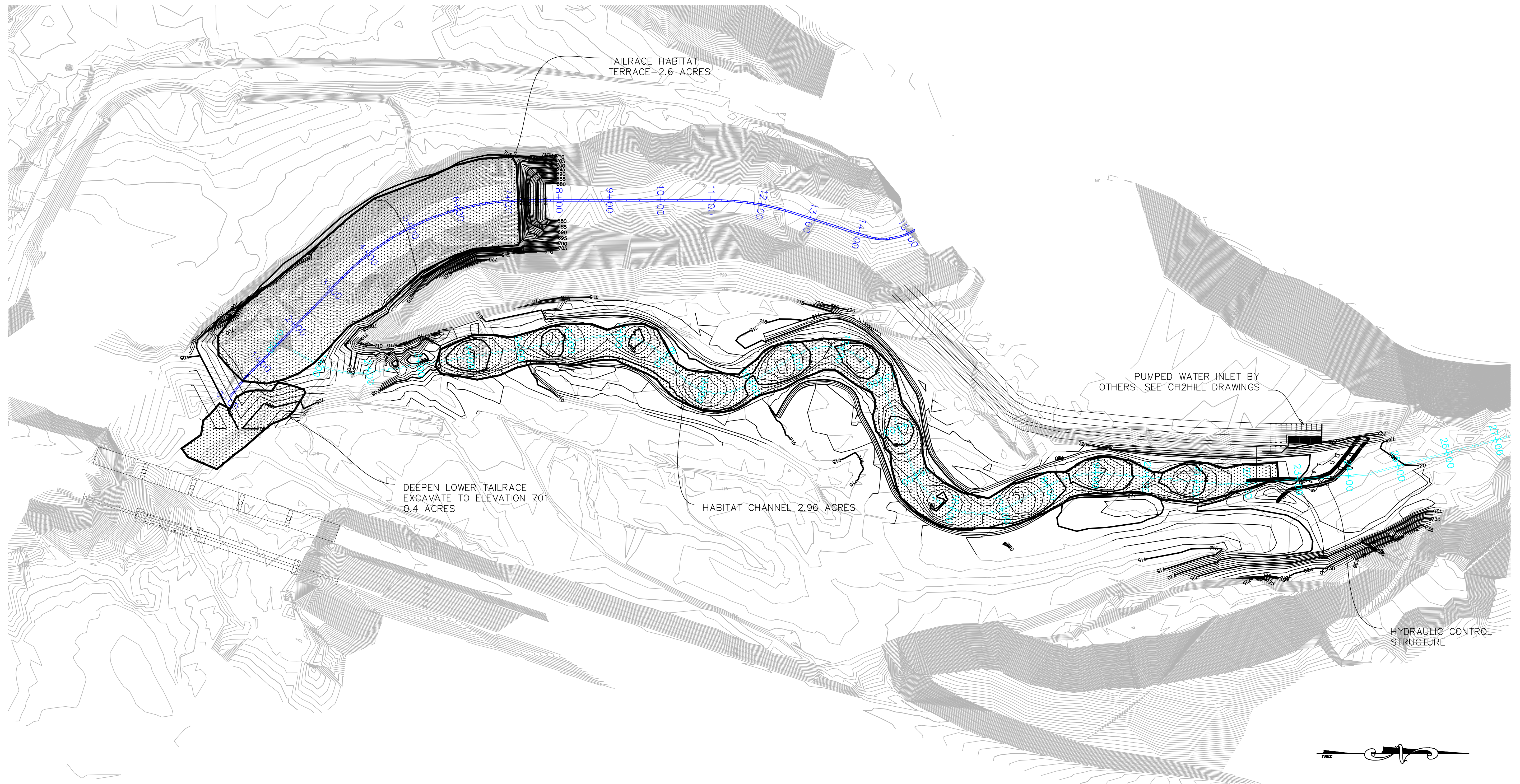
REV	DATE	DESCRIPTION	DRFT	DRWN	CHK'D
EXHIBIT			SHEET OF		
PUBLIC UTILITY DISTRICT NO. 1 OF CHELAN COUNTY WENATCHEE, WASHINGTON					
CHELAN RIVER OVERALL SITE PLAN DESIGN TOPOGRAPHY AND ALL ALIGNMENTS					
FERC. PROJECT NO.: 637			DATE: 3-19-2007		
<div><div><div>ANCHOR</div><div>ENVIRONMENTAL, L.L.C.</div><div>1423 3RD AVENUE, SUITE 300 SEATTLE, WA 98101 (206) 287-9130</div></div></div>					






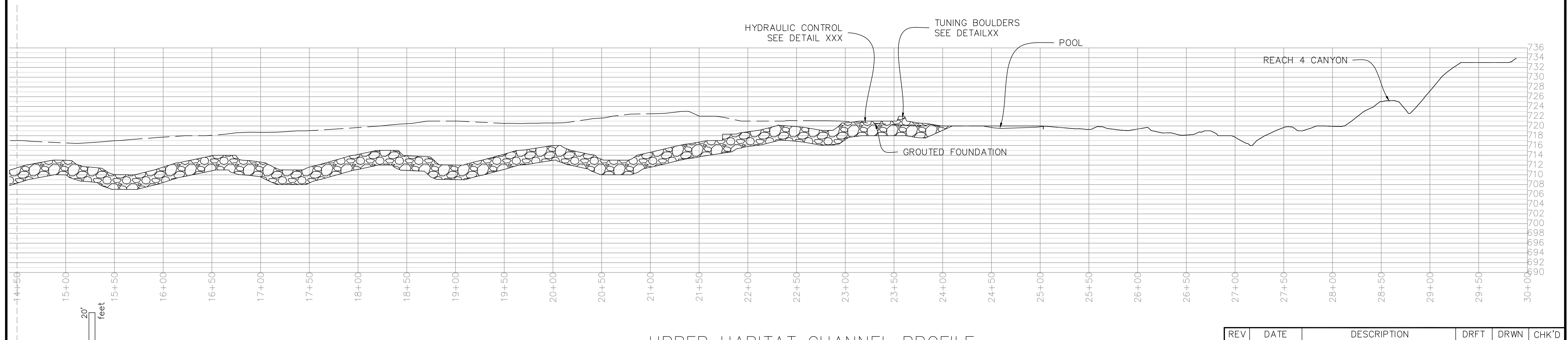
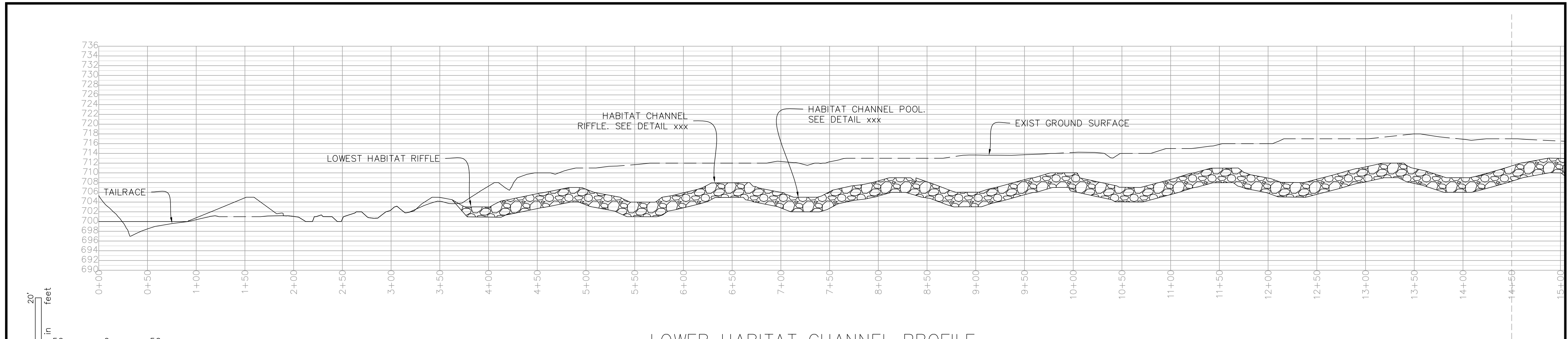
REV	DATE	DESCRIPTION	DRFT	DRWN	CHK'D
EXHIBIT			SHEET OF		
PUBLIC UTILITY DISTRICT NO. 1 OF CHELAN COUNTY WENATCHEE, WASHINGTON					
CHELAN RIVER DETAILED SITE PLAN AND PROFILE TAILRACE HABITAT IMPROVEMENTS					
FERC. PROJECT NO.: 637			DATE: 3-19-2007		
 <b>ANCHOR</b> ENVIRONMENTAL, L.L.C. 1423 3RD AVENUE, SUITE 300 SEATTLE, WA 98101 (206) 287-9130					




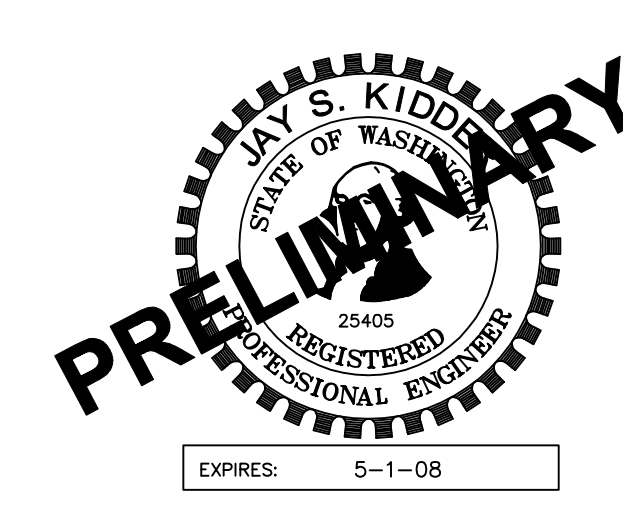


REV	DATE	DESCRIPTION	DRFT	DRWN	CHK'D
EXHIBIT			SHEET OF		
PUBLIC UTILITY DISTRICT NO. 1 OF CHELAN COUNTY WENATCHEE, WASHINGTON					
CHELAN RIVER SITE PLAN AND HABITAT IMPROVEMENTS					
FERC. PROJECT NO.: 637			DATE: 3-19-2007		
<div><div><div>ANCHOR</div><div>ENVIRONMENTAL, L.L.C.</div><div>1423 3RD AVENUE, SUITE 300 SEATTLE, WA 98101 (206) 287-9130</div></div></div>					

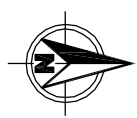




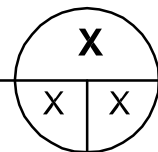
REV	DATE	DESCRIPTION	DRFT	DRWN	CHK'D
EXHIBIT			SHEET OF		
PUBLIC UTILITY DISTRICT NO. 1 OF CHELAN COUNTY WENATCHEE, WASHINGTON					
CHELAN RIVER DETAILED PROFILES HABITAT CHANNEL TYPICAL POOLS AND RIFFLES					
FERC. PROJECT NO.: 637			DATE: 3-19-2007		
<div><div><b>ANCHOR</b> ENVIRONMENTAL, L.L.C. 1423 3RD AVENUE, SUITE 300 SEATTLE, WA 98101 (206) 287-9130</div></div>					



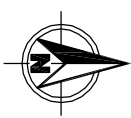
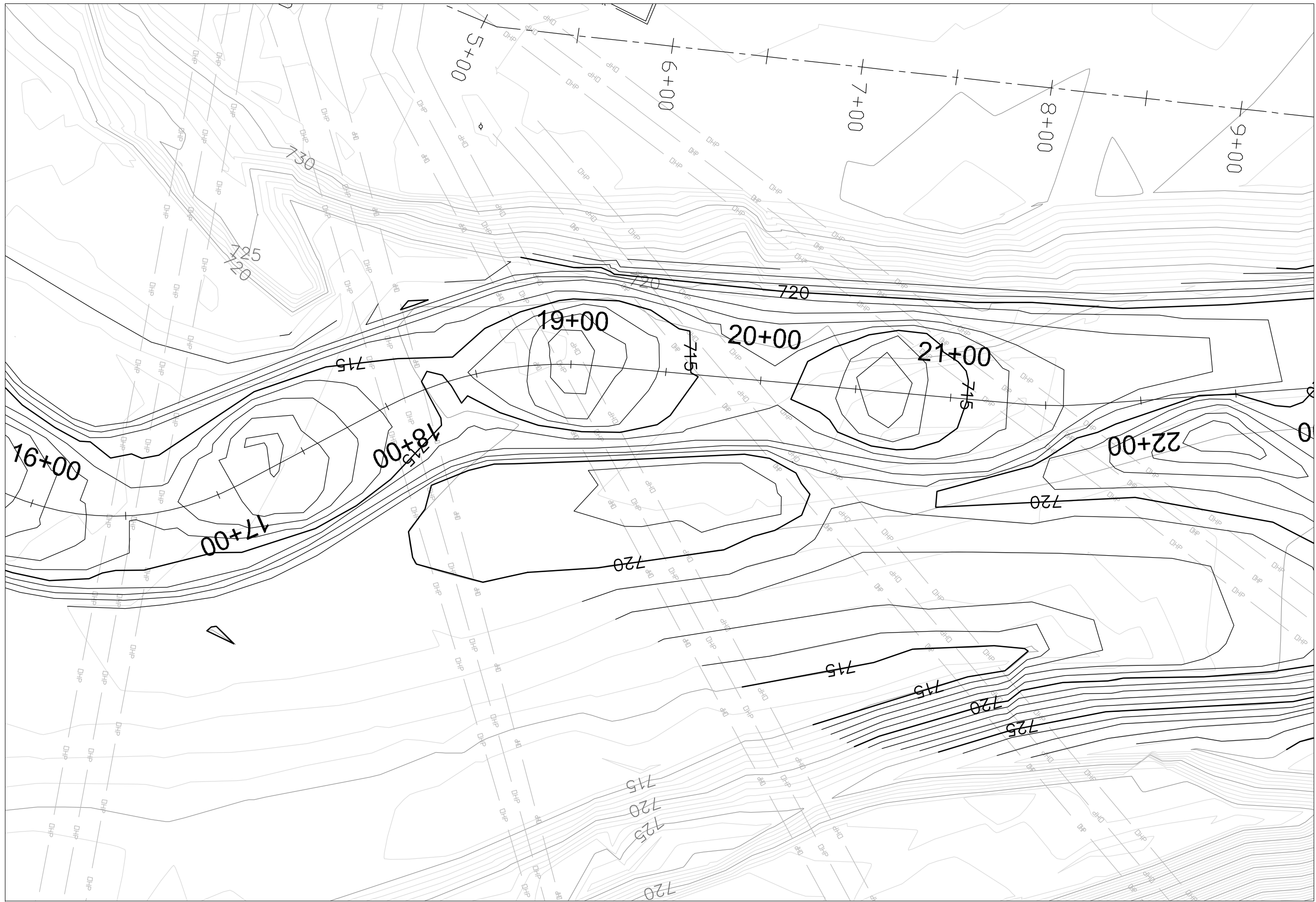
Mar 19, 2007 3:42pm dho\mga\Jobs\040034--Chelan\_River\04003401\04003404-21.dwg FERC-DETAILED SITE PLAN



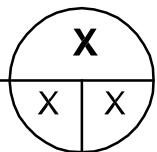
**BYPASS CHANNEL LAYOUT DETAIL (TYP)**  
SCALE: 1" = 50'



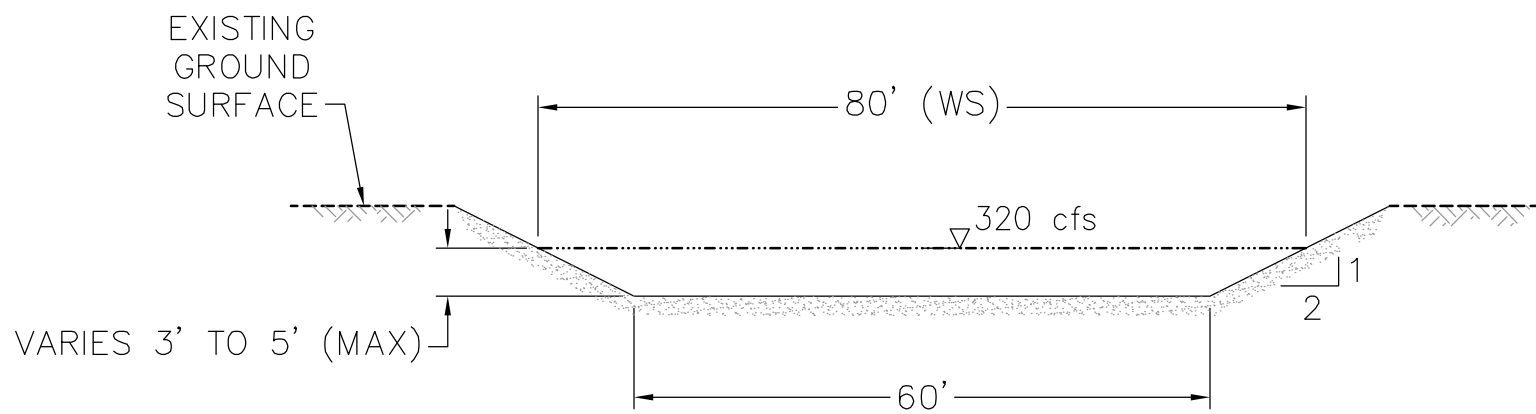
NOTE:  
HORIZONTAL DATUM: NAD 83 SP WA NORTH  
VERTICAL DATUM: NGVD-29



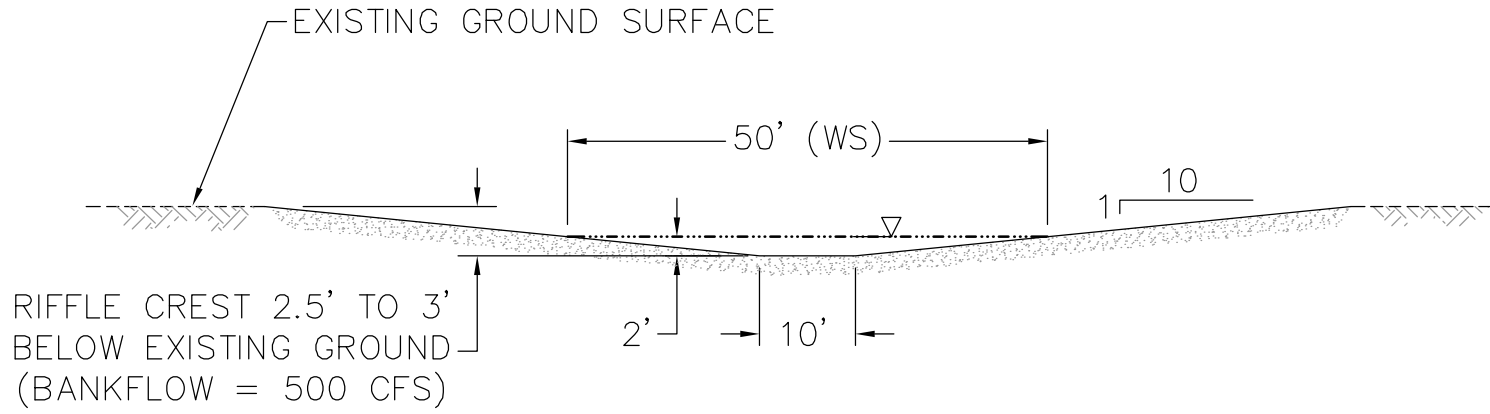
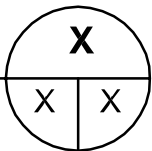
**BYPASS CHANNEL LAYOUT DETAIL (TYP)**  
SCALE: 1" = 50'



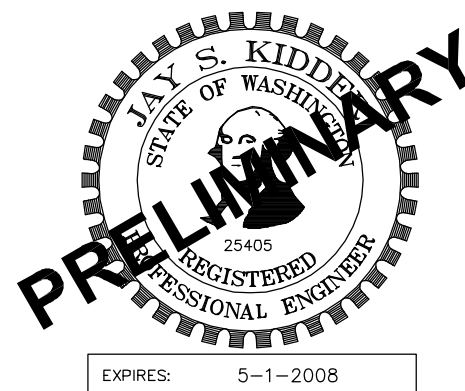
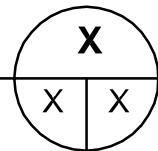
NOTE:  
HORIZONTAL DATUM: NAD 83 SP WA NORTH  
VERTICAL DATUM: NGVD-29




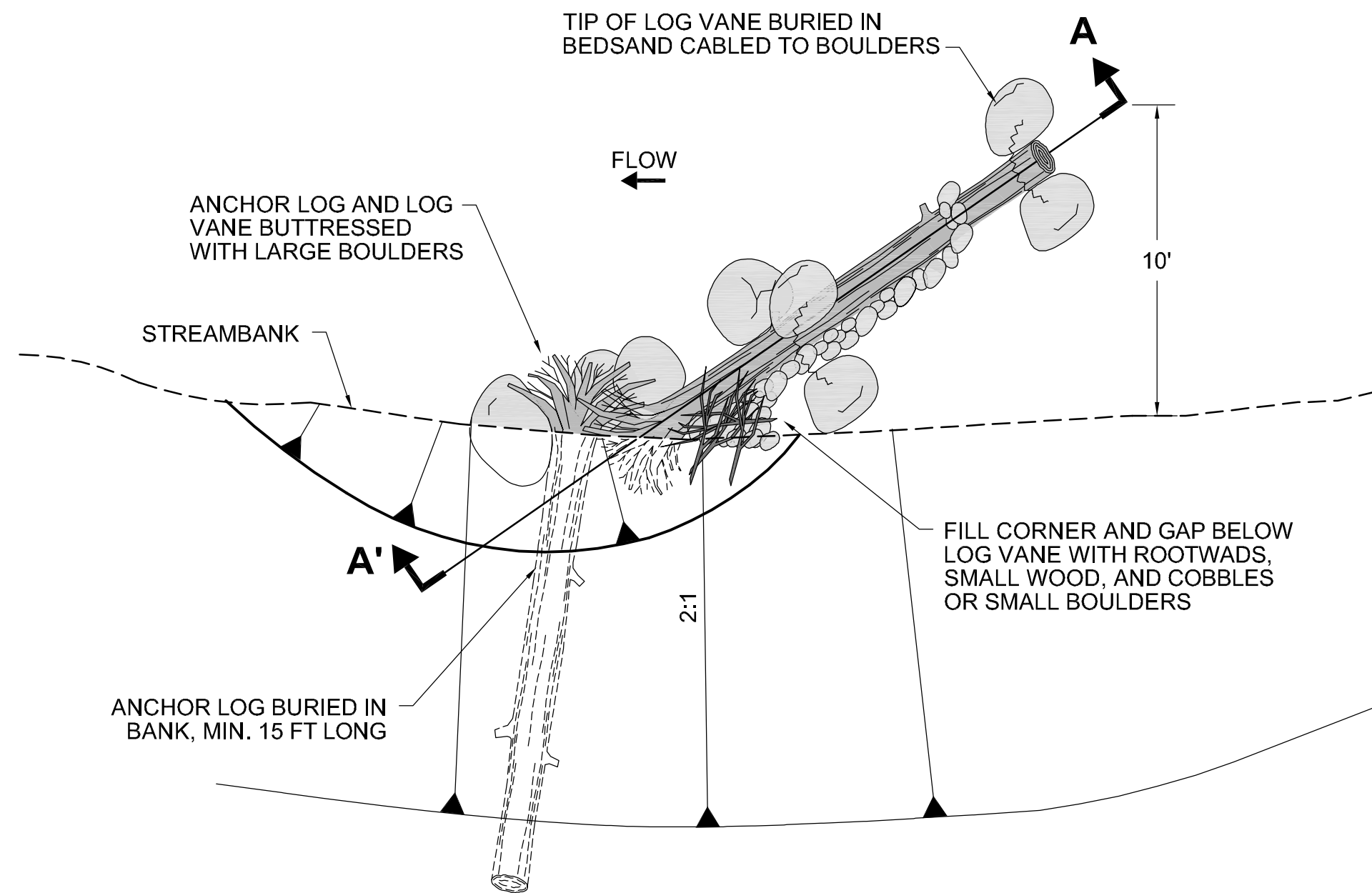
**POOL SECTION (TYP)**  
SCALE: 1" = 20'



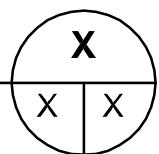
**RIFFLE SECTION (TYP)**  
SCALE: 1" = 20'



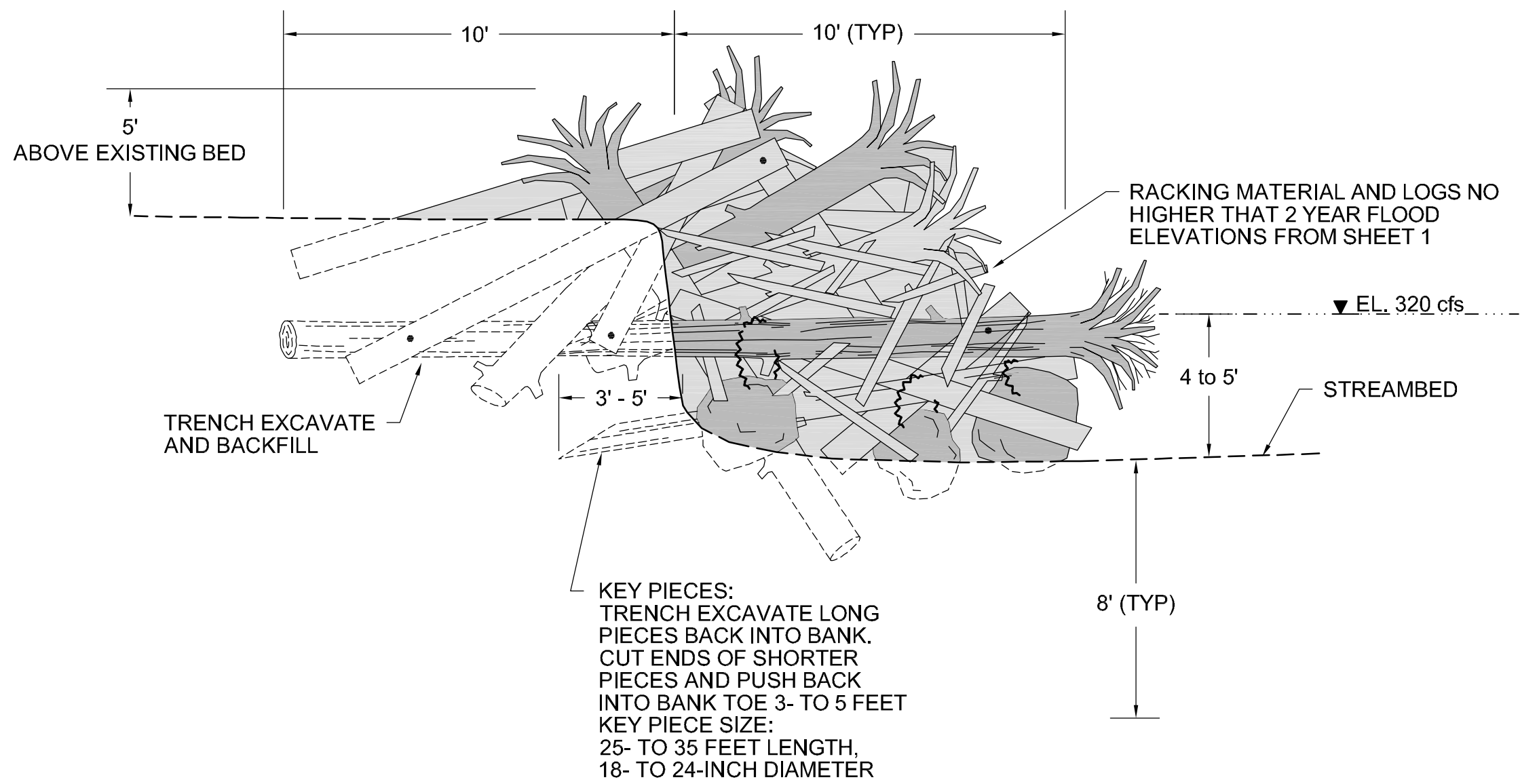
REV	DATE	DESCRIPTION	DRFT	DRWN	CHK'D
EXHIBIT C-X			SHEET 1 of X		
PUBLIC UTILITY DISTRICT NO. 1 OF CHELAN COUNTY WENATCHEE, WASHINGTON					
CHELAN RIVER DETAILED SITE PLAN HABITAT CHANNEL POOLS AND RIFFLES					
FERC. PROJECT NO.: 637			DATE: MARCH 19, 2007		
<div><div><b>ANCHOR</b> ENVIRONMENTAL, L.L.C. 1423 3RD AVENUE, SUITE 300 SEATTLE, WA 98101 (206) 287-9130</div></div>					



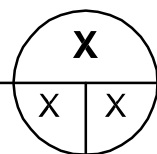
LOG VANE DETAIL PLAN  
SCALE: 1" = 5'



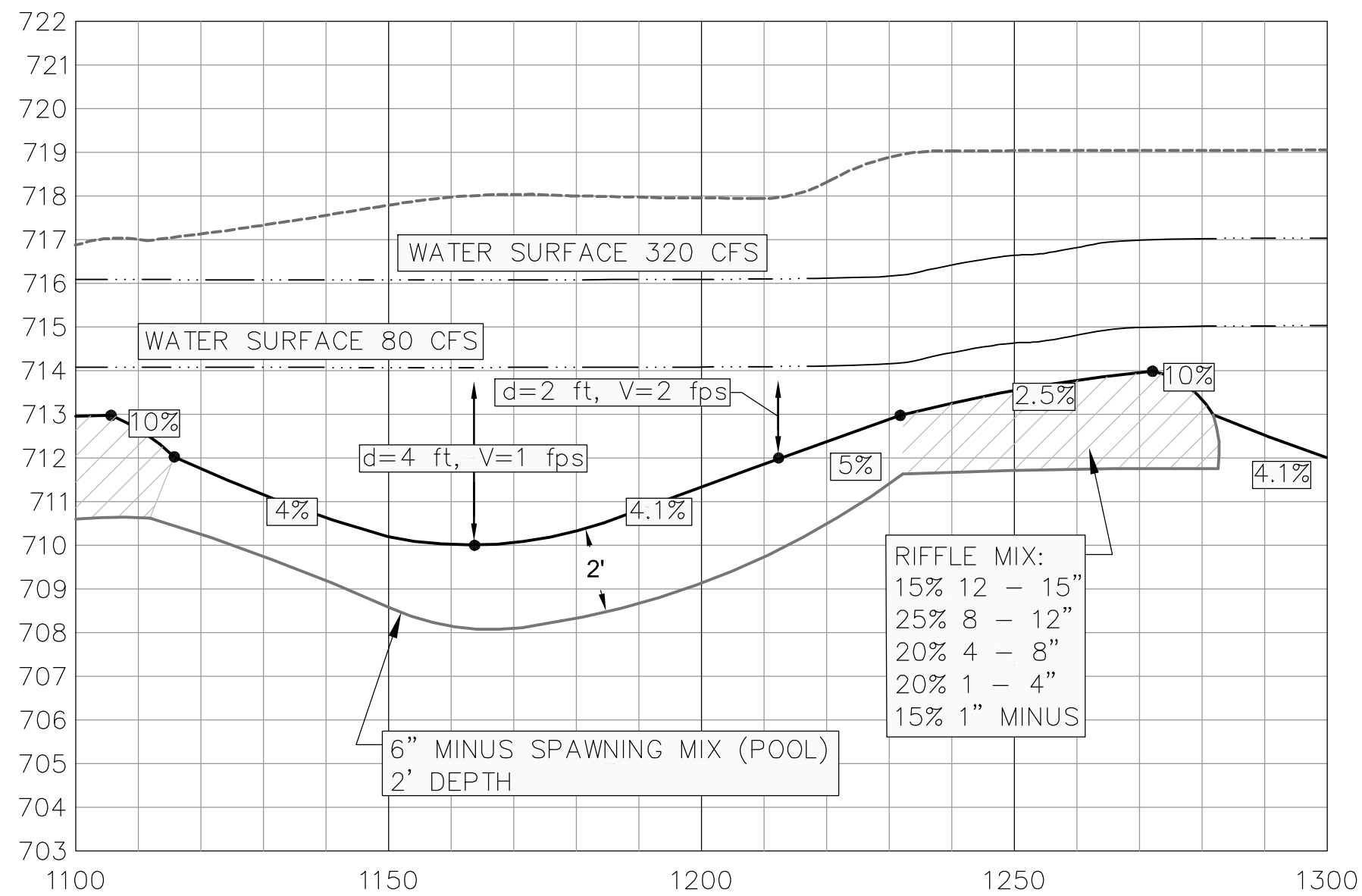
NOTES:  
SHADED PORTIONS INDICATE EXPOSED AREAS.  
NON-SHADED PORTIONS INDICATE BURIED AREAS.



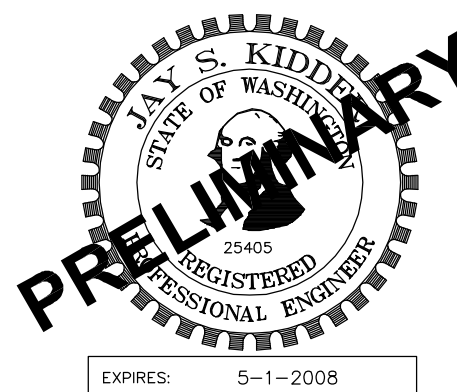
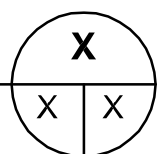
LOG JAM DETAIL SECTION  
SCALE: 1" = 5'



NOTES:  
SHADED PORTIONS INDICATE EXPOSED AREAS.  
NON-SHADED PORTIONS INDICATE BURIED AREAS.



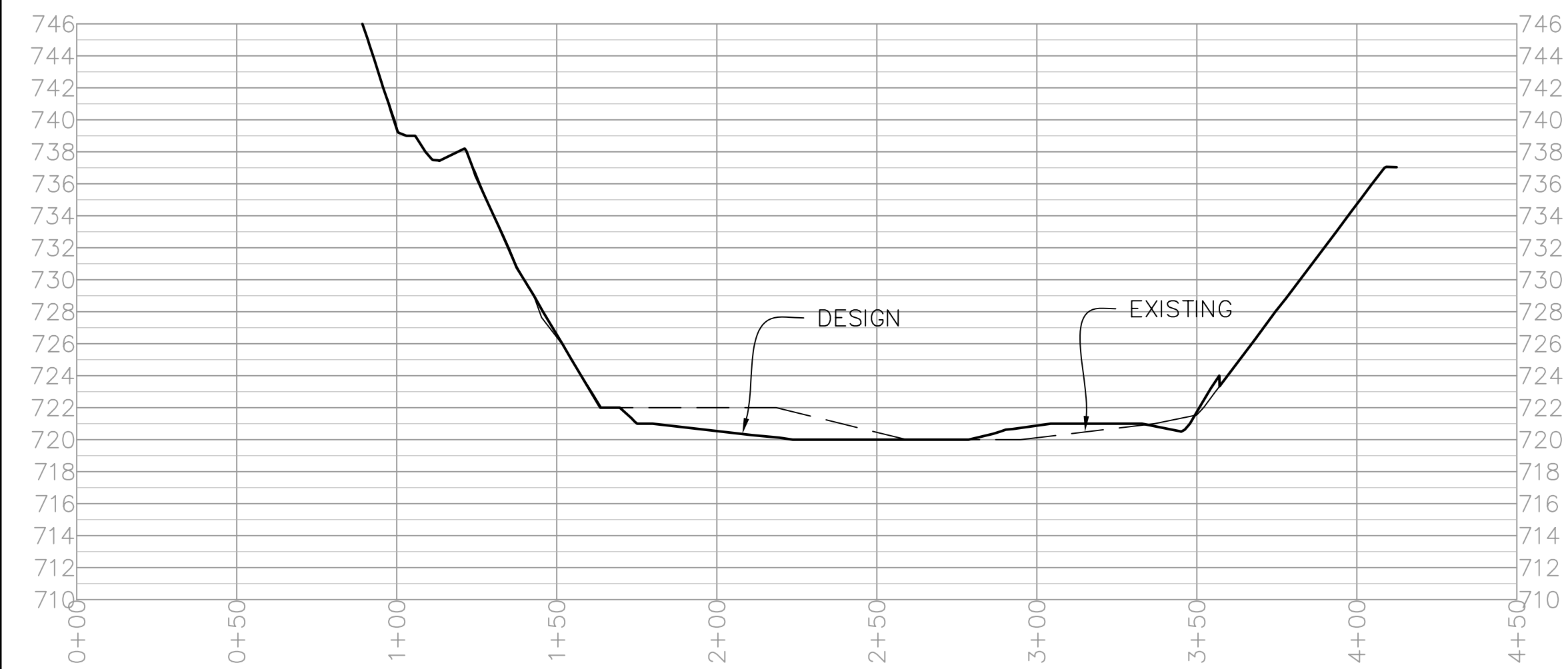
GENERALIZED CHANNEL PROFILE  
NOT TO SCALE



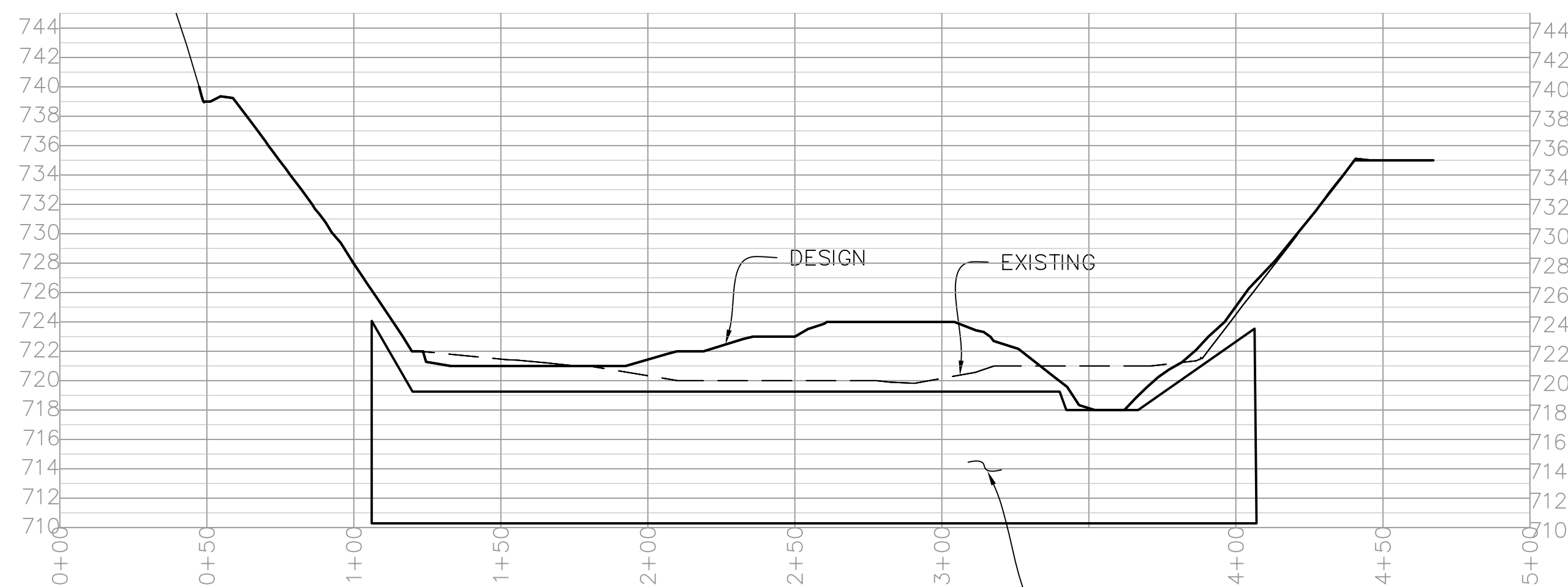
REV	DATE	DESCRIPTION	DRFT	DRWN	CHK'D
EXHIBIT C-X			SHEET 1 OF X		
PUBLIC UTILITY DISTRICT NO. 1 OF CHELAN COUNTY WENATCHEE, WASHINGTON CHELAN RIVER					
PLAN, SECTION, AND DETAIL LOG STRUCTURES					
FERC. PROJECT NO.: 637			DATE: MARCH 19, 2007		

 **ANCHOR**  
ENVIRONMENTAL, L.L.C.  
1423 3RD AVENUE, SUITE 300  
SEATTLE, WA 98101 (206) 287-9130

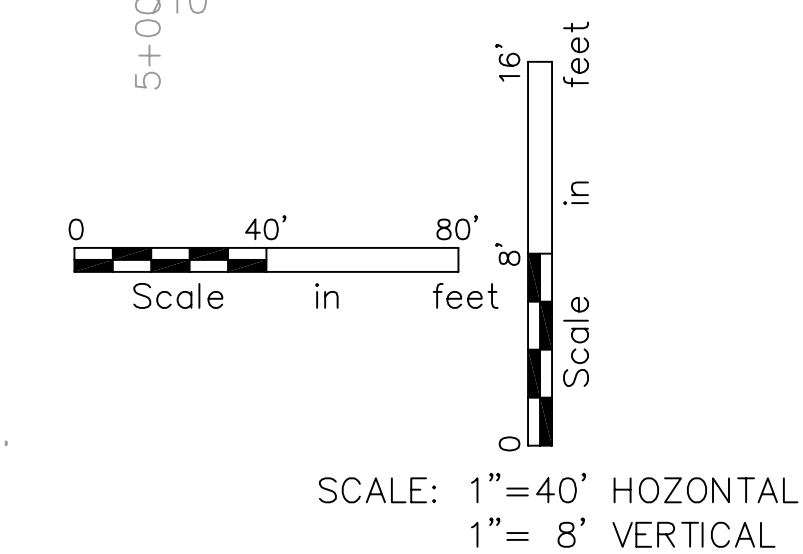




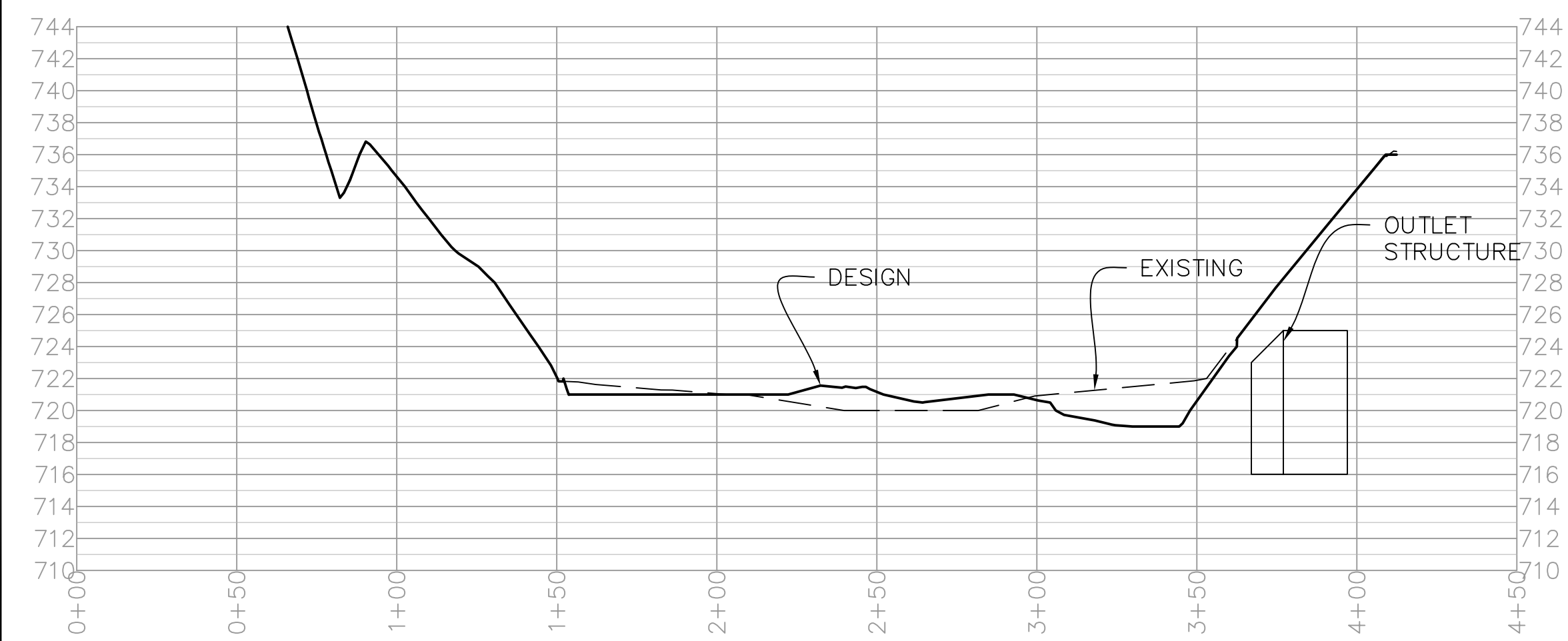
SECTION A



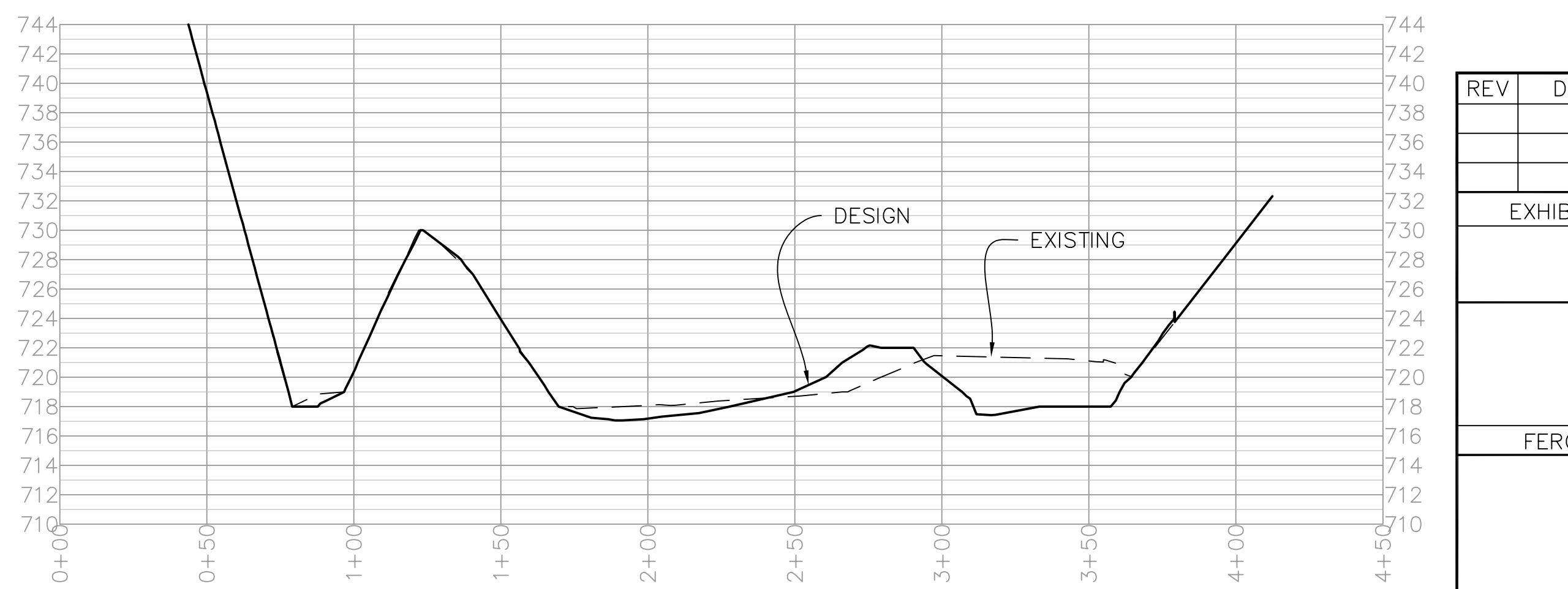
PROFILE C  
HYDRAULIC CONTROL



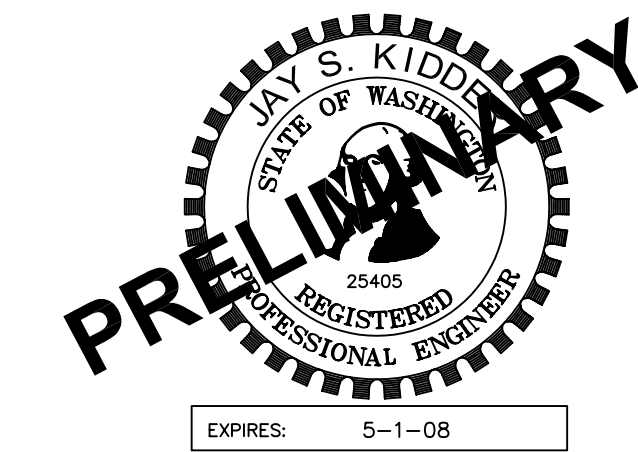
778  
776  
774




SECTION B

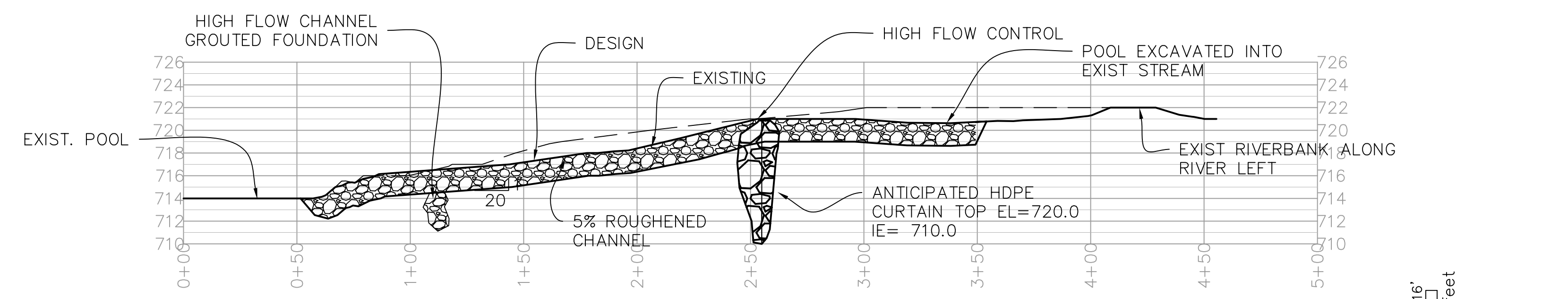


SECTION D

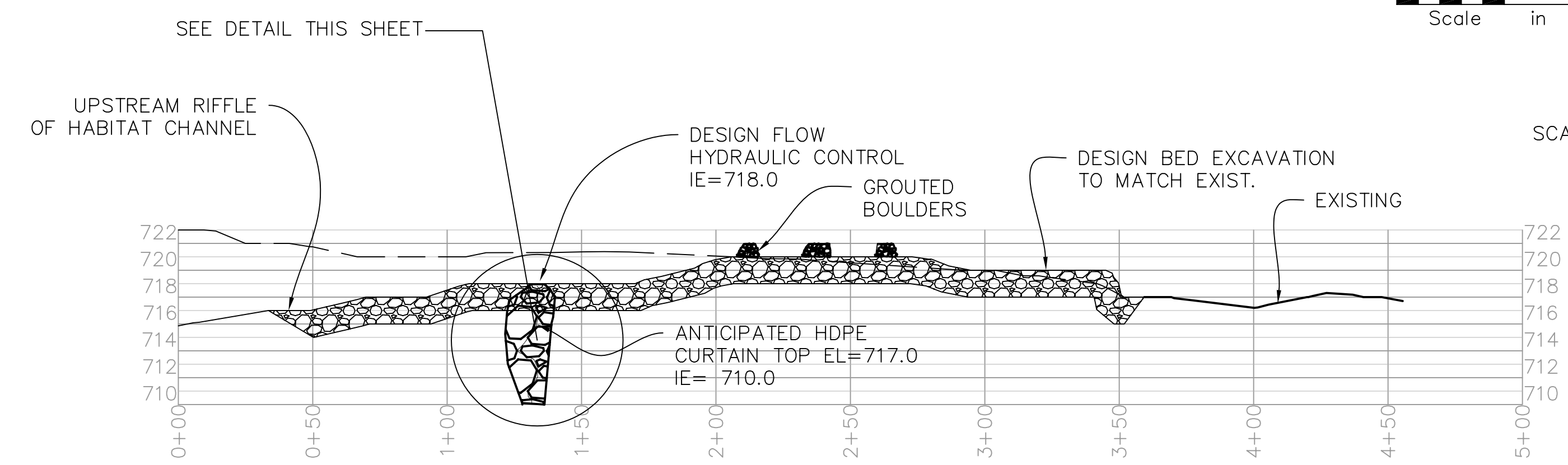
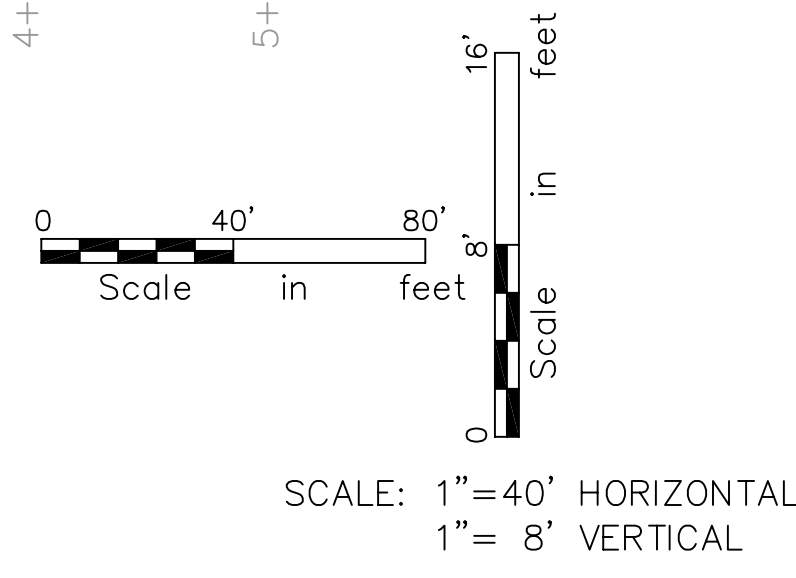


REV	DATE	DESCRIPTION	DRFT	DRWN	CHK'D
EXHIBIT			SHEET		OF
PUBLIC UTILITY DISTRICT NO. 1 OF CHELAN COUNTY WENATCHEE, WASHINGTON					
CHELAN RIVER HYDRAULIC CONTROL STRUCTURE SECTIONS AND DETAILS					
FERC. PROJECT NO.: 637			DATE: 3-19-2007		
 <div>ANCHOR ENVIRONMENTAL, L.L.C. 1423 3RD AVENUE, SUITE 300 SEATTLE, WA 98101 (206) 287-9130</div>					

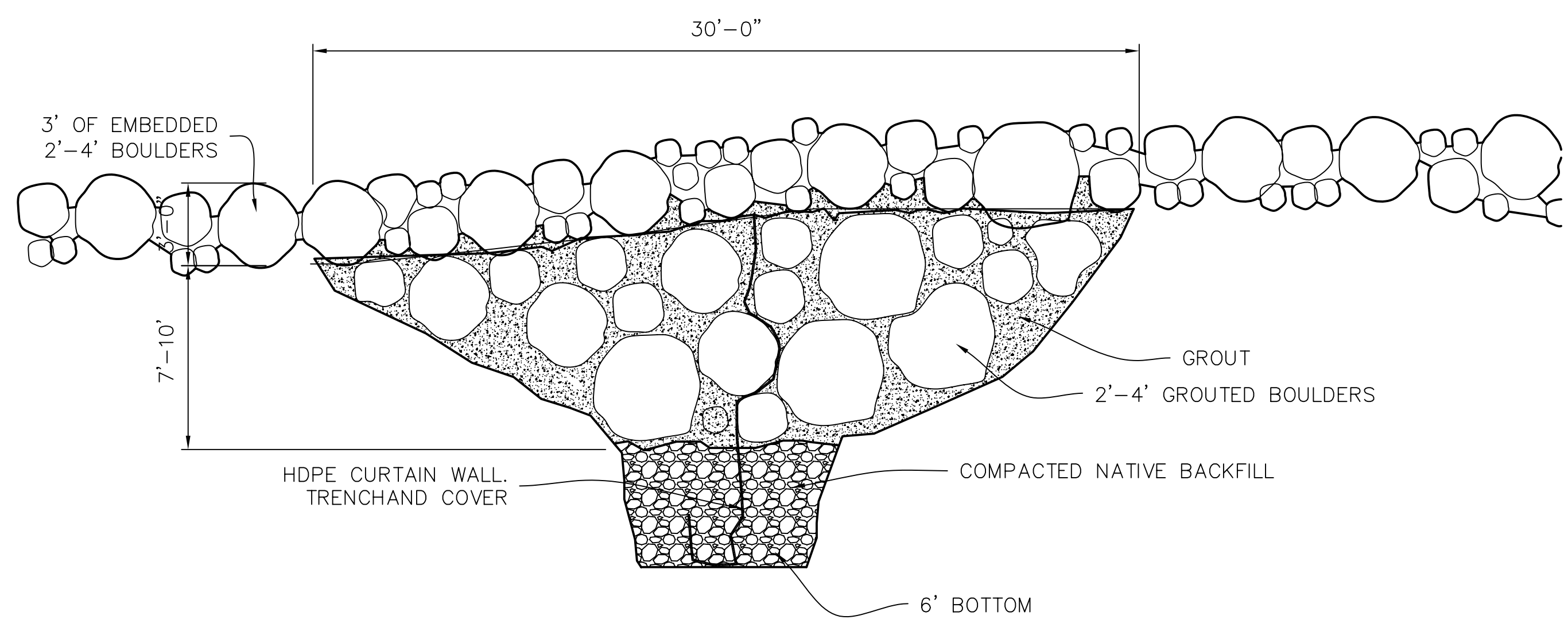




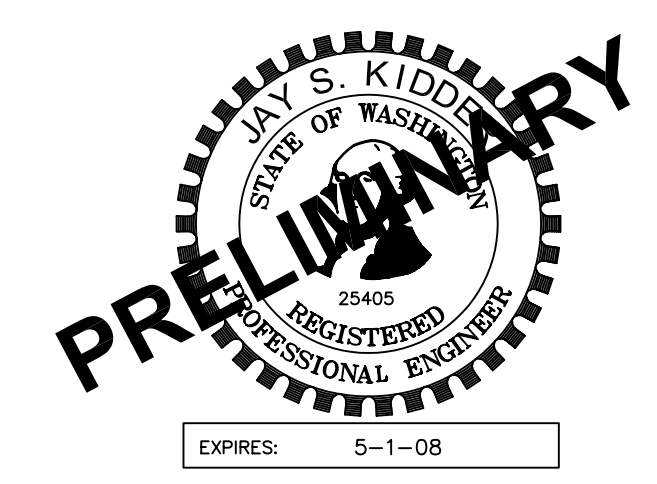
SECTION E




SECTION F



HYDRAULIC CONTROL DETAIL



REV	DATE	DESCRIPTION	DRFT	DRWN	CHK'D
EXHIBIT			SHEET OF		
PUBLIC UTILITY DISTRICT NO. 1 OF CHELAN COUNTY WENATCHEE, WASHINGTON					
CHELAN RIVER HYDRAULIC CONTROL STUCTURE SECTIONS AND DETAILS					
FERC. PROJECT NO.: 637			DATE: 3-19-2007		
<div><div><div>ANCHOR</div><div>ENVIRONMENTAL, L.L.C.</div><div>1423 3RD AVENUE, SUITE 300 SEATTLE, WA 98101 (206) 287-9130</div></div></div>					