



PUBLIC UTILITY DISTRICT NO. 1 of CHELAN COUNTY

P.O. Box 1231, Wenatchee, WA 98807-1231 • 327 N. Wenatchee Ave., Wenatchee, WA 98801

(509) 663-8121 • Toll free 1-888-663-8121 • www.chelanpud.org

VIA ELECTRONIC FILING

March 19, 2012

Honorable Kimberly D. Bose, Secretary, and
Nathaniel J. Davis, Sr., Deputy Secretary
FEDERAL ENERGY REGULATORY COMMISSION
888 First Street, NE
Washington, DC 20426

Re: **Rocky Reach Hydroelectric Project No. 2145**
License Article 403 – Rocky Reach Wildlife Habitat Management Plan (RRWHMP)
Approval of Revised Plan

Dear Secretary Bose and Deputy Secretary Davis:

The Public Utility District No. 1 of Chelan County, Washington (Chelan PUD) hereby files a revised plan for contingency measures needed for implementing the wildlife habitat work pursuant to the Federal Energy Regulatory Commission (Commission's) "*Order Approving Wildlife Habitat Management Plan*"¹ issued on September 22, 2010, for the Rocky Reach Hydroelectric Project (Project).

On behalf of the Rocky Reach Wildlife Forum (RRWF), Chelan PUD is requesting revision of the RRWHMP to address habitat impacts created by recent wildfires on lands adjacent to Project reservoir as described below. (Please see Attachment A for the consultation record.)

On July 10, 2010, a wildfire started in Swakane Canyon immediately northwest of the Project dam burning approximately 20,000 acres of mid- to low-elevation habitat. Portions of land burned in the fire included lands owned by the Bureau of Land Management (BLM) and the USDA Forest Service (Forest Service).

As described in Paragraph 5.c and Paragraph 6.a of the Order, respectively, the BLM proposed shrub planting and the Forest Service proposed a controlled burn to improve habitat quality for mule deer and bighorn sheep in the area. However, the area proposed for habitat management was part of the area burned in the fire. In addition to the wildfire, a subsequent rain event triggered a massive mud slide on August 24, 2010, in Tenas George Canyon, approximately 2-3 miles north of Swakane Canyon. The mud slide caused significant erosion and closed Washington

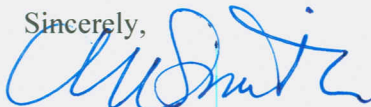
¹ 132 FERC ¶ 62,179 (2010)

State highway 97-A for several days. As a result, the BLM and Forest Service work entails additional weed control and reseeding.

Paragraph 7 of the Order states that if contingency measures are needed, revisions to the plan require approval by the Commission. Therefore, consistent with the habitat restoration portions of the RRWHMP, Chelan PUD and the RRWF propose to amend the RRWHMP to include the projects for the BLM and the Forest Service to benefit the habitats impacted from the Swakane fire and associated mud slide in Texas George Canyon as described in the revised pages 14, 15, 18-20.² Refer to Attachment B to view the tracked changes for these pages. Replace the existing pages of the approved plan with the clean version of the revised pages provided in Attachment C. Please note that some minor revisions to existing work not affected by the wildfire were provided to give a better description of ongoing work.

Chelan PUD and the RRWF hereby respectfully request an expedited review no later than the end of May 2012, as it would be helpful in our effort to begin restoration efforts this summer. Please contact me or Von Pope at (509) 661-4625 if you have any questions regarding this filing or requests for additional information.

Sincerely,



Michelle Smith
Licensing and Compliance Manager
michelle.smith@chelanpud.org
(888) 663-8121, Ext. 4180

Attachment A: Consultation Records
Attachment B: Tracked-Change Versions of Revised Pages 14, 15, 18-20
Attachment C: Clean Version of Revised Pages 14, 15, 18-20

cc: Erich Gaedeke (Commission)
Rocky Reach Wildlife Forum

² Projects proposed do not require maintenance or monitoring to ensure success, rather, all projects are one-time treatments, or a series of activities. Therefore, none of these lands need be incorporated into the Rocky Reach Project boundary.

ATTACHMENT A

Sokolowski, Rosana

From: Bitterman, Deborah
Sent: Monday, March 19, 2012 1:54 PM
To: Sokolowski, Rosana
Subject: FW: Rocky Reach Wildlife Forum Meeting Materials - March 15, 2012
Attachments: RRWF meeting agenda March 15 2012.docx; Noxious Weed IMP for RRWF.docx; Draft RR Wildlife Revision 030612.pdf

Deborah Bitterman | Licensing & Compliance | Chelan County PUD | 509.661.4103
deborah.bitterman@chelanpud.org

-----Original Message-----

From: Pope, Von
Sent: Tuesday, March 06, 2012 3:27 PM
To: 'Andrea Lyons'; Andrew Fielding; 'ARNETT, JOSEPH (DNR)'; Bitterman, Deborah; Bob Huber; 'Brigitte M Ranne'; Cordell-Stine, Kelly; Dave Volsen ; Erik Ellis (edellis@blm.gov); Jack Oelfke (jack_oelfke@nps.gov); James Blanchard; 'Keith Vradenburg'; Ken Finicle; Matt Monda; mboyter@blm.gov; Osborn, Jeff; Pat Irle; Patrick Tonosket; Patrick Verhey; Robert_Kuntz@nps.gov; Ron Fox (ron.fox@dfw.wa.gov); Stephen_Lewis@fws.gov; Tracy Hames
Cc: Smith, Michelle
Subject: Rocky Reach Wildlife Forum Meeting Materials - March 15, 2012

Dear Rocky Reach Wildlife Forum Representatives and Participants,

The next Rocky Reach Wildlife Forum Meeting is scheduled for March 15, 2012 from 1-4 pm here at Chelan PUD. Attached is the agenda, the draft Integrated Noxious Weed Plan, and the draft letter to FERC requesting Wildlife Habitat Plan revision for the BLM and USFS.

Please review the draft plan and letter to the FERC. During the meeting, the RRWF will decide if they support the proposed revisions or not. We will also go over the draft Integrated Noxious Weed Plan and make necessary revisions to this document. This will be the RRWF's Integrated Noxious Weed Plan, so please review the draft document. I look forward to seeing most of you next week.

Please let me know if you have any questions.

Sincerely,

Von

Von R. Pope
Wildlife Programs Manager
Chelan County PUD
509.661-4625

Rocky Reach Wildlife Forum (RRWF) Meeting

Date: March 15, 2012
 Time: 1:00 pm – 4:00 pm
 Location: Chelan PUD Headquarters, Wenatchee, WA
 2nd Floor Conference Room

Call in number: (509)661-4844, Password is 4000.

Meeting called by: Von Pope, Chelan PUD Type of meeting: RRWF Meeting
 Note taker: Deb Bitterman

Representatives

<u>Name</u>	<u>Agency</u>	<u>Phone</u>	<u>Email</u>
Ellis, Erik	BLM	(509) 665-2100	edellis@blm.gov
Fielding, Andrew	WA-Parks	(509) 665-4312	andrew.fielding@parks.wa.gov
Hames, Tracy	YN	(509) 865-5121	tracyhames@yakama.com
Huber, Bob	Alcoa	(509) 664-2193	bob.huber@alcoa.com
Irle, Pat	Ecology	(509) 454-7864	pir1461@ecy.wa.gov
Kuntz, Bob	NPS	(360) 856-5700 x	Bob_Kuntz@nps.gov
Lewis, Steve	USFWS	(509) 665-3508 x14	stephen_lewis@fws.gov
Pope, Von	Chelan PUD	(509) 661-4625	von.pope@chelanpud.org
Tonasket, Patrick	CCT	(509) 634- 2117	Patrick.Tonasket@colvilletribes.com
Volsen, Dave	WDFW	(509) 663-9764	volsedpv@dfw.wa.gov
Vradenburg, Keith	City of Entiat	(509) 784-1500	kvradenburg.city@entiat.org

Participants

<u>Name</u>	<u>Agency</u>	<u>Phone</u>	<u>Email</u>
Verhey, Patrick	WDFW	(509) 754-4624 x 13	Patrick.Verhey@dfw.wa.gov
Monda, Matt	WDFW	(509) 754-4624 x16	mondamjm@dfw.wa.gov
Lenz, Mallory	USDA-FS	(509) 682-4940	mlenz01@fs.fed.us
Lyons, Andrea	USDA-FS	(509) 784-1511	allyons@fs.fed.us
Finicle, Ken	PSE	(425) 462-3117	ken.finicle@pse.com
Boyster, Molly	BLM	(509) 665-2137	molly_boyster@blm.gov
Oelfke, Jack	NPS	(206) 220-4121	Jack_Oelfke@nps.gov
Blanchard, James	USBR	(509) 754-0226	jblanchard@pn.usbr.gov
Osborn, Jeff	Chelan PUD	(509) 661-4176	jeff.osborn@chelanpud.org
Cordell-Stine, Kelly	Chelan PUD	(509) 661-4762	kelly.cordell-stine@chelanpud.org

Meeting Purpose: Meeting of the Rocky Reach Wildlife Forum to continue Rocky Reach license implementation

Agenda

<u>Task</u>	<u>Time</u>	<u>Discussion Lead</u>
Welcome and Introductions	1:00 to 1:05	Jeff Osborn
Review 1/26/2012 Meeting Minutes <ul style="list-style-type: none"> • Approve minutes • Review action items 	1:05 to 1:15	Von Pope
Review Request for Plan Revisions <ul style="list-style-type: none"> • U.S. Bureau of Land Management • USDA Forest Service 	1:15 to 2:00	Forum

- **Decision-** accept or reject proposed revision

Review Draft Integrated Noxious Weed Plan	2:00 to 3:45	Forum
<ul style="list-style-type: none">• Revise and update as needed• Propose projects for 2102		
Public Comment	3:45to 3:50	Jeff Osborn
Next Steps	3:50 to 4:00	Von Pope, Forum
<ul style="list-style-type: none">• Review Action Items• Set next meeting date(s)		

Additional Information

Attachments – Draft letter to FERC with requested revisions, Draft Integrated Noxious Weed Plan

Rocky Reach Wildlife Forum (RRWF) Meeting Minutes

Date: March 15, 2012
Time: 1:00 pm – 4:00 pm
Location: Chelan PUD Headquarters, Wenatchee, WA
2nd Floor Conference Room

Call in number: (509)661-4844, Password is 4000.

Meeting called by: Von Pope, Chelan PUD Type of meeting: RRWF Meeting
Note taker: Deb Bitterman

Representatives

<u>Name</u>	<u>Agency</u>	<u>Phone</u>	<u>Email</u>
Ellis, Erik	BLM	(509) 665-2100	edellis@blm.gov
Fielding, Andrew	WA-Parks	(509) 665-4312	andrew.fielding@parks.wa.gov
Hames, Tracy	YN	(509) 865-5121	tracyhames@yakama.com
Huber, Bob	Alcoa	(509) 664-2193	bob.huber@alcoa.com
Irle, Pat	Ecology	(509) 454-7864	pir1461@ecy.wa.gov
Kuntz, Bob	NPS	(360) 856-5700 x	Bob_Kuntz@nps.gov
Lewis, Steve	USFWS	(509) 665-3508 x14	stephen_lewis@fws.gov
Pope, Von	Chelan PUD	(509) 661-4625	von.pope@chelanpud.org
Tonasket, Patrick	CCT	(509) 634- 2117	Patrick.Tonasket@colvilletribes.com
Volsen, Dave	WDFW	(509) 663-9764	volsedpv@dfw.wa.gov
Vradenburg, Keith	City of Entiat	(509) 784-1500	kvradenburg.city@entiat.org

Participants

<u>Name</u>	<u>Agency</u>	<u>Phone</u>	<u>Email</u>
Verhey, Patrick	WDFW	(509) 754-4624 x 13	Patrick.Verhey@dfw.wa.gov
Monda, Matt	WDFW	(509) 754-4624 x16	mondamjm@dfw.wa.gov
Lenz, Mallory	USDA-FS	(509) 682-4940	mlezn01@fs.fed.us
Lyons, Andrea	USDA-FS	(509) 784-1511	allyons@fs.fed.us
Finicle, Ken	PSE	(425) 462-3117	ken.finicle@pse.com
Boyster, Molly	BLM	(509) 665-2137	molly_boyster@blm.gov
Oelfke, Jack	NPS	(206) 220-4121	Jack_Oelfke@nps.gov
Blanchard, James	USBR	(509) 754-0226	jblanchard@pn.usbr.gov
Osborn, Jeff	Chelan PUD	(509) 661-4176	jeff.osborn@chelanpud.org
Cordell-Stine, Kelly	Chelan PUD	(509) 661-4762	kelly.cordell-stine@chelanpud.org
McCarty, Jesse	USDA-FS		jmccarty@fs.fed.us
Brigitte, Ranne	USDA-FS	(509) 784-1511	branne@fs.fed.us
Fox, Ron	WDFW	(509) 665-3383	Ron.fox@dfw.wa.gov

Attendees in BOLD

Meeting Purpose: Meeting of the Rocky Reach Wildlife Forum to continue Rocky Reach license implementation

Minutes

Jeff Osborn was not able to attend due to illness; Von Pope will act as Chair.

Von Pope reviewed the agenda with the Rocky Reach Wildlife Forum (RRWF) and asked if the RRWF had any additions or corrections to the agenda. There were no additions or corrections to the agenda.

Von reviewed the 26 January 2012 meeting minutes with the RRWF. The minutes were approved.

Review Request for Plan Revisions

The RRWF reviewed the draft submittal to FERC requesting revision of the Rocky Reach Wildlife Habitat Management Plan to address habitat impacts created by recent wildfires on lands adjacent to the Project reservoir. Von noted that USFS and BLM have proposed alternate habitat restoration projects within the fire area. However, since these projects were not in the current Plan, an amendment for FERC approval is necessary.

Bob Huber questioned if the revision also included an increase in budget. Von confirmed that this did not increase the budget; the work is in the project budget schedule. It will be the same annual amount as stated in the Settlement Agreement. The agencies meet bi-annually to review their project budgets.

Bob Huber inquired whether developing a spring in Swakane-2 for a water source for wildlife was still on the project implementation schedule. Erik Ellis confirmed that spring development project was on the implementation schedule but that the schedule was revised in the amendment.

After discussion, Von called for a vote on the proposed revised plan. All attendees were in support of filing with FERC a revised plan for contingency measures needed for implementing the wildlife habitat work.

Andrea Lyons asked how frequently amendments could be made to the Wildlife Plan. Von Pope suggested that the RRWF not consider any additional amendments until the current amendment was processed. It is Chelan PUD's opinion that frequent amendments would not be well received by the FERC.

This discussion brought up the fact that the current FERC approved Rocky Reach Wildlife Habitat Management Plan expires in September of 2015. The current payment agreements for USFW, WDFW, and BLM will also expire around then. In order to continue implementing projects beyond September of 2015, the RRWF will need to submit a new 5-year plan. Since the FERC review and approval can take up to 9 months or more, the new plan should be submitted in late 2014 or early 2015 to ensure sufficient time for FERC approval. Therefore, the agencies with funding will need to provide budgets and schedules for proposed projects in early-mid 2014 to be included in a draft plan that will need RRWF approval before being submitted to the FERC. Agency Payment Agreements will need to be updated to reflect the projects and budgets for the new Plan.

Review Draft Integrated Noxious Weed Plan

The RRWF reviewed and provided comments regarding the draft Integrated Noxious Weed Plan. Von will send requested changes to the RRWF for their final review and approval.

Von noted that he has contacted Steve Lewis regarding the plan. Steve has the plan to review, but at this time, Chelan PUD has not received any comments from him.

Payment for work authorized and executed would need RRWF approval. Rather than have these projects be included in the current payment agreements, the PUD would do the work or hire a contractor to complete the work on behalf of the RRWF. The RRWF would need to approve invoicing to the contractor or PUD before payment.

Jesse McCarty asked how much money was available to the RRWF for weed control in 2012. Currently, approximately \$30,000 have accrued for this task. Von Pope said the District did not budget beyond that amount and asked the group to keep the cost below \$30,000.

Next Steps

15 March 2012: Kelly will add cereal rye to the table in Appendix A and email the list of priority weed concerns rating spreadsheet to the RRWF for rating input.

23 March 2012: RRWF will send their completed ratings to Von.

30 March 2012: Von will incorporate ratings into draft Rocky Reach Wildlife Area Integrated Noxious Weed Control Plan and email to RRWF for their final review and comments.

11 April 2012: RRWF will email their comments and 2012 project proposal(s) to Von

12 April 2012: Von will incorporate all comments and email draft Weed Control Plan to RRWF

18 April 2012: Potential RRWF meeting to finalize draft, if necessary.

Action Item:

- Von will email the GIS shape files for the RRWA buffer to Ron Fox and Jesse McCarty.
- Kelly will email the spreadsheet containing Appendix A (rating) to the agencies (Erik Ellis, Brigitte Ranne, Ron Fox).

ATTACHMENT B

4.2 Habitat Restoration on BLM Lands

The Bureau of Land Management (BLM) ~~is responsible for~~ administers approximately ~~12,000~~ 7,400 acres within ~~the 6–six miles~~ corridor of the ~~Rocky Reach Reservoir, Columbia River in Chelan County upstream from the Wenatchee River confluence.~~ These lands are relatively low elevation ranging from 750 – 3200 feet. Shrub-steppe habitat with an over-story of sagebrush or bitterbrush and an under-story of various grasses and forbs are most common on these lands. Some mesic sites, which are often found at higher elevation or on north exposures, support conifers. Riparian areas support a mixture of deciduous shrubs and trees as well as conifers. Much of the area has burned during the past 15 years. In most cases, these recently burned areas support fewer trees and shrubs and more grasses and forbs. Some burned areas have been invaded by exotic species and support little native vegetation. ~~About half~~ Much of the BLM lands in this area are considered part of the Swakane, Entiat or Chelan Butte Wildlife Units which comprise the CWA (Chelan Wildlife Area).

For this plan, treatments will occur on the west side of the Columbia River in Chelan County. ~~¶~~ The BLM-administered lands were divided into ~~3–three~~ Areas: Azwell (Figure 5), from the Okanogan County line south to Chelan; Chelan Butte (Figure 6), from Chelan to Entiat; and Swakane (Figure 7) from Entiat south to the Wenatchee River. Detailed descriptions of the projects to be implemented by Chelan PUD are shown in Table 2 below⁴.

- 1) **Azwell** (approximately ~~4,500–686~~ acres)
 - Planting containerized ~~bitterbrush and blue elderberry~~ native shrubs in 5 units totaling approximately 473 acres.
 - Develop a spring to provide water for mule deer and bighorn sheep south of Deer Mountain in Section 8.
 - Control noxious weeds
- 2) **Chelan Butte** (approximately ~~3,380–334~~ acres (within Chelan Butte and Entiat Wildlife Units))
 - Restoring native shrub-steppe plant communities on approximately 25–21 acres of agricultural land on Chelan Butte (to be coordinated with WDFW field restoration).
 - Control noxious weeds
 - Potentially planting bitterbrush and other native browse species on 244 acres. These plantings are not proposed to occur during the first 5 years.
- 3) **Swakane** (approximately ~~52,772–436~~ acres (within the Entiat and Swakane Wildlife Units))
 - Developing a spring near Tenas George Canyon and Swakane Creek to provide water for mule deer and bighorn sheep.
 - **FIRE REHAB TREATMENT:** Planting containerized native shrubs and grasses in portions of Units 1 and 2 totaling approximately 500 acres.
 - **FIRE REHAB TREATMENT:** ~~Developing a spring near Tenas George Canyon and Swakane Creek to provide water for mule deer and bighorn sheep.~~
 - Controlling noxious weeds in Units 1 and 2.

⁴Projects proposed do not require maintenance or monitoring to ensure success, rather, all projects are one-time treatments, or a series of activities (see Table 2). Therefore, none of these lands need be incorporated into the Rocky Reach Project boundary.

Table 1: Implementation Schedule for Proposed BLM Projects within the RRWA (Swakane, Azwell, and Chelan Butte Areas).

Year	Project	Area-Unit	Activity	Purpose
2011	Planning, Clearances Weed management	All/AH	Payment Agreement, Chelan Butte Field Section 106 Weed management on 100 acres	Project Permitting Improve habitat quality
2012	Planning, Clearances	All	NEPA, Section 106	Project Permitting
2012	Weed Management	All	Weed management on 100 acres	Improve habitat quality
2012	Field restoration Field restoration	Chelan Butte- 1 Chelan Butte	Consistent with WDFW restoration on CWA Consistent with WDFW restoration on CWA	Restore abandoned fields Restore abandoned fields
1	Develop a spring	Swakane-2	Develop a spring	Water source for wildlife
1	Shrub planting	Azwell-1-2	Bitterbrush and elderberry/planting	Increase available browse
2012	Shrub planting	Swakane-2,3 (Burn Area)	Bitterbrush and elderberry/planting	Fire Rehab/Increase available browse
2012	Weed management	All	Weed management on 100 acres	Improve habitat quality
2012	Field restoration	Chelan Butte-1	Consistent with WDFW restoration on CWA	Restore abandoned fields
2013	Develop a spring	Swakane-2	Develop a spring	Water source for wildlife
2	Develop a spring	Azwell-3	Develop a spring	Water source for wildlife
2012	Shrub planting	Azwell Swakane- 2,3 (Burn Area) 3	Bitterbrush and elderberry/planting	Fire Rehab/Increase available browse
2013	Weed management	All	Weed management on 100 acres	Improve habitat quality
2013	Field restoration	Chelan Butte-1	Consistent with WDFW restoration on CWA	Restore abandoned fields
2014	Develop a spring	Azwell-3	Develop a spring	Water source for wildlife
2013	Shrub planting	Azwell-1,3,2,3	Bitterbrush and elderberry/planting	Increase available browse
2014	Weed management	All	Weed management on 100 acres	Improve habitat quality
2014	Field restoration	Chelan Butte-1	Consistent with WDFW restoration on CWA	Restore abandoned fields
2014	Shrub planting	Azwell-4,5	Bitterbrush and elderberry/planting	Increase available browse
5	Weed management	All	Weed management on 100 acres	Improve habitat quality
5	Shrub planting	Azwell-5	Bitterbrush and elderberry/planting	Increase available browse
5	Field restoration	Chelan Butte	Consistent with WDFW restoration on CWA	Restore abandoned fields

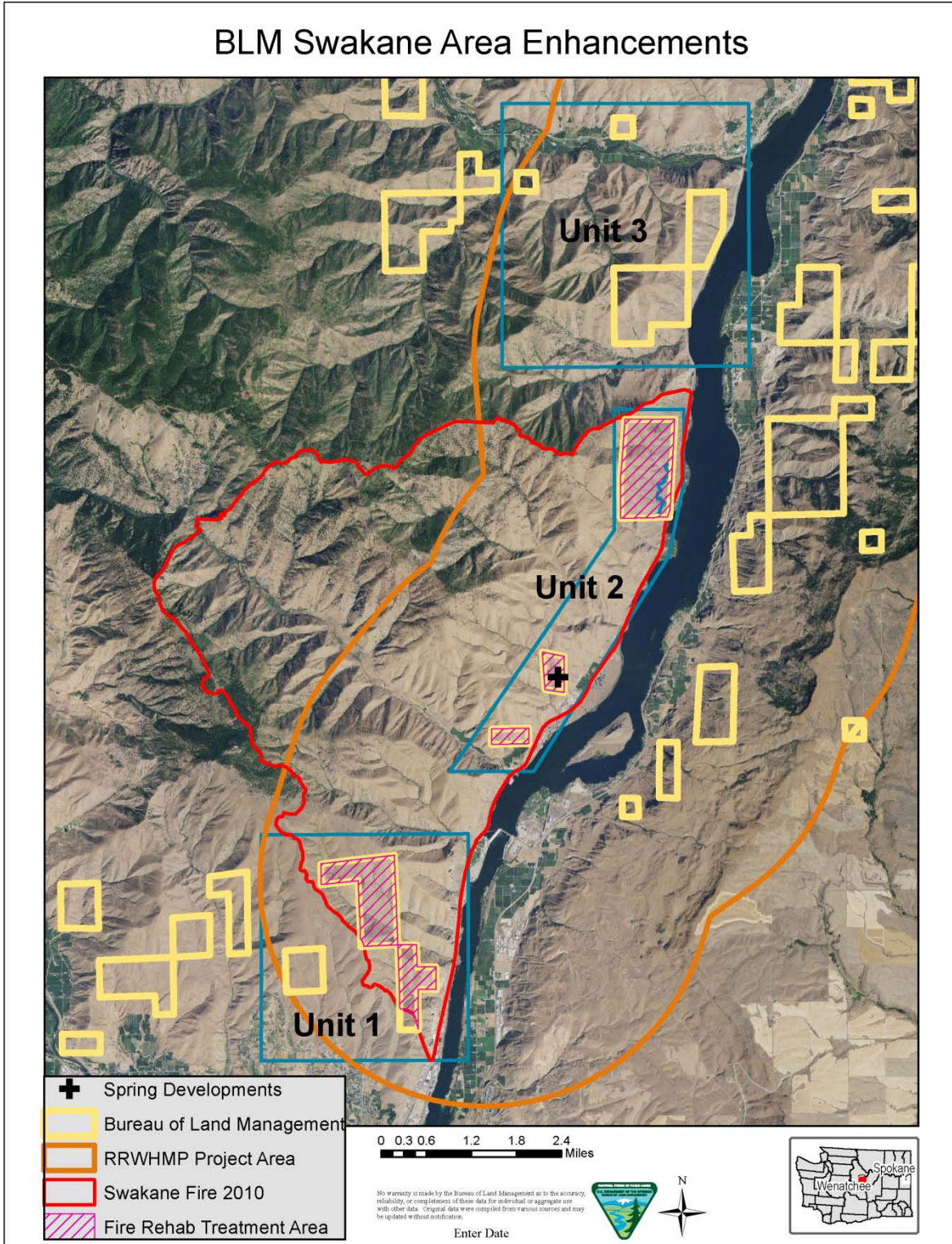


Figure 7: Swakane Area Habitat Projects, BLM. (Revised March 16, 2012)

4.3 Habitat Restoration on USDA Forest Service Lands

Chelan PUD will assist the USDA Forest Service by implementing the following proposed projects⁵ on the Entiat Ranger District, Okanogan and Wenatchee National Forests. 2010 – 2015 adjacent to the Rocky Reach project (Figure 8).

1) Mule Deer and Bighorn Sheep Key Winter Range Habitat Restoration—

Improve mule deer and bighorn sheep winter range within the Swakane ~~Creek drainage~~subwatershed with a combination of slash thinning and/or prescribed fire. There are approximately 700 acres of forested stands (non-contiguous) in different areas within the Swakane drainage that would benefit from treatment. Portions of the thinning units are outside of the RRWA boundary. However, they are within the same drainage within key winter range and will be beneficial to the animals using that drainage in the winter. These treatments would likely be implemented over a 3 year time period, beginning in the fall of 2010.

- Approximately 400 acres prescribed burning
- Approximately 300 acres slash thinning

2) Ungulate Mineral Supplements

Ungulate mortality as a result of collisions with vehicles is an ongoing issue on State Highway 97A, especially in the winter and early spring. Bighorn sheep and mule deer are repeatedly observed licking the road surface during the winter after application of de-icer on the roadway. We propose to coordinate with WDFW to develop a strategy to test a mineral supplement for wild ungulates. The supplement will be deployed (via helicopter) in locations within the winter range to decrease the need for these animals to go down to the highway in the winter.

3) Weed Control

Noxious weed management on ungulate winter range in the Rocky Reach Wildlife Area (specifically Swakane, Spencer and Tenas George drainages) is an ongoing effort by the USFS. Noxious weed control measures include application of herbicide or biocontrols, hand-pulling and seeding to discourage weed recolonization.—Weed control is an essential mitigation to prescribed fire and enhances desired forage production. Weed control on winter range would benefit mule deer and bighorn sheep, as well as carnivores dependent on these ungulates, and other species dependent on shrub-steppe and grassland habitats.

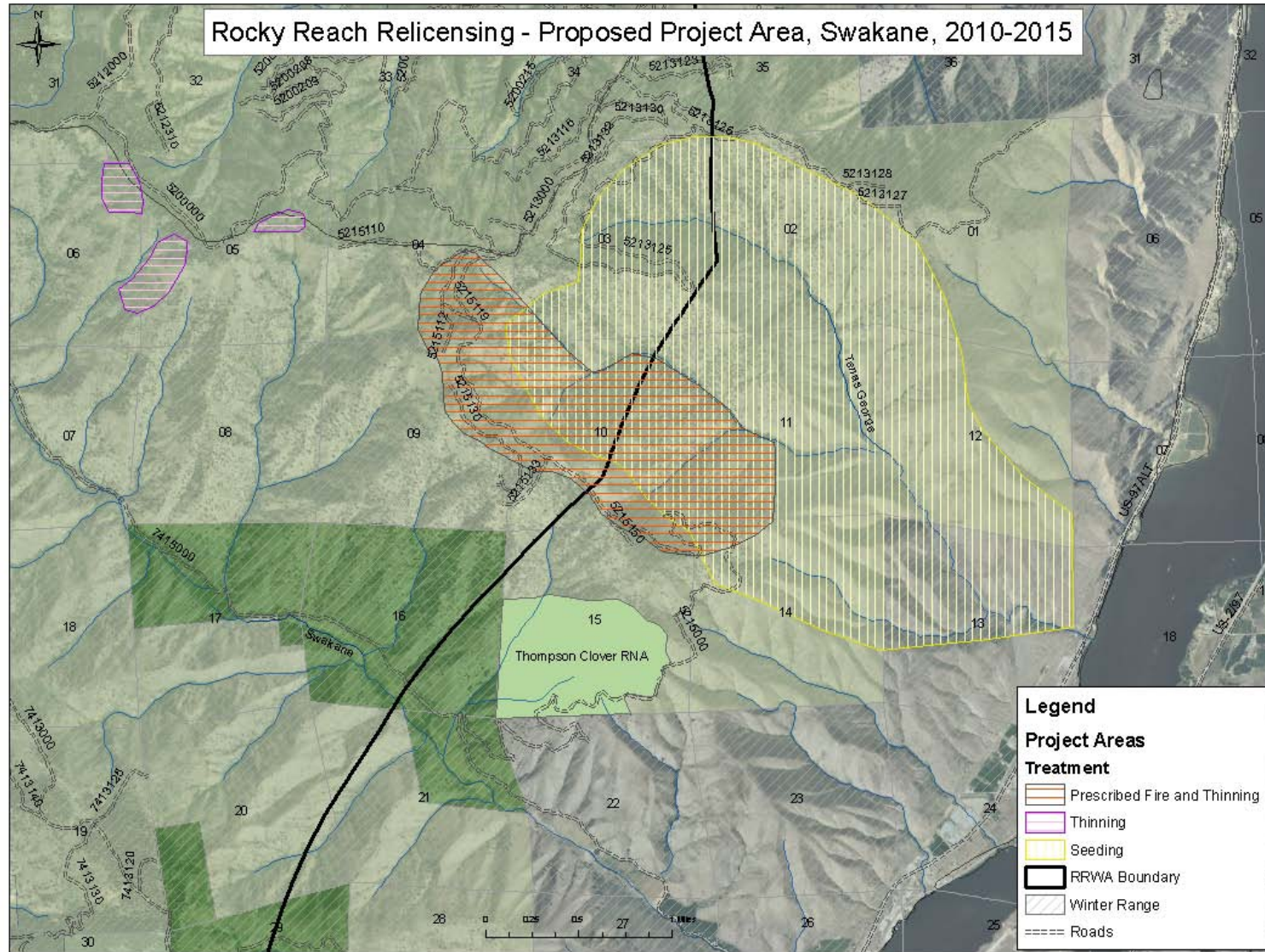
4) Tenas George Washout Seeding

The Swakane Fire and subsequent weather events resulted in a mudslide that affected the main draw and side-channels in the Tenas George drainage in August 2010. The washout created patches of exposed soil and a subsequent noxious weed infestation in the RRWA. The area would benefit from reseeding to prevent further erosion and to mitigate the weeds. This work would include hand-pulling of noxious weeds and application of native grass seed within the affected areas of the Tenas George Drainage.

Contingency Planning

1) Accomplishing the projects listed above depends a great deal on environmental factors and funding. As such, we have included additional contingency projects in case factors, such as wildfire, weather, etc., prevent accomplishment of the above. Chelan PUD will assist the USFS to decommission roads closed by the USFS and/or thinning and prescribed burning within key mule deer winter range north of the Entiat (ie. near Osburn Canyon, Crum Canyon, etc.). If contingency measures are needed Chelan PUD will revise the plan for Commission approval.

⁵—Projects proposed do not require maintenance or monitoring to ensure success, rather, all projects are one-time treatments, or a series of activities (see Table 3). Therefore, none of these lands need be incorporated into the Rocky Reach Project boundary.



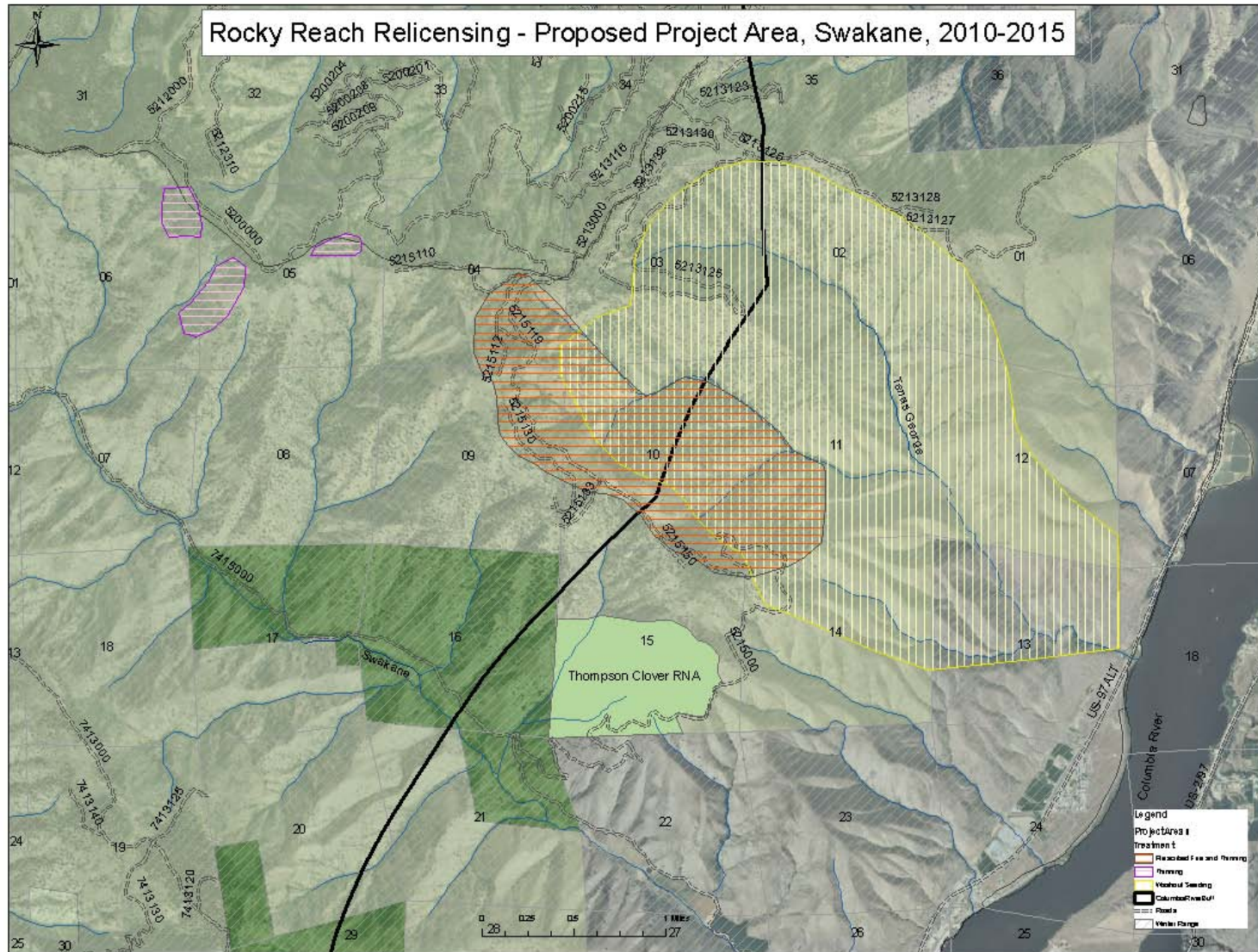


Figure 8: USFS Entiat Ranger District Habitat Improvement Projects, 2010-2015 (Revised March 16, 2012)

ATTACHMENT C

4.2 Habitat Restoration on BLM Lands

The Bureau of Land Management (BLM) administers approximately 17,400 acres within the six mile corridor of the Rocky Reach Reservoir. These lands are relatively low elevation ranging from 750 – 3200 feet. Shrub-steppe habitat with an over-story of sagebrush or bitterbrush and an under-story of various grasses and forbs are most common on these lands. Some mesic sites, which are often found at higher elevation or on north exposures, support conifers. Riparian areas support a mixture of deciduous shrubs and trees as well as conifers. Much of the area has burned during the past 15 years. In most cases, these recently burned areas support fewer trees and shrubs and more grasses and forbs. Some burned areas have been invaded by exotic species and support little native vegetation. Much of the BLM lands in this area are considered part of the Swakane, Entiat or Chelan Butte Wildlife Units which comprise the CWA (Chelan Wildlife Area).

For this plan, treatments will occur on the west side of the Columbia River in Chelan County. The BLM-administered lands were divided into three areas: Azwell (Figure 5), from the Okanogan County line south to Chelan; Chelan Butte (Figure 6), from Chelan to Entiat; and Swakane (Figure 7) from Entiat south to the Wenatchee River. Detailed descriptions of the projects to be implemented by Chelan PUD are shown in Table 2 below⁴.

- 1) **Azwell** (approximately 4,686 acres)
 - Planting containerized native shrubs in 5 units totaling approximately 473 acres.
 - Develop a spring to provide water for mule deer and bighorn sheep south of Deer Mountain in Section 8.
 - Control noxious weeds
- 2) **Chelan Butte** (approximately 3,334 acres within Chelan Butte and Entiat Wildlife Units)
 - Restoring native shrub-steppe plant communities on approximately 21 acres of agricultural land on Chelan Butte (to be coordinated with WDFW field restoration).
 - Control noxious weeds
 - Potentially planting bitterbrush and other native browse species on 244 acres. These plantings are not proposed to occur during the first 5 years.
- 3) **Swakane** (approximately 2,436 acres within the Entiat and Swakane Wildlife Units)
 - Developing a spring near Tenas George Canyon and Swakane Creek to provide water for mule deer and bighorn sheep.
 - **FIRE REHAB TREATMENT:** Planting containerized native shrubs and grasses in portions of Units 1 and 2 totaling approximately 500 acres.
 - **FIRE REHAB TREATMENT:** Controlling noxious weeds in Units 1 and 2.

⁴Projects proposed do not require maintenance or monitoring to ensure success, rather, all projects are one-time treatments, or a series of activities (see Table 2). Therefore, none of these lands need be incorporated into the Rocky Reach Project boundary.

Table 1: Implementation Schedule for Proposed BLM Projects within the RRWA (Swakane, Azwell, and Chelan Butte Areas).

Year	Project	Area-Unit	Activity	Purpose
2011	Planning, Clearances	All	Payment Agreement, Chelan Butte Field Section 106	Project Permitting
2012	Planning, Clearances	All	NEPA, Section 106	Project Permitting
2012	Weed Management	All	Weed management on 100 acres	Improve habitat quality
2012	Field restoration	Chelan Butte-1	Consistent with WDFW restoration on CWA	Restore abandoned fields
2012	Shrub planting	Swakane-2,3 (Burn Area)	Bitterbrush and elderberry/planting	Fire Rehab/Increase available browse
2013	Weed management	All	Weed management on 100 acres	Improve habitat quality
2013	Field restoration	Chelan Butte-1	Consistent with WDFW restoration on CWA	Restore abandoned fields
2013	Develop a spring	Swakane-2	Develop a spring	Water source for wildlife
2013	Shrub planting	Swakane-2,3 (Burn Area)	Bitterbrush and elderberry/planting	Fire Rehab/Increase available browse
2014	Weed management	All	Weed management on 100 acres	Improve habitat quality
2014	Field restoration	Chelan Butte-1	Consistent with WDFW restoration on CWA	Restore abandoned fields
2014	Develop a spring	Azwell-3	Develop a spring	Water source for wildlife
2014	Shrub planting	Azwell-1,2,3	Bitterbrush and elderberry/planting	Increase available browse
2015	Weed management	All	Weed management on 100 acres	Improve habitat quality
2015	Field restoration	Chelan Butte-1	Consistent with WDFW restoration on CWA	Restore abandoned fields
2015	Shrub planting	Azwell-4,5	Bitterbrush and elderberry/planting	Increase available browse

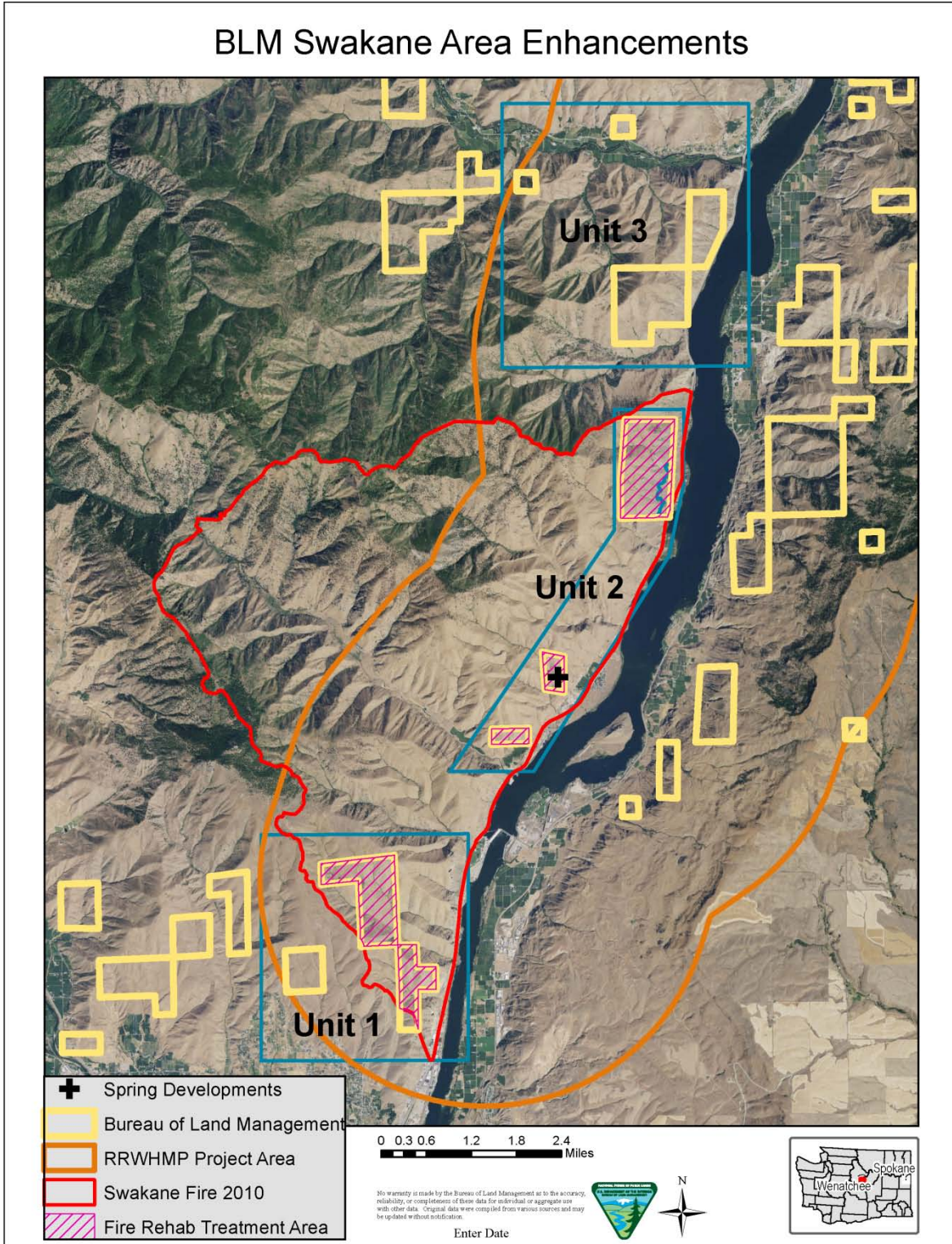


Figure 7: Swakane Area Habitat Projects, BLM. (Revised March 16, 2012)

4.3 Habitat Restoration on USDA Forest Service Lands

Chelan PUD will assist the USDA Forest Service by implementing the following proposed projects⁵ on the Entiat Ranger District, Okanogan and Wenatchee National Forests. 2010 – 2015 adjacent to the Rocky Reach project (Figure 8).

1) Mule Deer and Bighorn Sheep Key Winter Range Habitat Restoration–

Improve mule deer and bighorn sheep winter range within the Swakane subwatershed with a combination of slash thinning and/or prescribed fire. There are approximately 700 acres of forested stands (non-contiguous) in different areas within the Swakane drainage that would benefit from treatment. Portions of the thinning units are outside of the RRWA boundary. However, they are within the same drainage within key winter range and will be beneficial to the animals using that drainage in the winter. These treatments would likely be implemented over a 3 year time period, beginning in the fall of 2010.

- Approximately 400 acres prescribed burning
- Approximately 300 acres slash thinning

2) Ungulate Mineral Supplements

Ungulate mortality as a result of collisions with vehicles is an ongoing issue on State Highway 97A, especially in the winter and early spring. Bighorn sheep and mule deer are repeatedly observed licking the road surface during the winter after application of de-icer on the roadway. We propose to coordinate with WDFW to develop a strategy to test a mineral supplement for wild ungulates. The supplement will be deployed (via helicopter) in locations within the winter range to decrease the need for these animals to go down to the highway in the winter.

3) Weed Control

Noxious weed management on ungulate winter range in the Rocky Reach Wildlife Area (specifically Swakane, Spencer and Tenas George drainages) is an ongoing effort by the USFS. Noxious weed control measures include application of herbicide or biocontrols, hand-pulling and seeding to discourage weed recolonization. Weed control is an essential mitigation to prescribed fire and enhances desired forage production. Weed control on winter range would benefit mule deer and bighorn sheep, as well as carnivores dependent on these ungulates, and other species dependent on shrub-steppe and grassland habitats.

4) Tenas George Washout Seeding

The Swakane Fire and subsequent weather events resulted in a mudslide that affected the main draw and side-channels in the Tenas George drainage in August 2010. The washout created patches of exposed soil and a subsequent noxious weed infestation in the RRWA. The area would benefit from reseeding to prevent further erosion and to mitigate the weeds. This work would include hand-pulling of noxious weeds and application of native grass seed within the affected areas of the Tenas George Drainage.

Contingency Planning

1) Accomplishing the projects listed above depends a great deal on environmental factors and funding. As such, we have included additional contingency projects in case factors, such as wildfire, weather, etc., prevent accomplishment of the above. Chelan PUD will assist the USFS to decommission roads closed by the USFS and/or thinning and prescribed burning within key mule deer winter range north of the Entiat (ie. near Osburn Canyon, Crum Canyon, etc.). If contingency measures are needed Chelan PUD will revise the plan for Commission approval.

⁵ Projects proposed do not require maintenance or monitoring to ensure success, rather, all projects are one-time treatments, or a series of activities. Therefore, none of these lands need be incorporated into the Rocky Reach Project boundary.

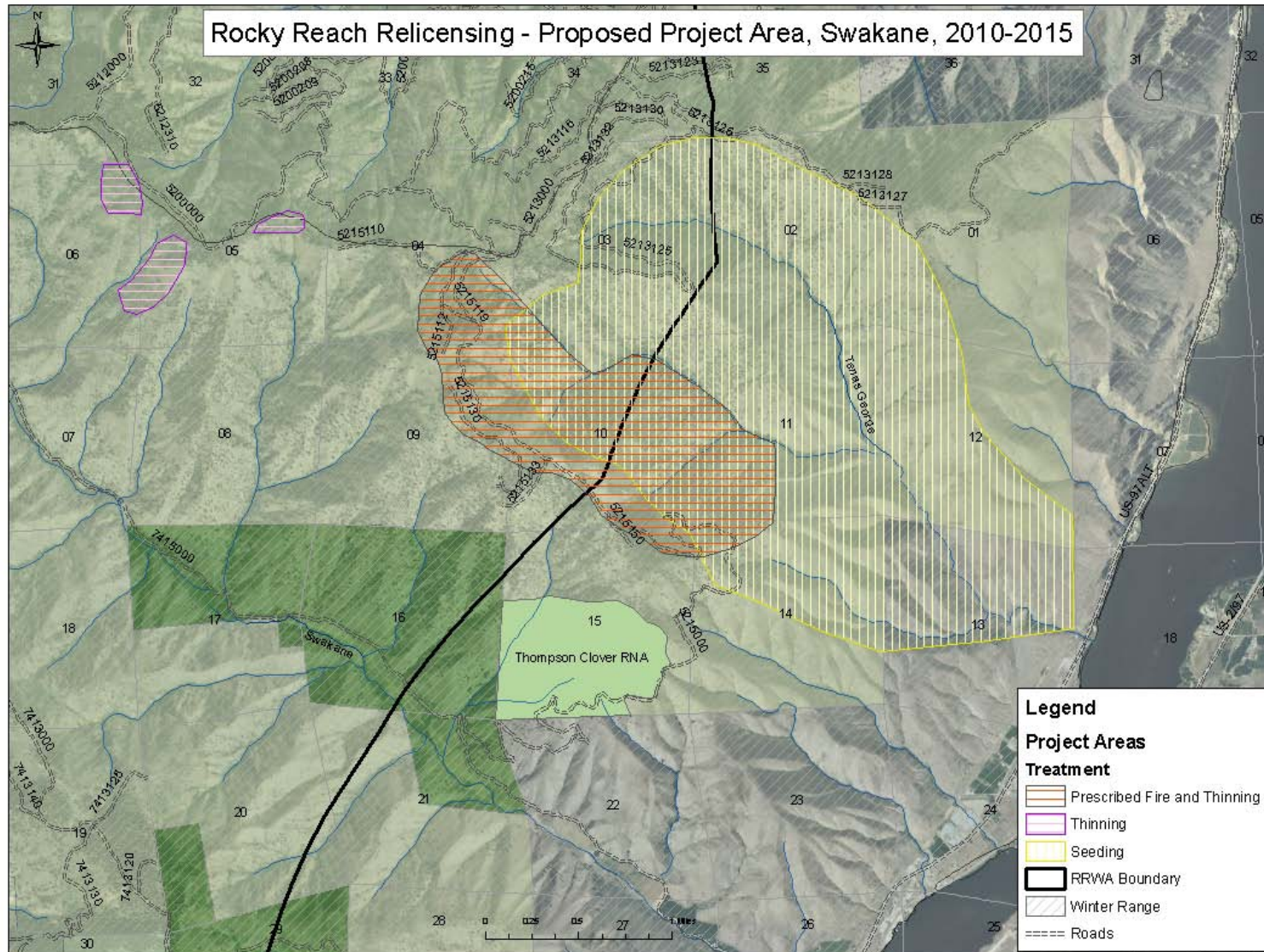


Figure 8: USFS Entiat Ranger District Habitat Improvement Projects, 2010-2015 (Revised March 16, 2012)