

**From:** [Osborn, Jeff](#)  
**To:** [Bitterman, Deborah](#)  
**Subject:** FW: 11/20/2104 Lake Chelan Fishery Forum meeting handouts  
**Date:** Friday, May 22, 2015 4:23:42 PM  
**Attachments:** [LCFF 2014 Handouts.docx](#)

---

#2

---

**From:** Anthony, Hugh [mailto:[hugh\\_anthony@nps.gov](mailto:hugh_anthony@nps.gov)]  
**Sent:** Wednesday, November 26, 2014 8:54 AM  
**To:** Osborn, Jeff  
**Subject:** Re: 11/20/2104 Lake Chelan Fishery Forum meeting handouts

Hi Jeff, see attached excel file for the NOCA handouts- Happy Thanksgiving!

On Tue, Nov 25, 2014 at 9:16 AM, Osborn, Jeff <[Jeff.Osborn@chelanpud.org](mailto:Jeff.Osborn@chelanpud.org)> wrote:  
Hugh: Will you please send me the two handouts you provided for the LCFF meeting on 11/20? I didn't keep a copy and would like to have them for the meeting record.

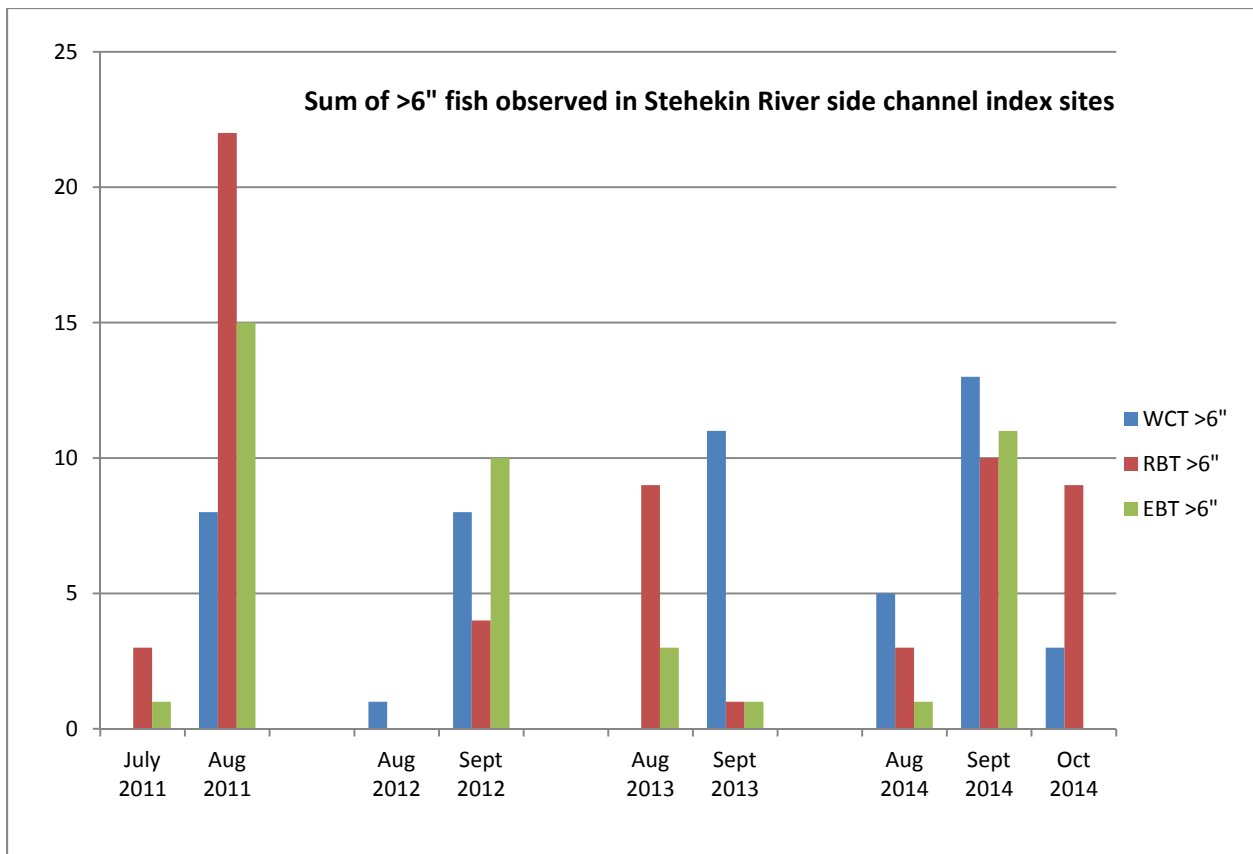
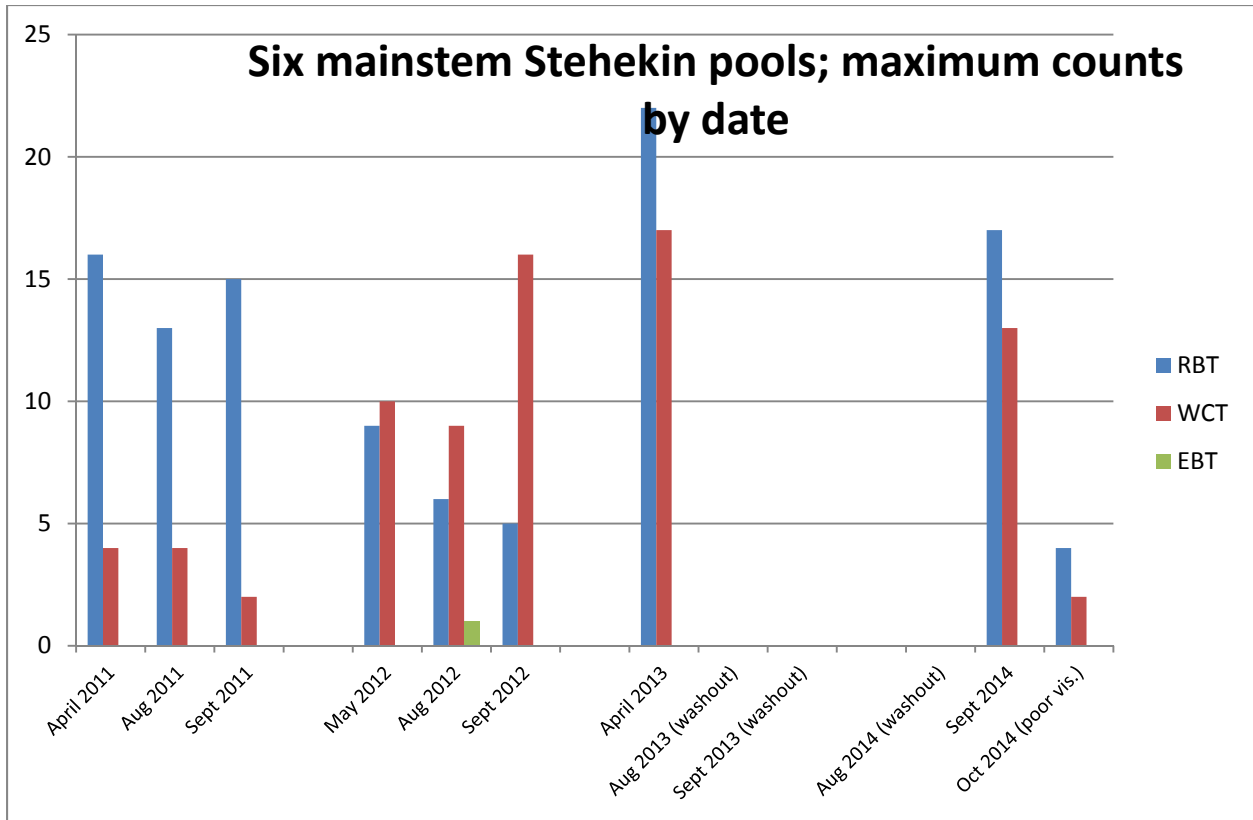
Thank you very much.

Jeff

**Jeff Osborn**  
**License Program Coordinator**  
**Natural Resources Programs**  
**Public Utility District No. 1 of Chelan County**  
**327 North Wenatchee Avenue**  
**PO Box 1231**  
**Wenatchee, WA 98807-1231**  
**Phone: 509-661-4176**  
**FAX: 509-661-8108**  
**Email: [jeff.osborn@chelanpud.org](mailto:jeff.osborn@chelanpud.org)**

--

Hugh Anthony  
Aquatic Ecologist  
North Cascades National Park  
(360) 854-7324 work  
(360) 333-8532 cell



Number of fish observed										
Survey Date	Site Name	Westslope Cutthroat Trout			Rainbow Trout			Kokanee		
		150-299mm	300-449mm	≥450m	150-299mm	300-449mm	≥450m	150-299mm	300-449mm	≥450m
8/20/2012	Harlequin Bridge	0	0	0	0	0	0	2	0	0
9/25/2012	Blackberry	0	0	0	0	0	0	97	0	0
4/25/2013	Harlequin Bridge	0	3	0	0	2	0	0	0	0
4/26/2013	Blackberry	0	0	0	0	2	1	0	0	0
9/18/2013	Harlequin Bridge	N/A <sup>1</sup>	N/A <sup>1</sup>	N/A <sup>1</sup>	N/A <sup>1</sup>	N/A <sup>1</sup>	N/A <sup>1</sup>	N/A <sup>1</sup>	N/A <sup>1</sup>	N/A <sup>1</sup>
9/18/2013	Blackberry	N/A <sup>1</sup>	N/A <sup>1</sup>	N/A <sup>1</sup>	N/A <sup>1</sup>	N/A <sup>1</sup>	N/A <sup>1</sup>	N/A <sup>1</sup>	N/A <sup>1</sup>	N/A <sup>1</sup>
9/16/2014	Harlequin Bridge	0	1	0	0	1	0	0	0	0
9/16/2014	Blackberry	0	0	0	1	0	0	0	0	0
10/8/2014	Harlequin Bridge	N/A <sup>1</sup>	N/A <sup>1</sup>	N/A <sup>1</sup>	N/A <sup>1</sup>	N/A <sup>1</sup>	N/A <sup>1</sup>	N/A <sup>1</sup>	N/A <sup>1</sup>	N/A <sup>1</sup>
10/8/2014	Blackberry	N/A <sup>1</sup>	N/A <sup>1</sup>	N/A <sup>1</sup>	N/A <sup>1</sup>	N/A <sup>1</sup>	N/A <sup>1</sup>	N/A <sup>1</sup>	N/A <sup>1</sup>	N/A <sup>1</sup>

1 - Due to high river turbidity surveys were not completed on these dates.