

South Lakeshore (Chelan) Fiber Expansion Project



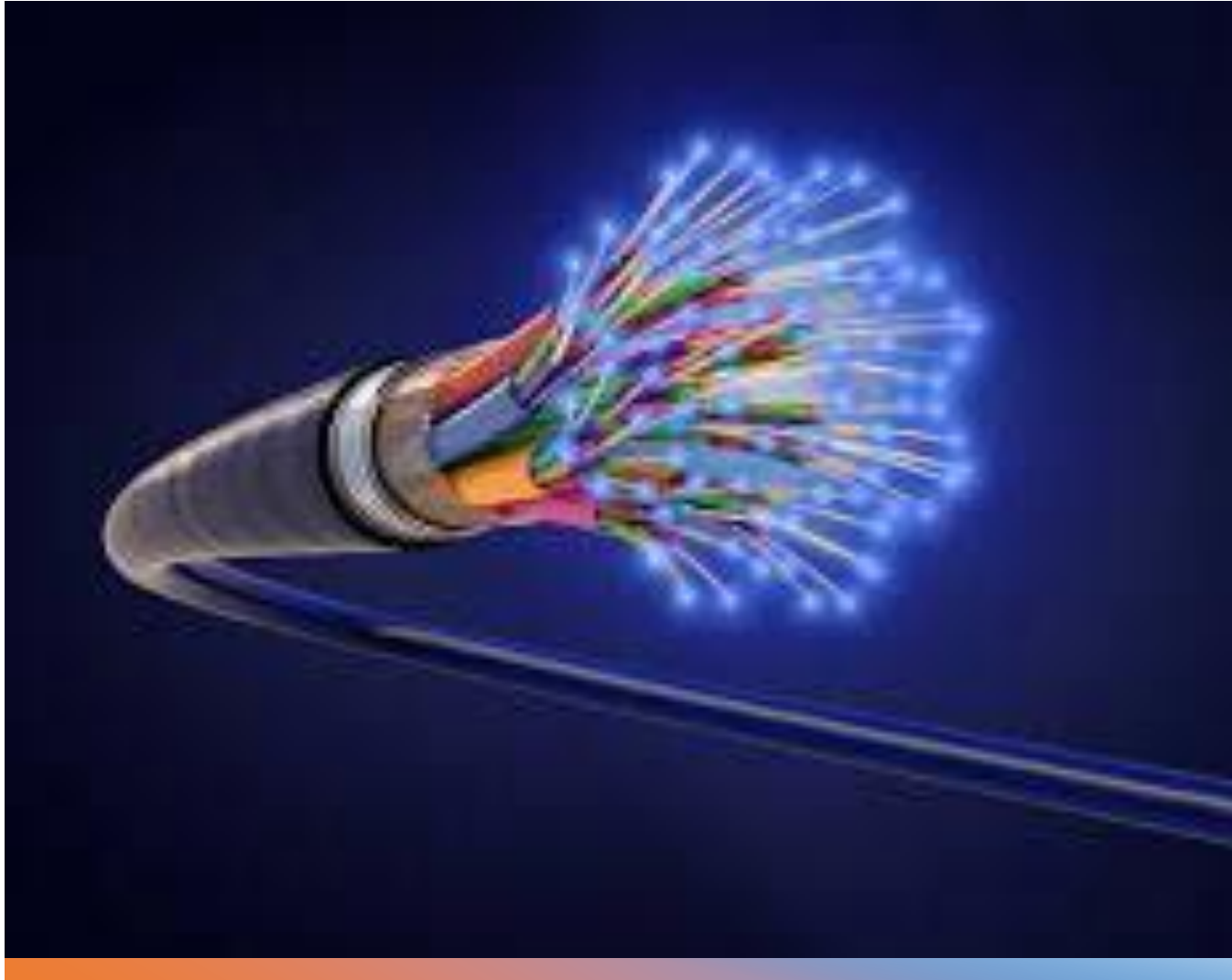
CHELAN COUNTY
POWER

www.chelanpud.org

What we'll cover today:

- Introduce the team
- Project overview and timeline
- Electrical upgrades overview
- Easement acquisition and permitting
- Fiber service overview

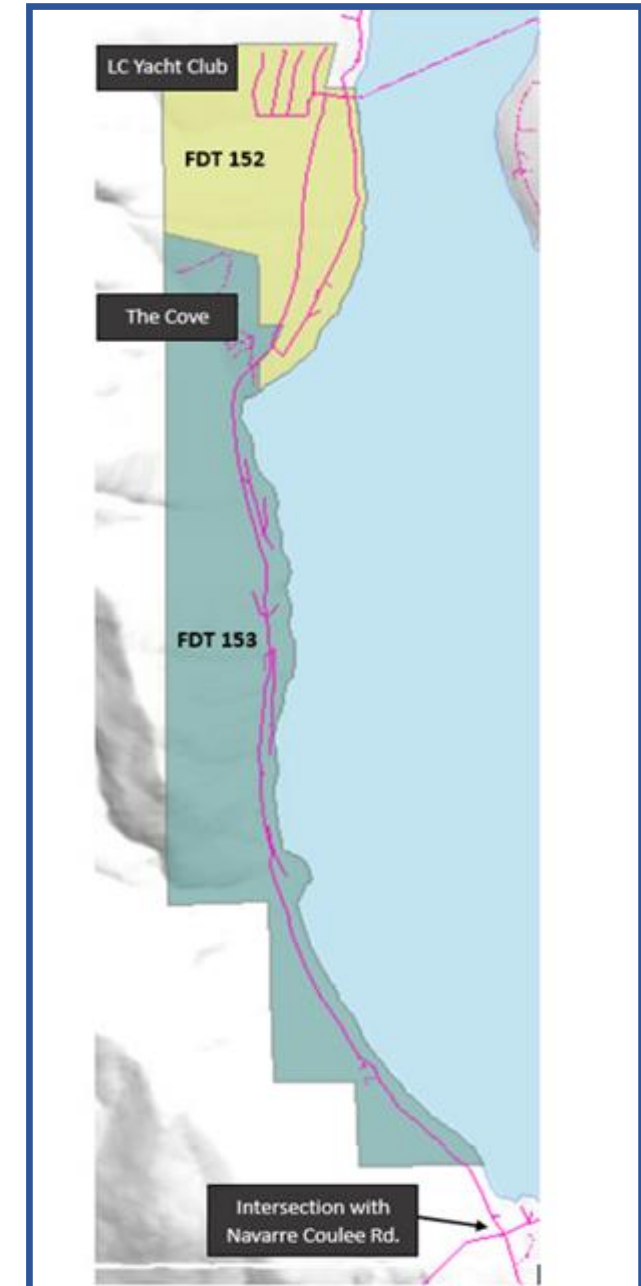
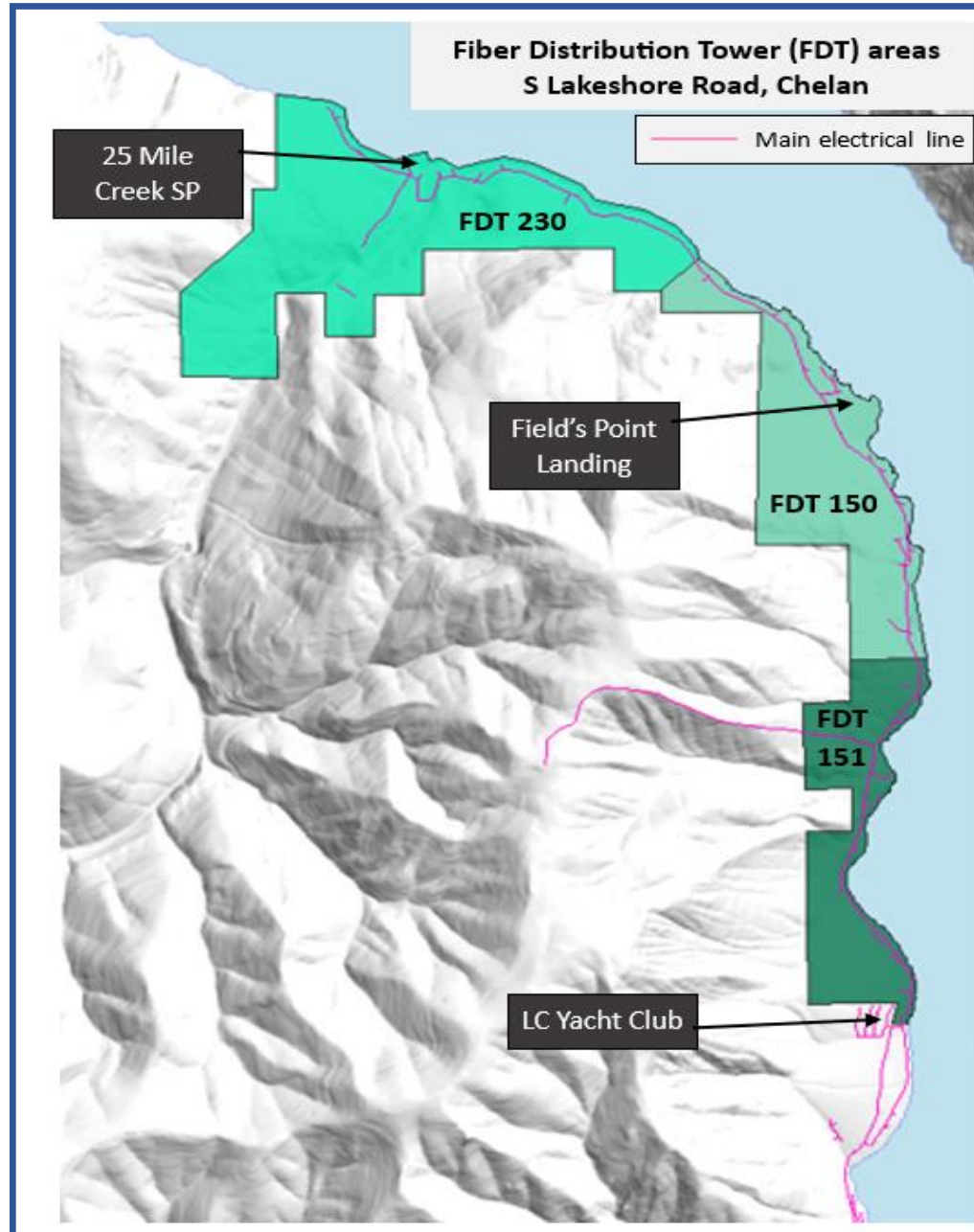




Chelan County PUD Fiber Expansion

- Current Fiber Expansion projects are being funded by the PUD's Public Power Benefit (PPB) program – chelanpud.org/PPB
- In 2022, about 80% of the county had access to fiber internet
- We continue to explore other areas for expansion, including the south lakeshore of Chelan

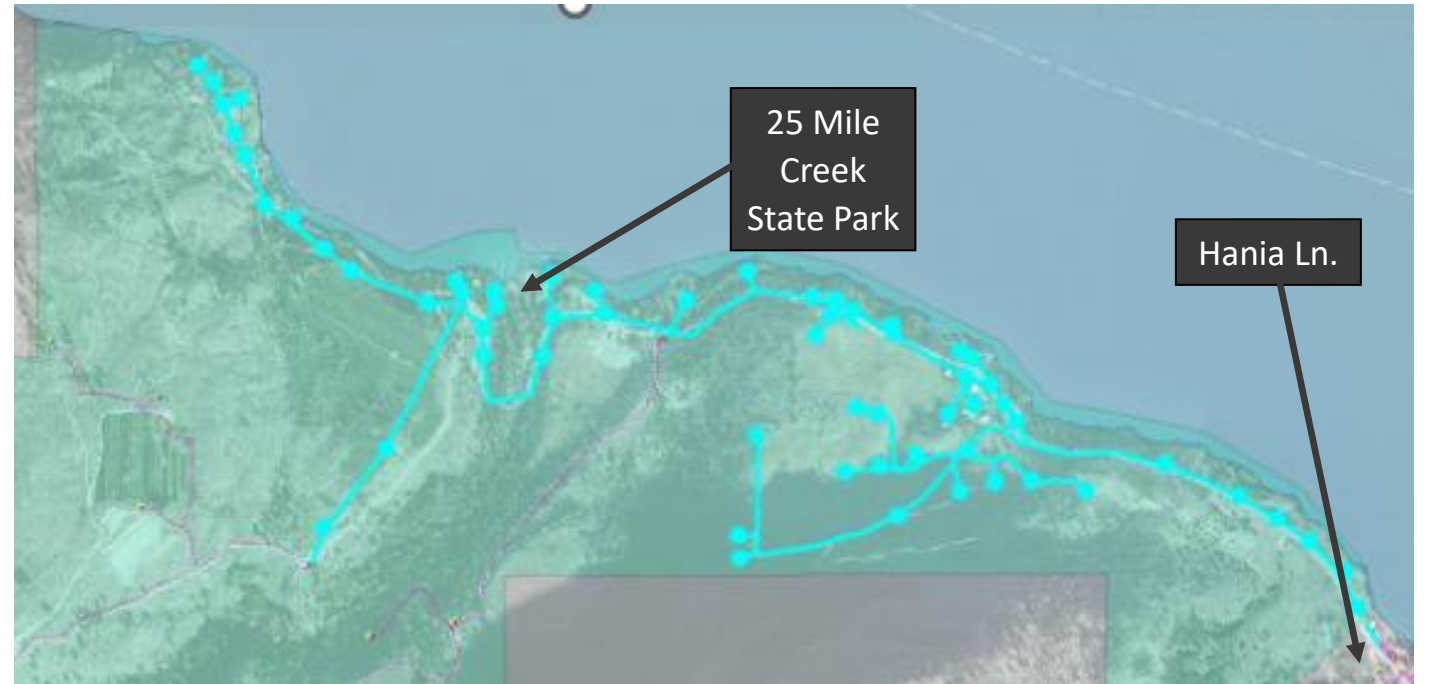
Fiber Distribution Tower (FDT) Service Areas



FDT-230 – Project Scope

The **scope of this project**, includes Fiber network expansion in these areas:

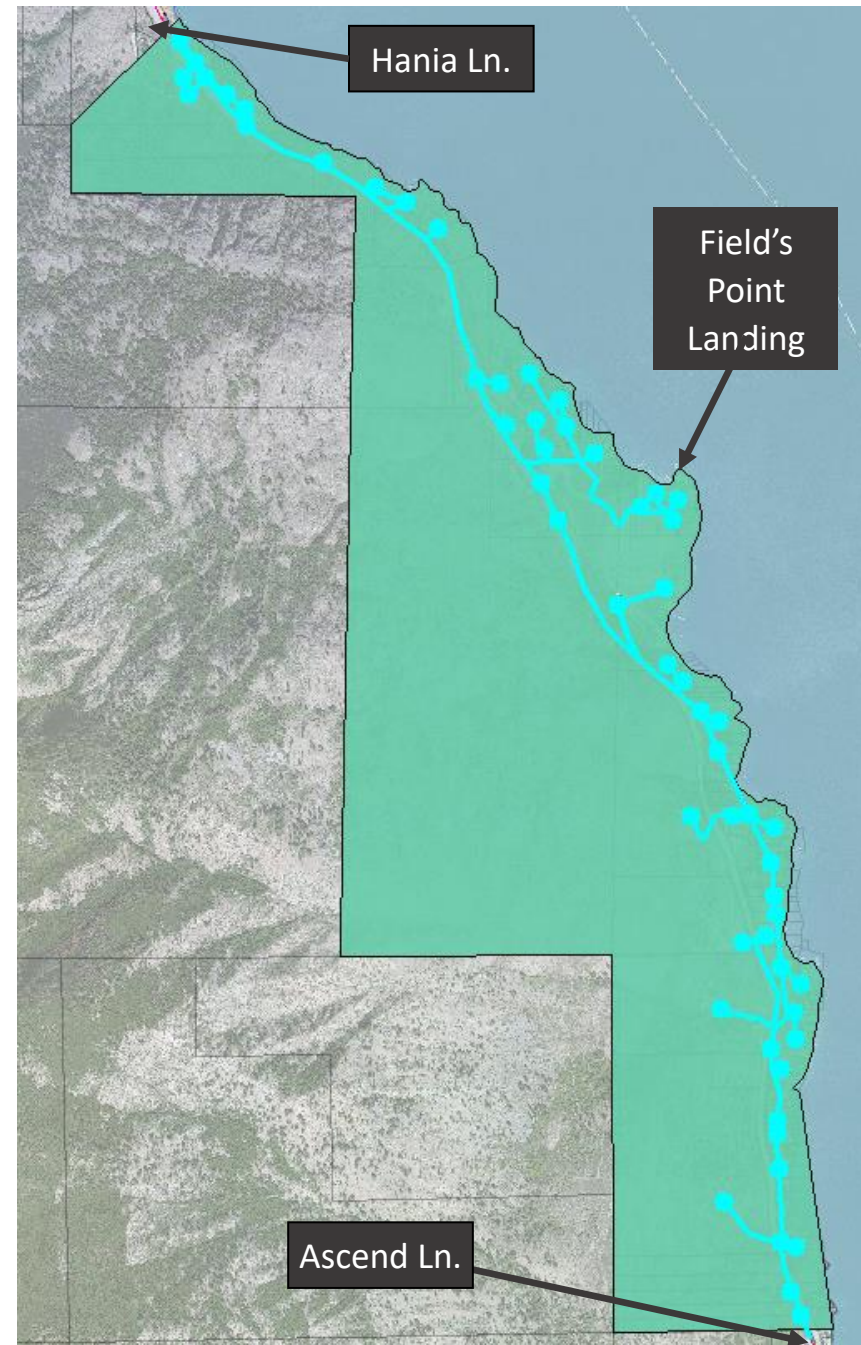
- Along S Lakeshore Rd.
- From Hania Ln. north to the end of the line
- About ½ mile up Shady Pass Rd.
- Excludes Hale Rd.



FDT-150 – Project Scope

The **scope of this project**, includes Fiber network expansion in these areas:

- Along S Lakeshore Rd.
- From Ascend Ln.
- North to Hania Ln.

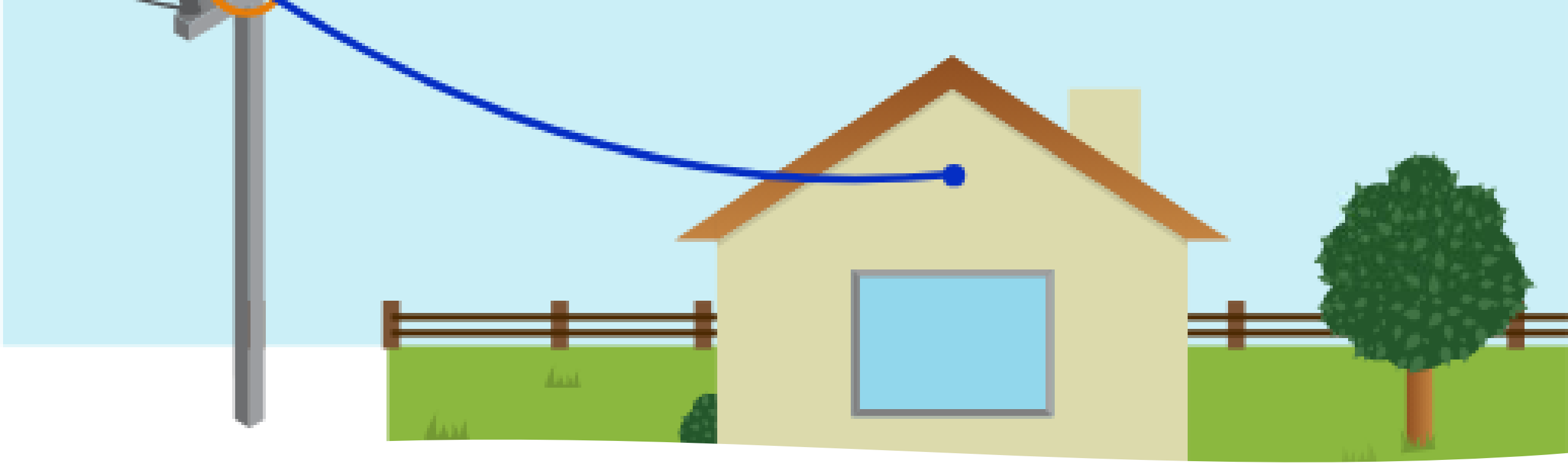


FDT-151 – Project Scope

The **scope of this project**, includes Fiber network expansion in these areas:

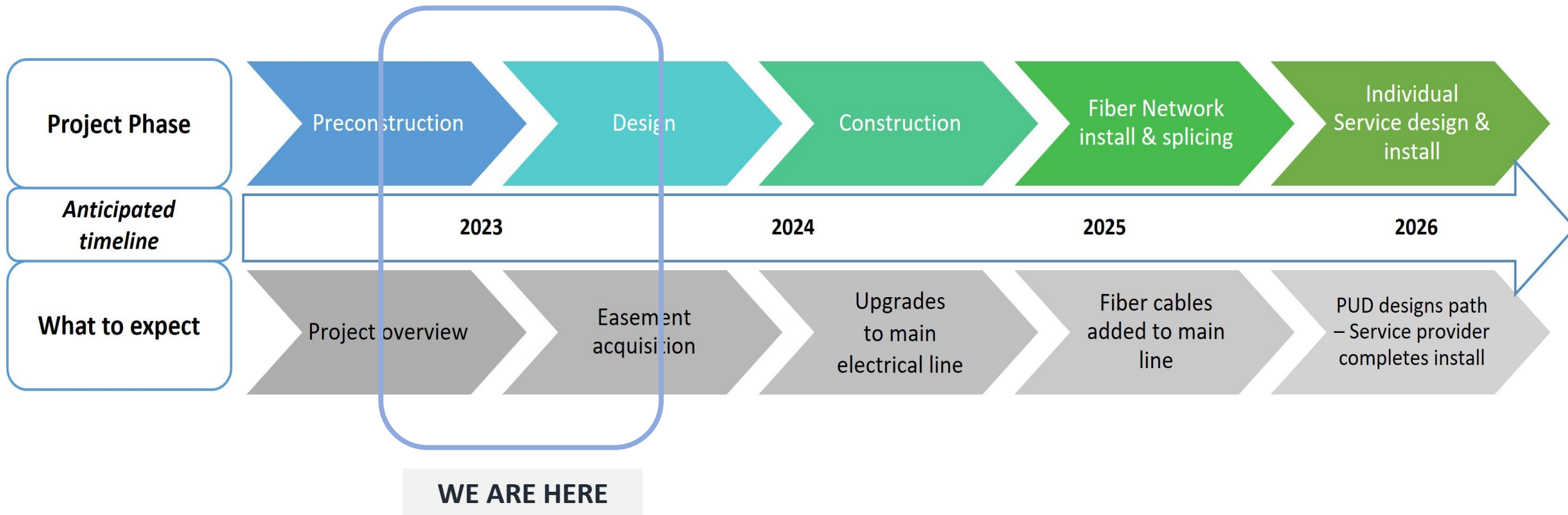
- Along S Lakeshore Rd.
- From north edge of LC Yacht Club
- North to Ascend Ln.
- Does not include LCYC – which is in FDT-152 (south)





- It takes a lot of planning and coordination to extend the fiber network and serve individual homes and businesses
- These projects are multi-phase and take multiple years
- We must first upgrade the electrical system before fiber cables can be added
- It will take some time between now and when fiber service will be connected

How does the PUD Expand the Fiber Network?



Preconstruction



Design



Construction

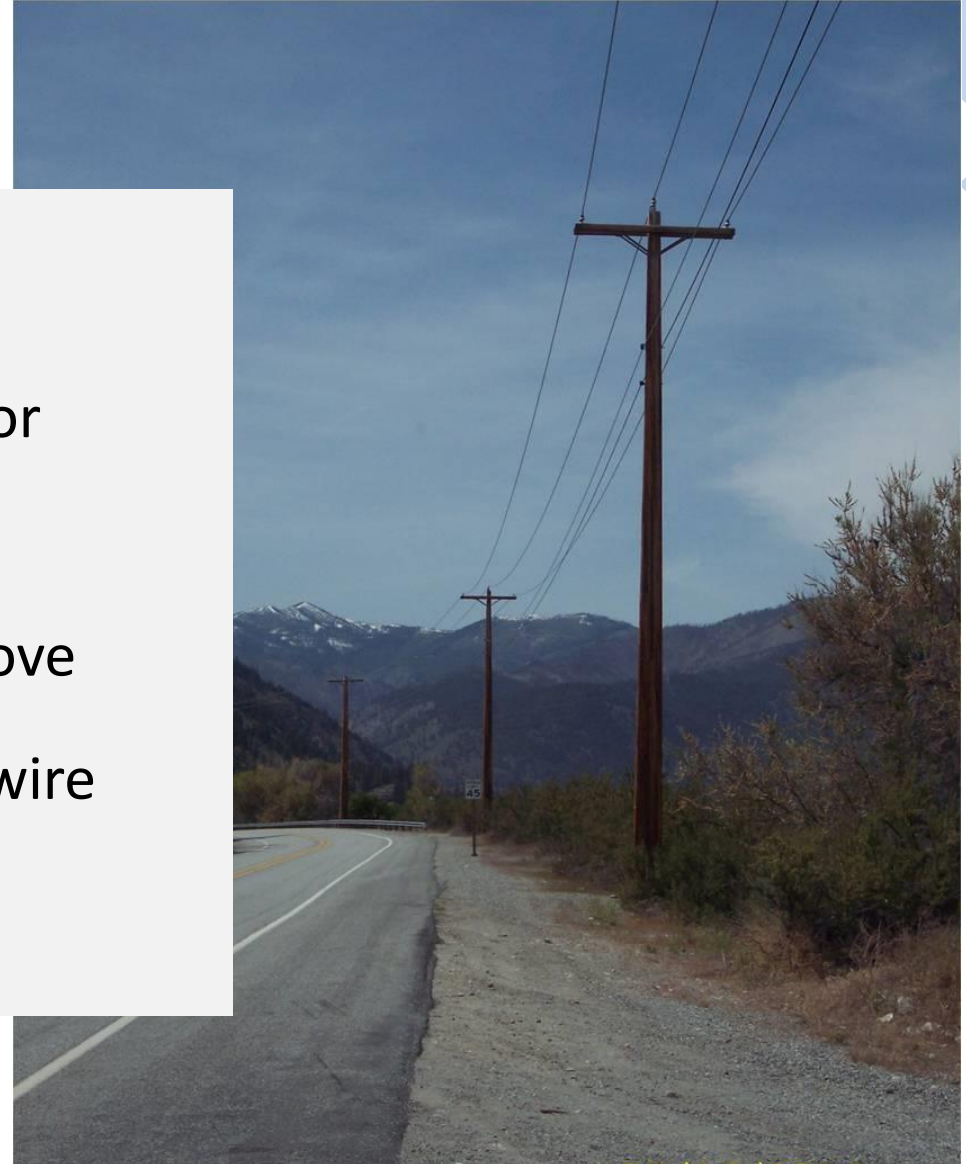


Fiber Network
install & splicing



Individual Service
design & install

- Evaluate poles
- Plan for adjustments or replacements
- Pole locations may move
- Poles may be taller & wire height may change



Preconstruction



Design



Construction



Fiber Network
install & splicing



Individual Service
design & install

- Design the route for the primary line
- Review property rights and **seek easements**
- Apply for permits



Preconstruction



Design



Construction

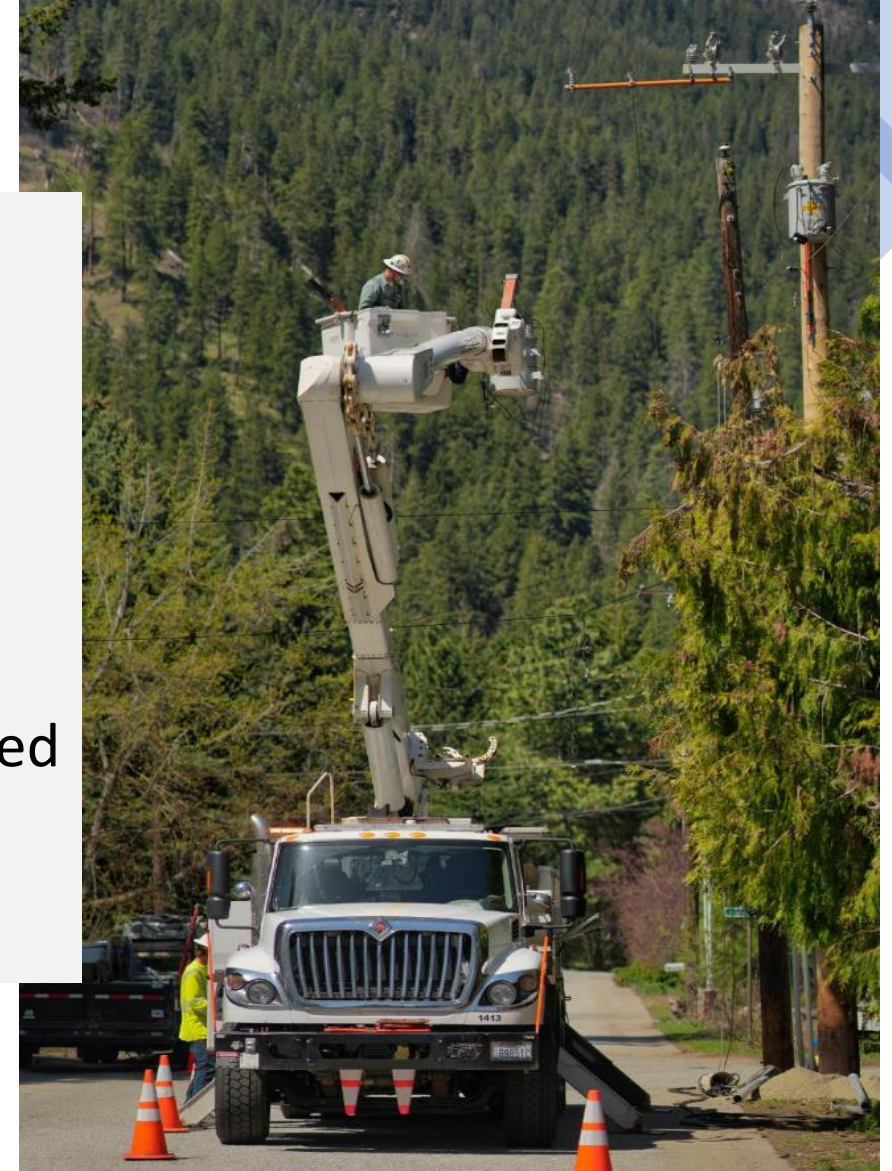


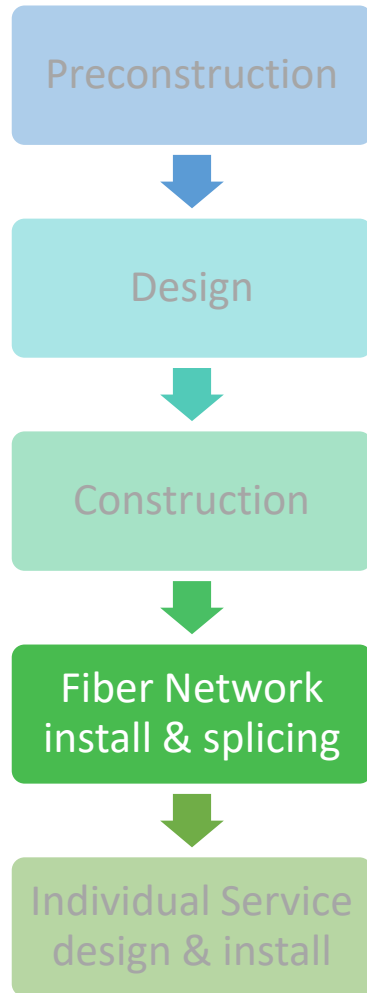
Fiber Network
install & splicing



Individual Service
design & install

- Upgrade the primary electrical line
- Replace or reframe poles
- Transfer wire
- Old poles will not be removed right away

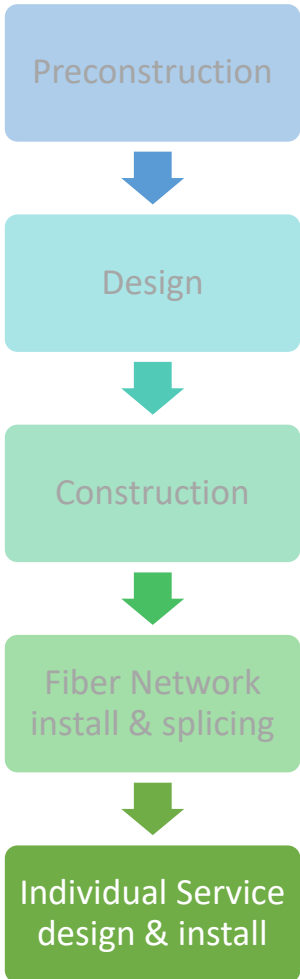




- Install main fiber-optic cables on the primary line
- Install service terminals in neighborhoods
- Splice main-line fiber cables together



Individual Fiber Service



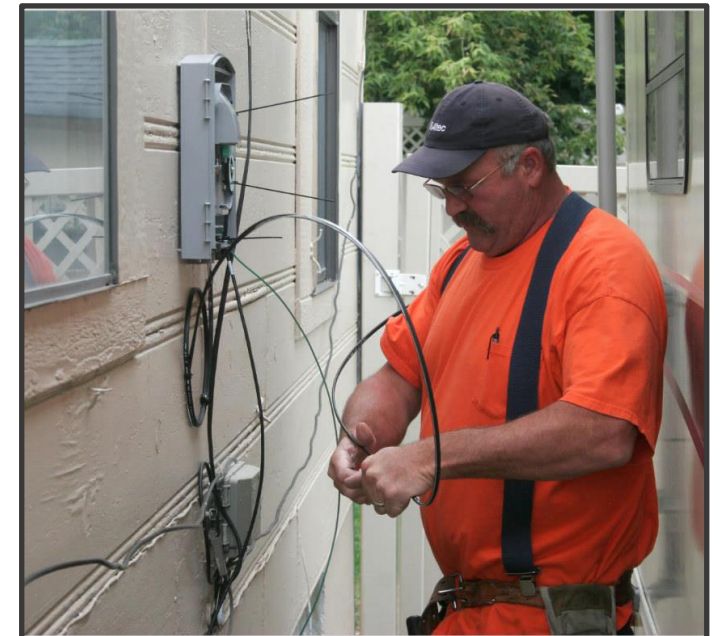
Design

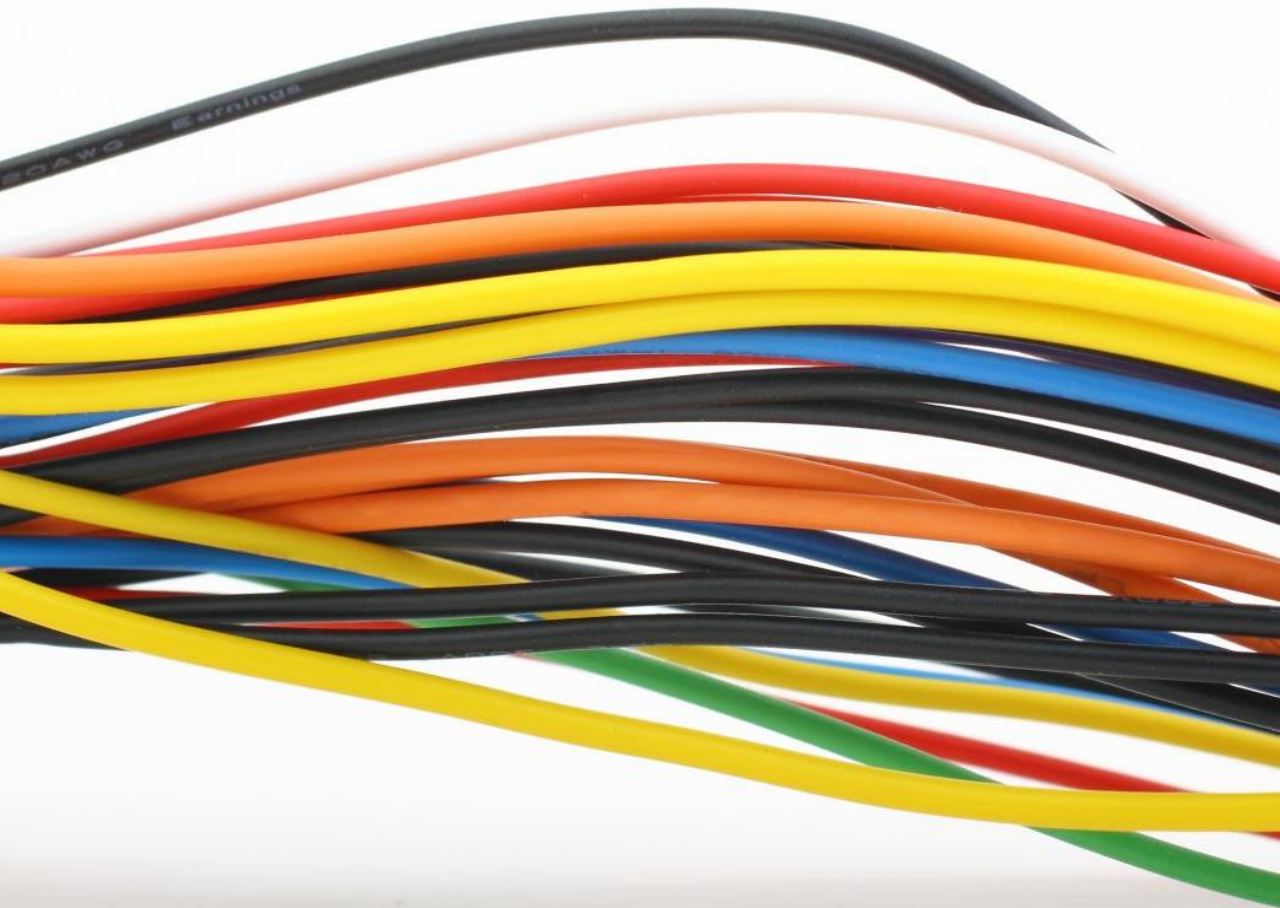
- Work is performed on the **secondary line**
 - *The secondary line connects individual services to the primary line*
 - Adjustments to the secondary line may be needed
-
- The PUD will receive orders directly from the service providers (chelanpud.org/Fiber)
 - PUD designs the path to extend fiber to homes and businesses



Install

- PUD extends the service line and attaches equipment
- Service provider will complete the remainder of the installation





Resources

- Fiber Department:
 - Chelanpud.org/Fiber
 - fiber@chelanpud.org
 - 509-661-4151
- General Questions:
 - Chelanpud.org/SLakeshoreFiber
 - customeroutreach@chelandpud.org
 - 509-661-8563

Questions?

